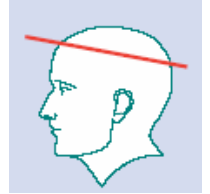
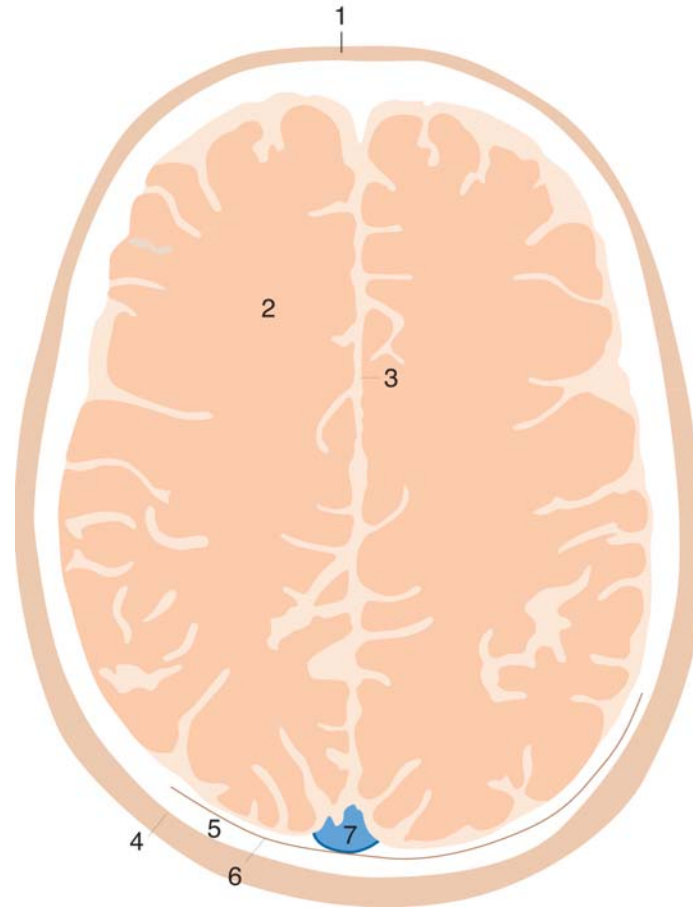
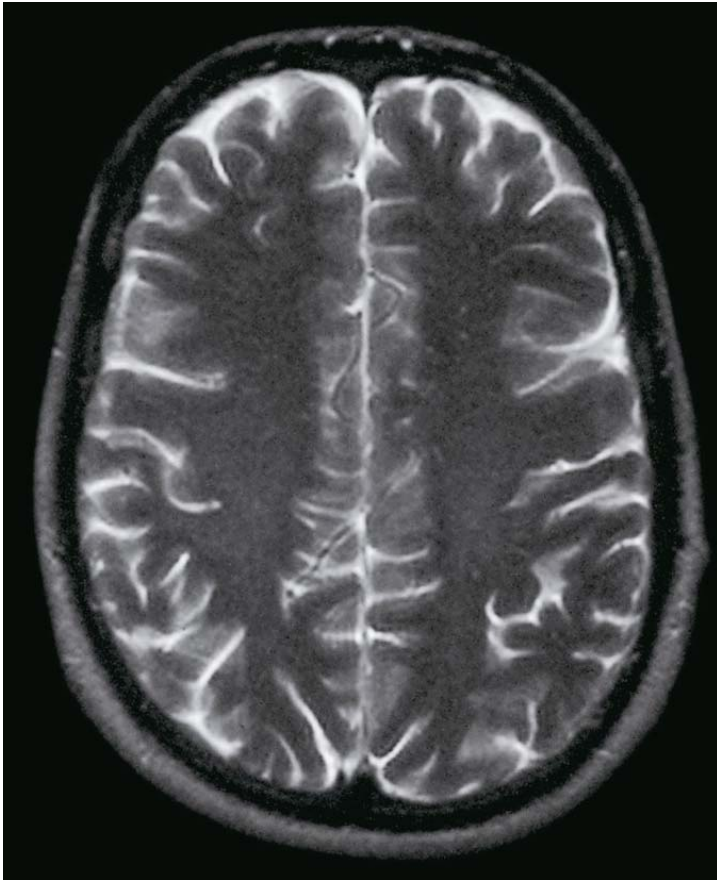




# Orvosi képző eljárások

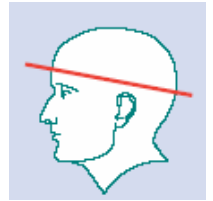
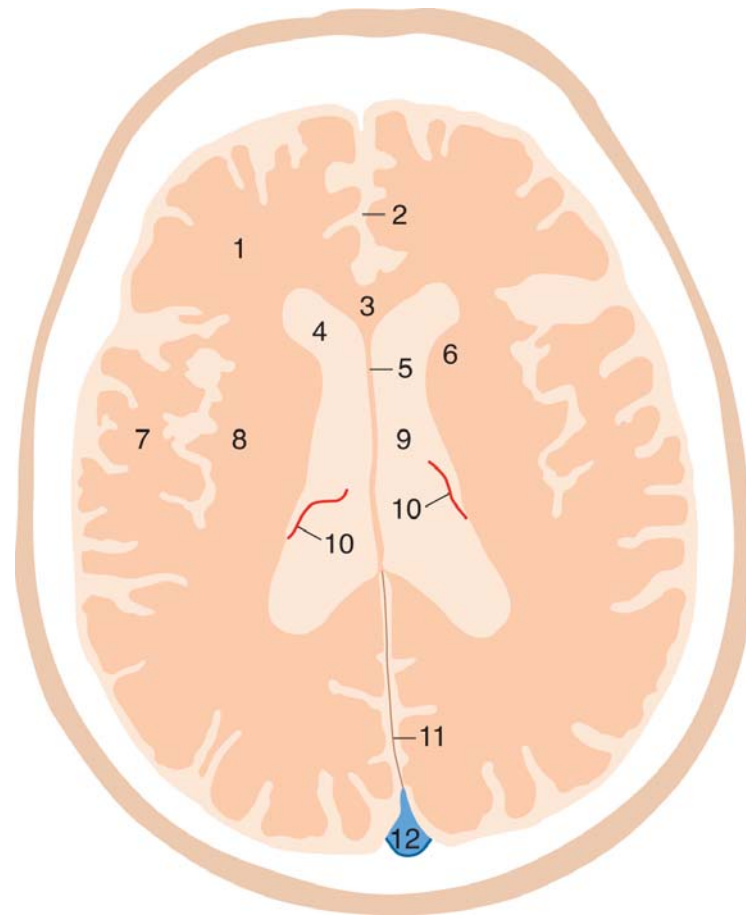
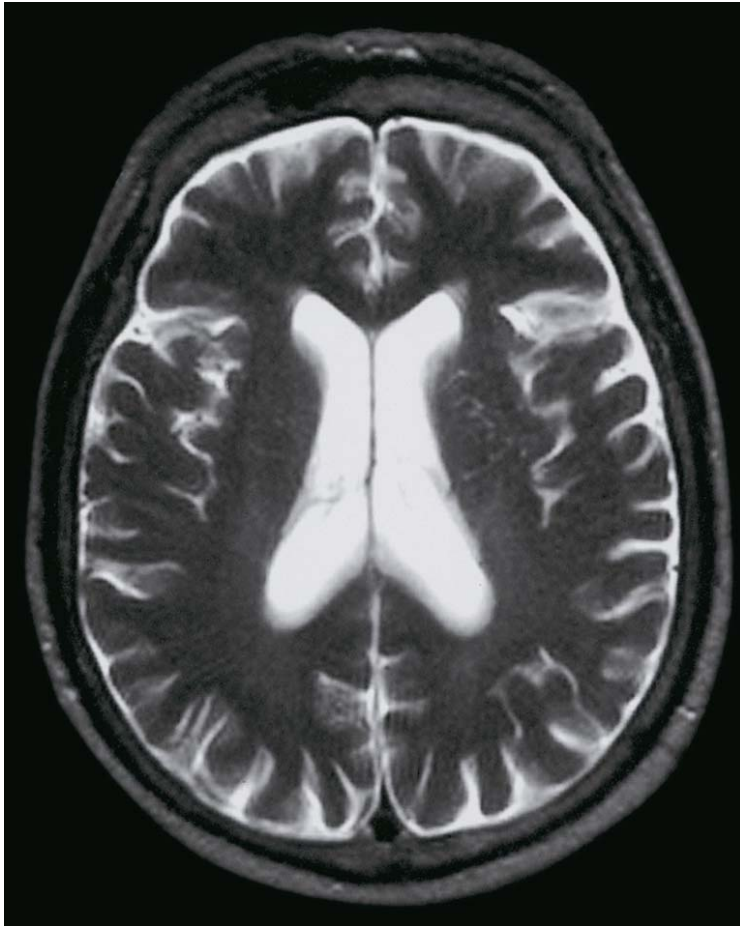
## Neurocranium

# Agy, T2 súlyozott axialis MRI felvétel / 1.



1. Galea aponeurotica
2. Centrum semiovale
3. Fissura longitudinalis cerebri
4. Tabula externa calvariae
5. Diploë
6. Tabula interna calvariae et dura mater
7. Sinus sagittalis sup.

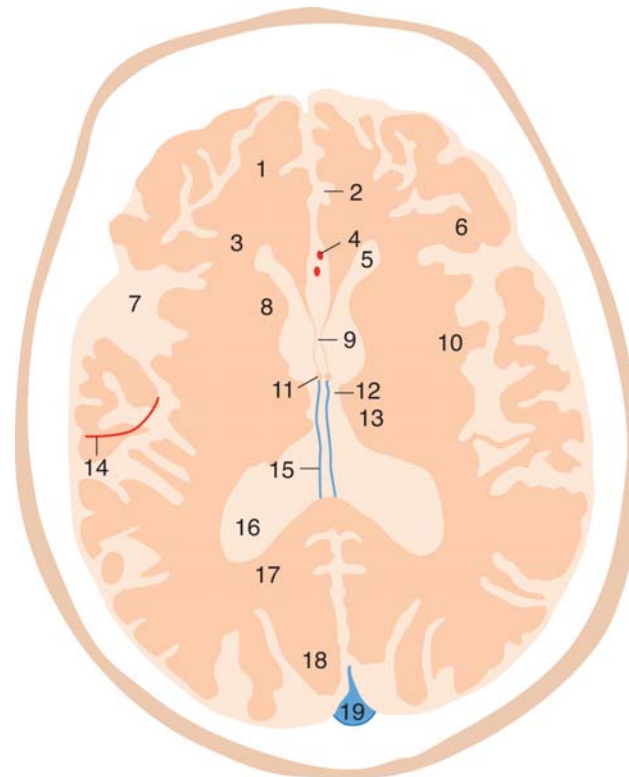
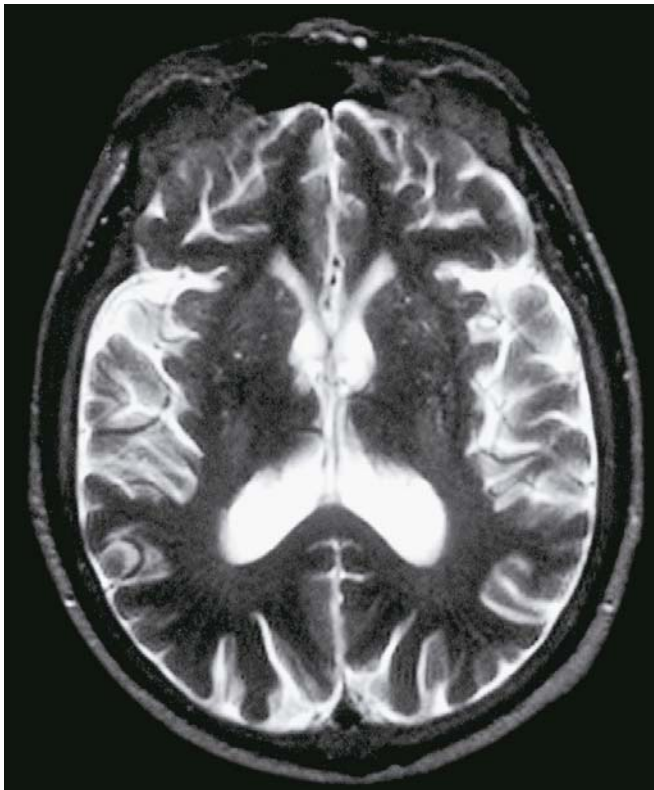
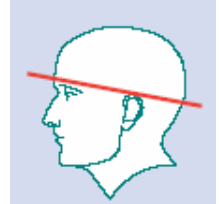
## Agy, T2 súlyozott axialis MRI felvétel / 2.



1. Lobus frontalis
2. Fissura longitudinalis cerebri
3. Genu corporis callosi
4. Ventriculus lateralis, cornu ant.
5. Septum pellucidum
6. Caput nuclei caudati

7. Operculum temporale
8. Insula
9. Ventriculus lateralis, pars centralis
10. Plexus choroideus
11. Falx cerebri
12. Sinus sagittalis sup.

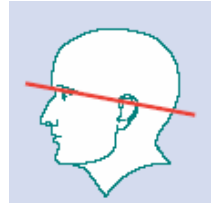
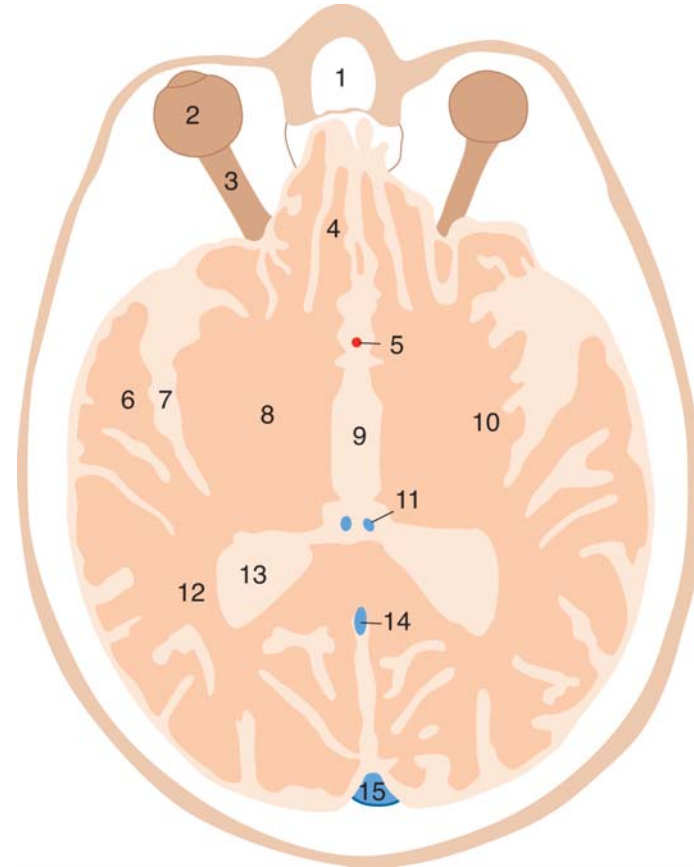
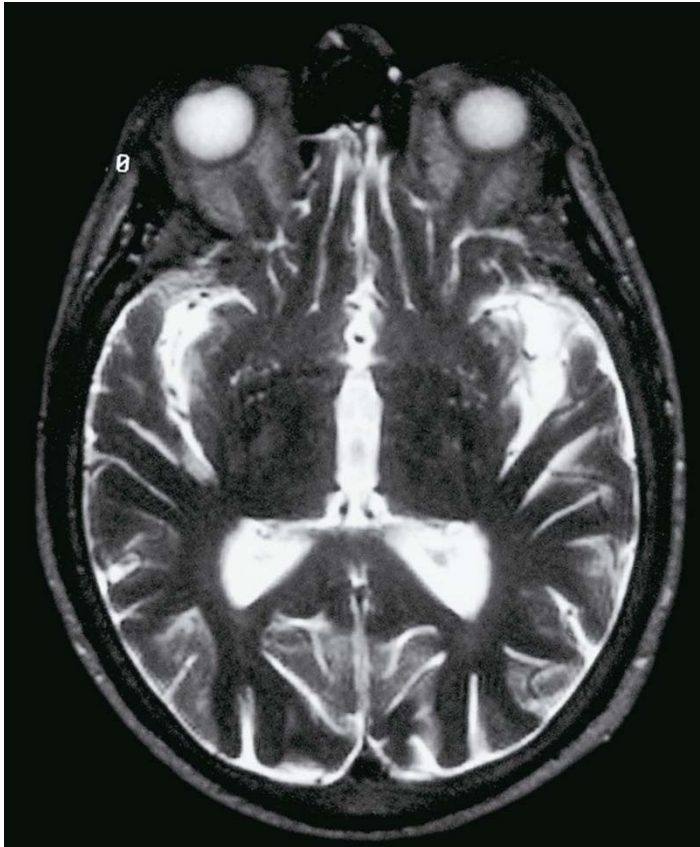
## Agy, T2 súlyozott axialis MRI felvétel / 3.



1. Gyri orbitales
2. Fissura longitudinalis cerebri et falx cerebri
3. Forceps minor
4. A. cerebri ant.
5. Ventriculus lat., cornu ant.
6. Operculum frontale
7. Fossa lateralis
8. Caput nuclei caudati
9. Septum pellucidum

10. Gyri insulares
11. Fornix
12. Foramen interventriculare
13. Thalamus
14. A. cerebri media
15. V. cerebri interna
16. Ventriculus lat.
17. Forceps maior
18. Lobus occipitalis
19. Sinus sagittalis sup.

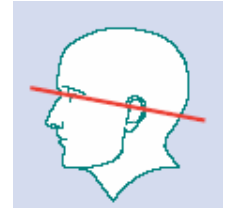
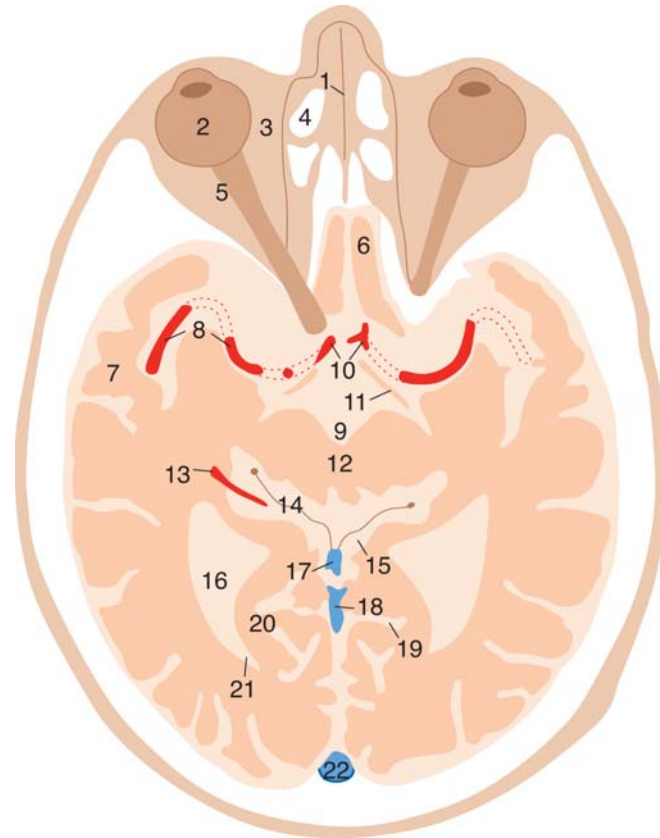
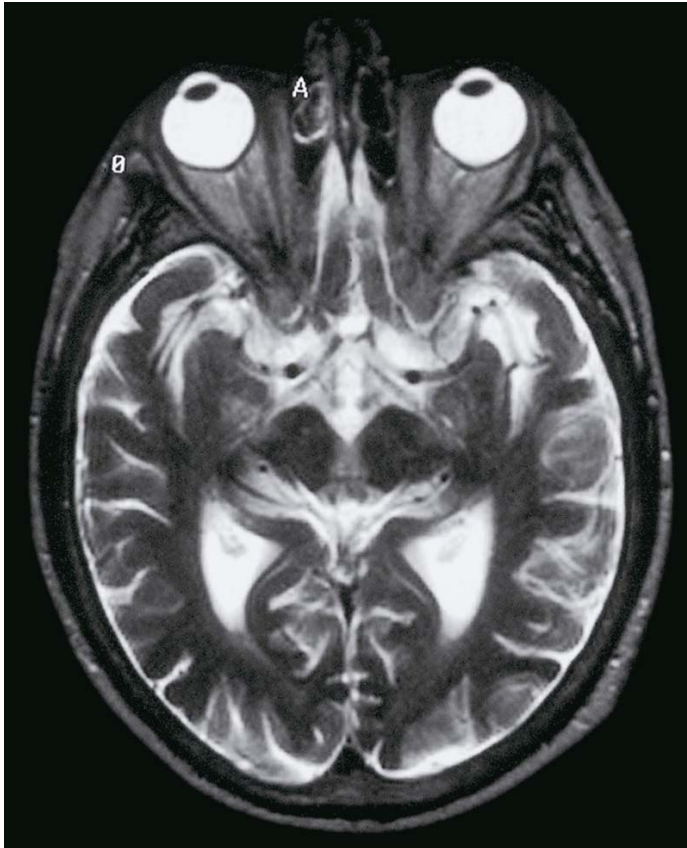
## Agy, T2 súlyozott axialis MRI felvétel / 4.



1. Cavum nasi
2. Bulbus oculi
3. Nervus opticus
4. Gyrus rectus
5. A. cerebri ant.
6. Operculum temporale
7. Sulcus lateralis
8. Thalamus

9. Ventriculus tertius
10. Gyri insulares
11. V. cerebri interna
12. Forceps maior
13. Trigonum collaterale (cornu post.)
14. Sinus rectus
15. Sinus sagittalis sup.

# Agy, T2 súlyozott axialis MRI felvétel / 5.

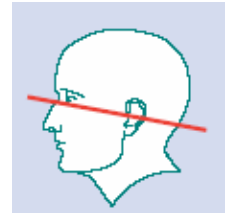
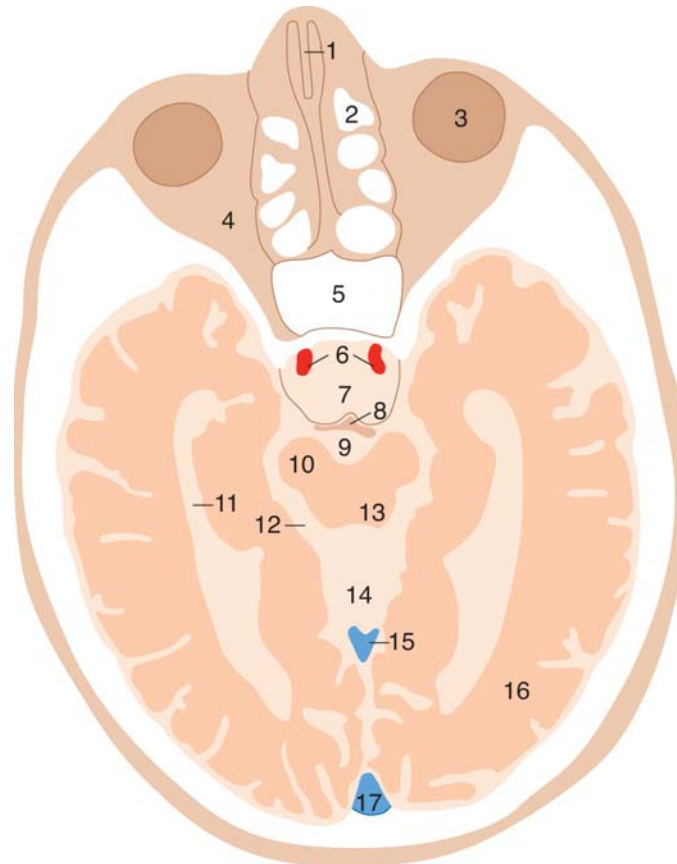


1. Septum nasi
2. Bulbus oculi
3. Orbita
4. Cellulae ethmoidales
5. Nervus opticus
6. Gyrus rectus
7. Lobus temporalis
8. A. cerebri med.

9. Fossa et cisterna interpeduncularis
10. A. cerebri ant.
11. Tractus opticus
12. Mesencephalon
13. A. cerebri post.
14. Cisterna ambiens
15. Cisterna venae magnae
16. Trigonum collaterale (cornu post.)

17. V. cerebri magna (Galenii)
18. Sinus rectus
19. Fissura calcarina
20. Calcar avis
21. Ventriculus lateralis, cornu posterius
22. Sinus sagittalis sup.

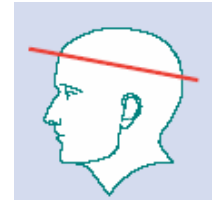
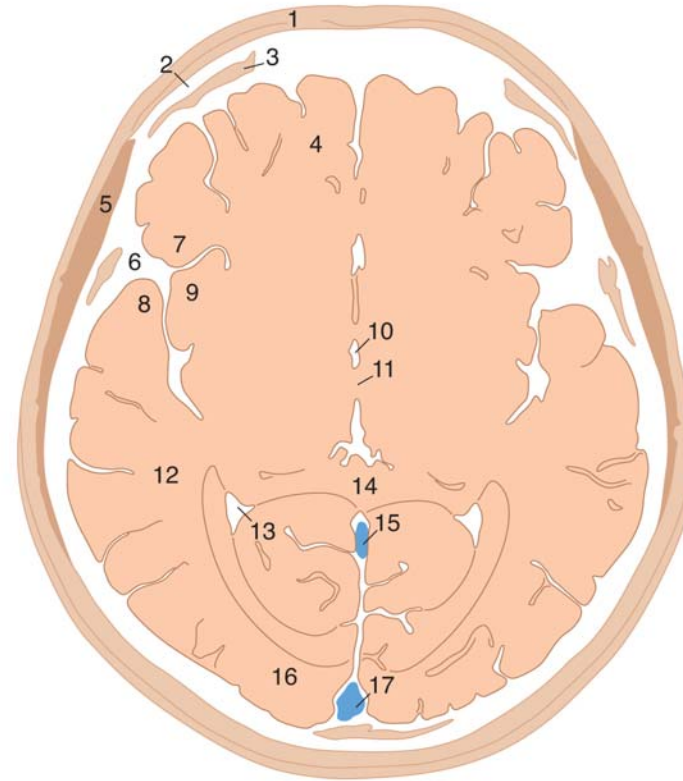
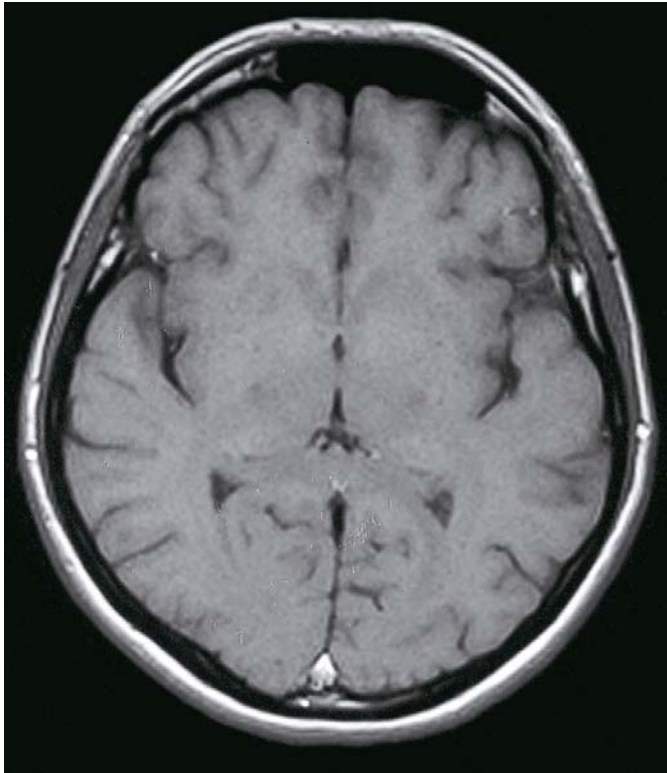
## Agy, T2 súlyozott axialis MRI felvétel / 6.



1. Septum nasi
2. Cellulae ethmoidales
3. Bulbus oculi
4. Orbita
5. Sinus sphenoidalis
6. A. carotis int.
7. Cisterna suprasellaris et infundibulum
8. Dorsum sellae
9. Fossa et cisterna interpeduncularis

10. Crus cerebri
11. Ventriculus lat., cornu inf.
12. Cisterna ambiens
13. Tectum mesencephali
14. Cisterna venae magnae
15. V. cerebri magna (Galeni)
16. Radiatio optica
17. Sinus sagittalis sup.

# Agy, T1 súlyozott axialis MRI felvétel / 1.

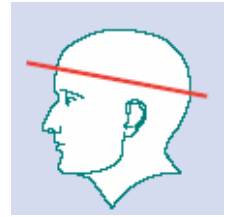
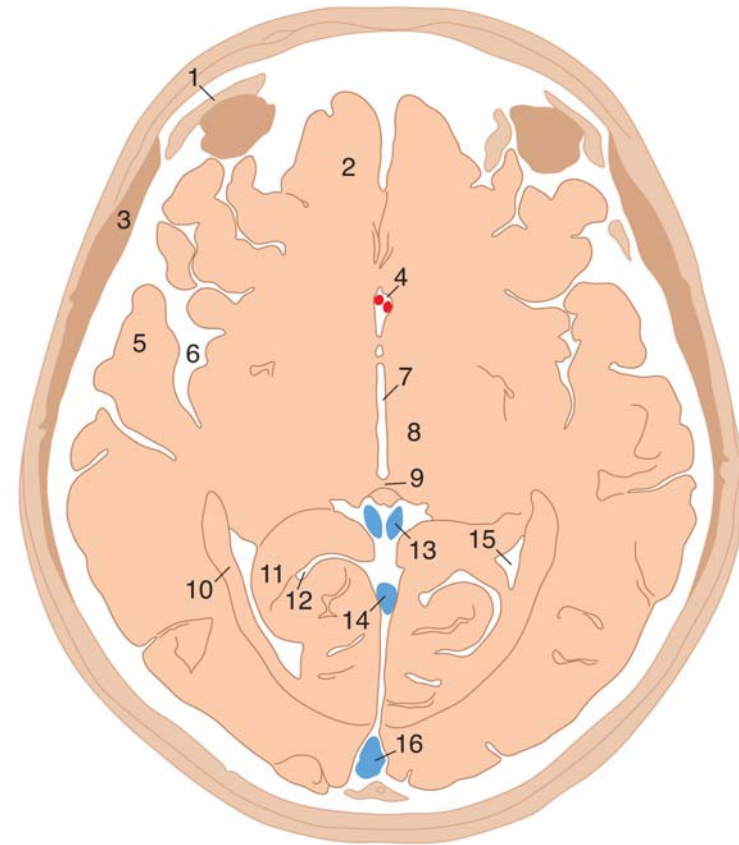
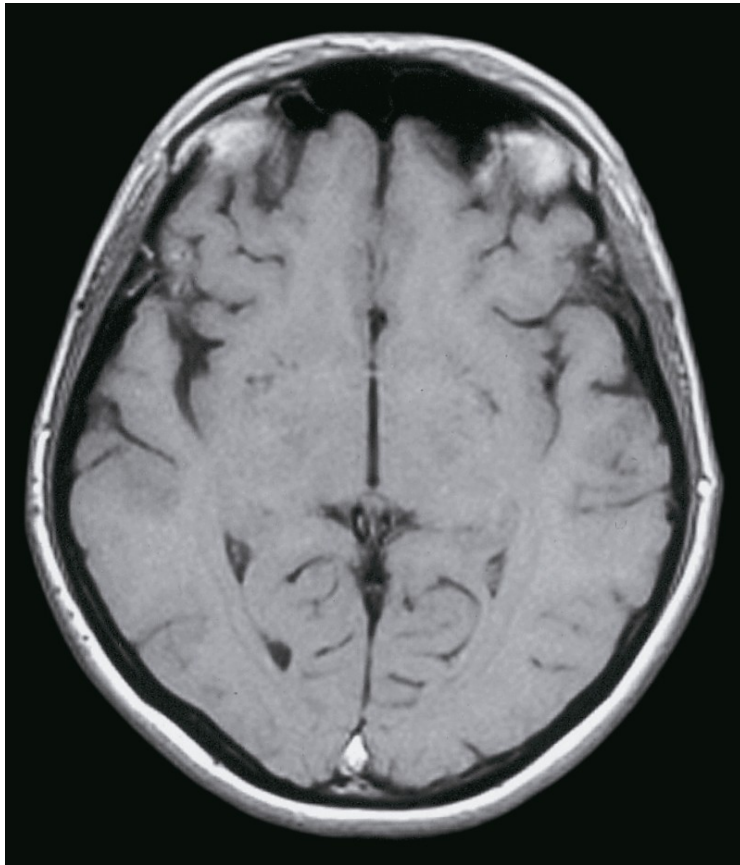


1. Galea aponeurotica
2. Tabula externa calvariae
3. Diploë
4. Lobus frontalis
5. M. temporalis
6. Fissura lateralis (Sylvii)
7. Operculum frontale
8. Operculum temporale
9. Insula

10. Ventriculus tertius
11. Adhaesio interthalamica
12. Lobus temporalis
13. Trigonum collaterale
14. Splenium corporis callosi
15. Sinus sagittalis inf. et sinus rectus
16. Lobus occipitalis
17. Sinus sagittalis sup.



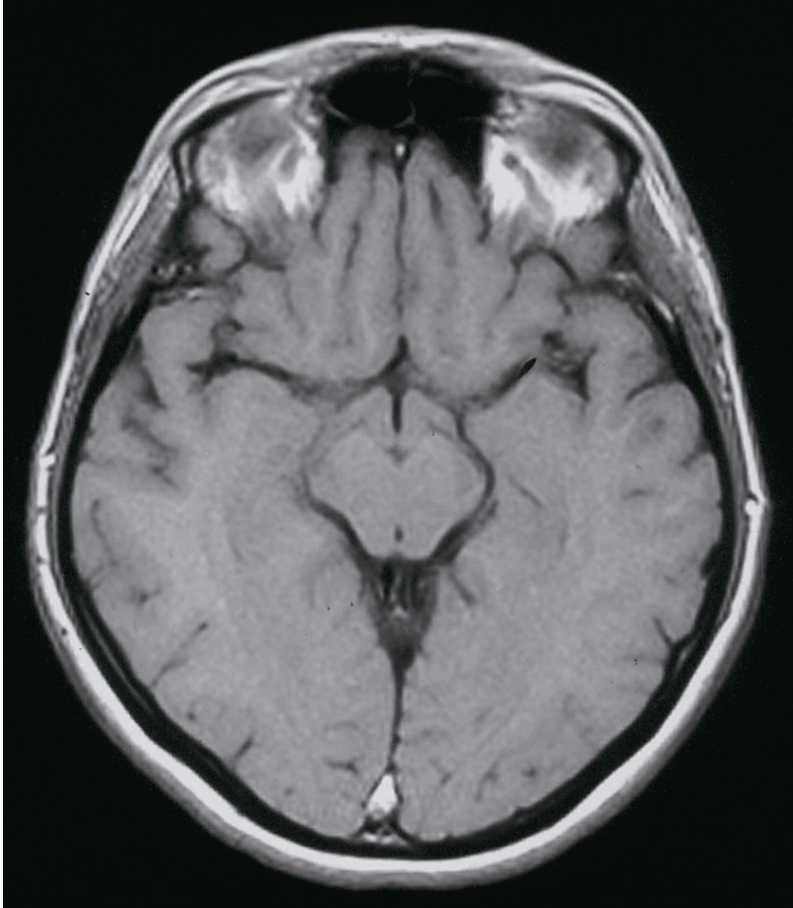
## Agy, T1 súlyozott axialis MRI felvétel / 2.



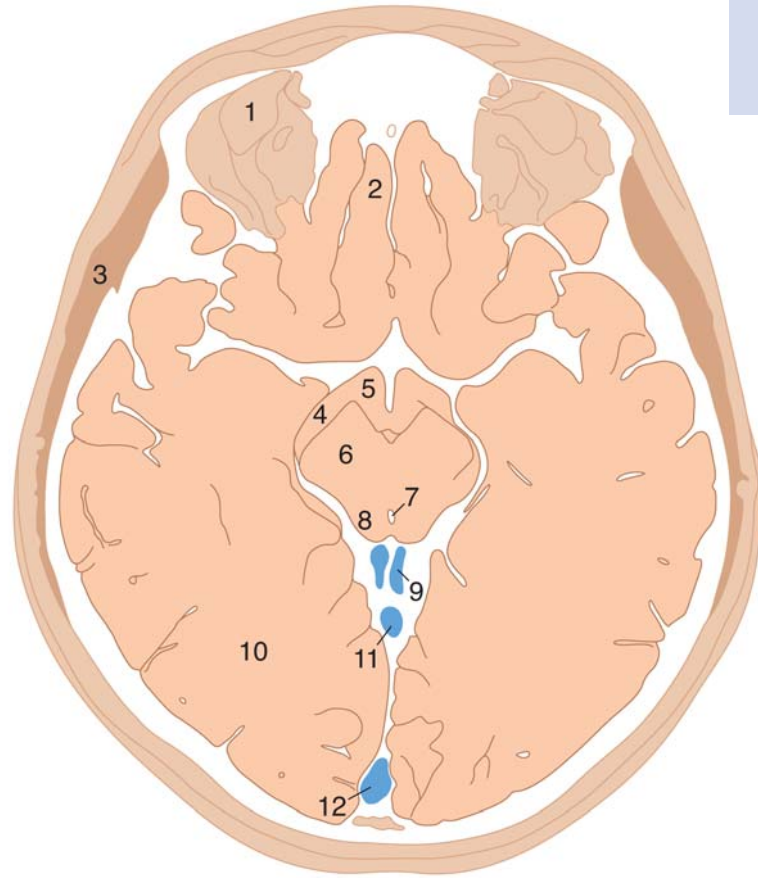
1. Orbita
2. Lobus frontalis
3. M. temporalis
4. A. cerebri ant.
5. Operculum temporale
6. Fissura lat. (Sylvii)
7. Ventriculus tertius
8. Hypothalamus

9. Commissura post.
10. Radiatio optica (Gratiolet)
11. Calcar avis
12. Fissura calcarina
13. V. cerebri int.
14. Sinus rectus
15. Trigonum collaterale
16. Sinus sagittalis sup.

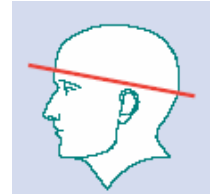
# Agy, T1 súlyozott axialis MRI felvétel / 3.



- 1. Orbita
- 2. Gyrus rectus
- 3. M. temporalis
- 4. Tractus opticus
- 5. Hypothalamus
- 6. Crus cerebri

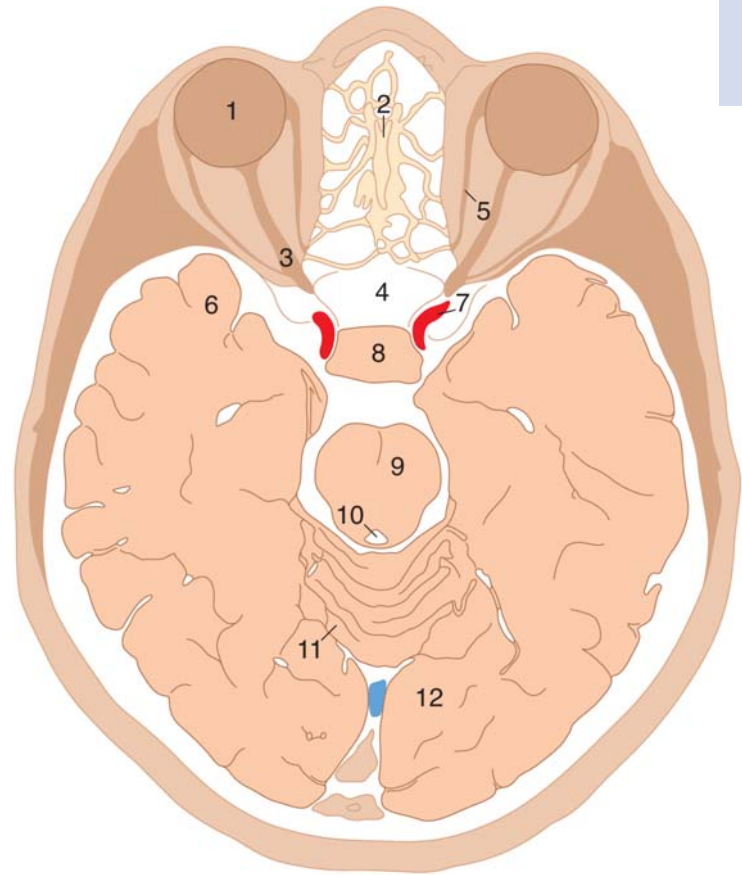
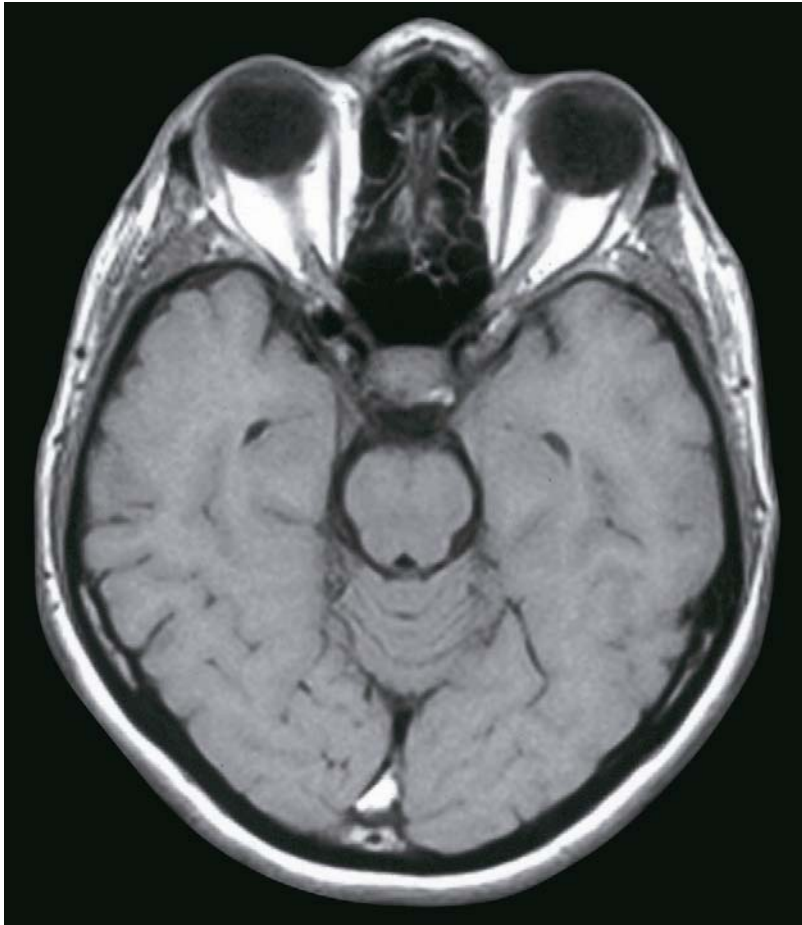
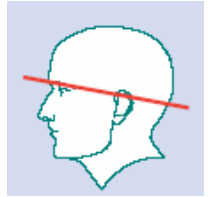


- 7. Aquaeductus cerebri
- 8. Colliculus sup.
- 9. V. cerebri int.
- 10. Lobus occipitalis
- 11. Sinus rectus
- 12. Sinus sagittalis sup.





# Agy, T1 súlyozott axialis MRI felvétel / 5.



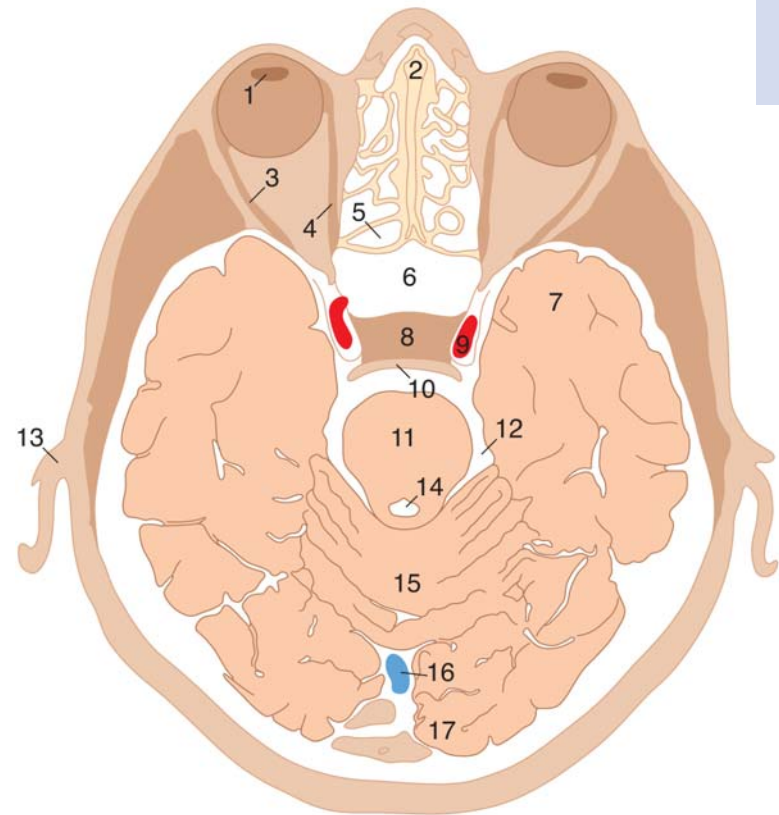
1. Bulbus oculi
2. Cavum nasi
3. N. opticus
4. Sinus sphenoidalis
5. M. rectus med.
6. Lobus temporalis

7. A. ophthalmica
8. Sella turcica
9. Pons
10. Ventriculus quartus
11. Vermis cerebelli
12. Lobus occipitalis

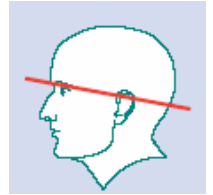
# Agy, T1 súlyozott axialis MRI felvétel / 6.



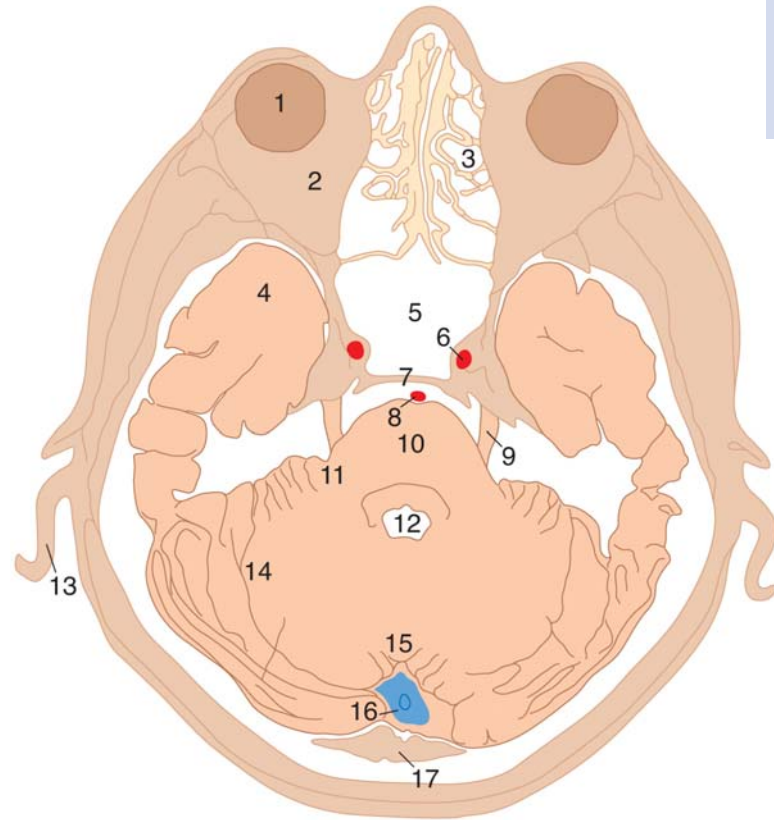
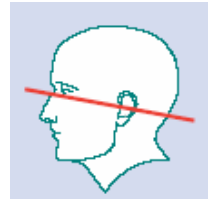
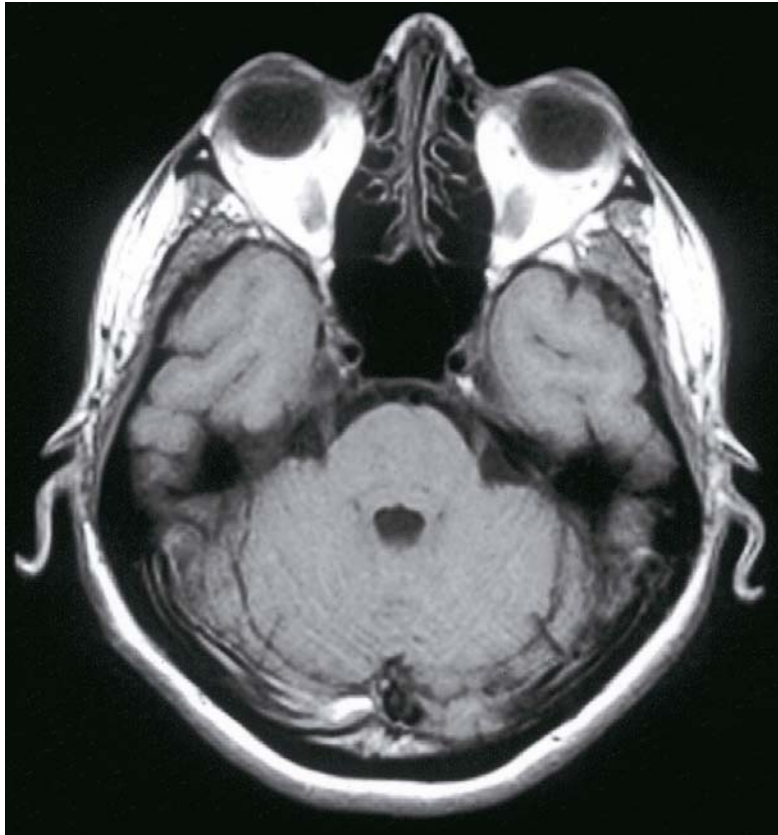
1. Lens oculi
2. Septum nasi
3. M. rectus lat.
4. M. rectus med.
5. Recessus sphenoidalialis
6. Sinus sphenoidalis
7. Polus temporalis
8. Sella turcica et hypophysis



9. A. carotis int.
10. Dorsum sellae
11. Pons
12. Cisterna ambiens
13. Auricula
14. Ventriculus quartus
15. Vermis cerebelli
16. Sinus sagittalis sup.
17. Lobus occipitalis



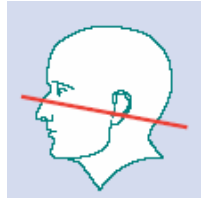
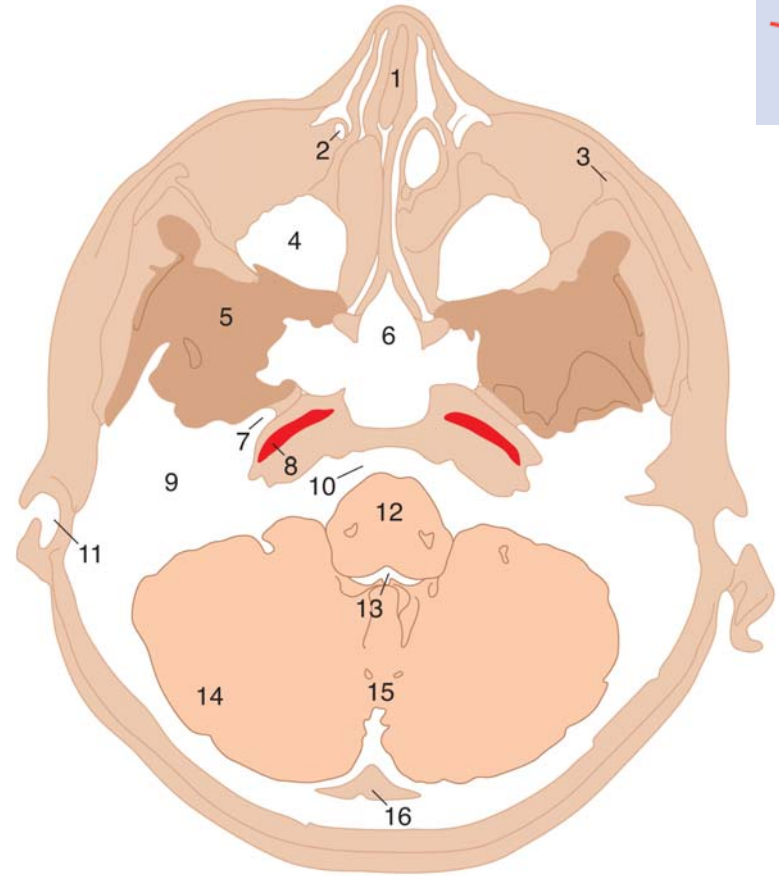
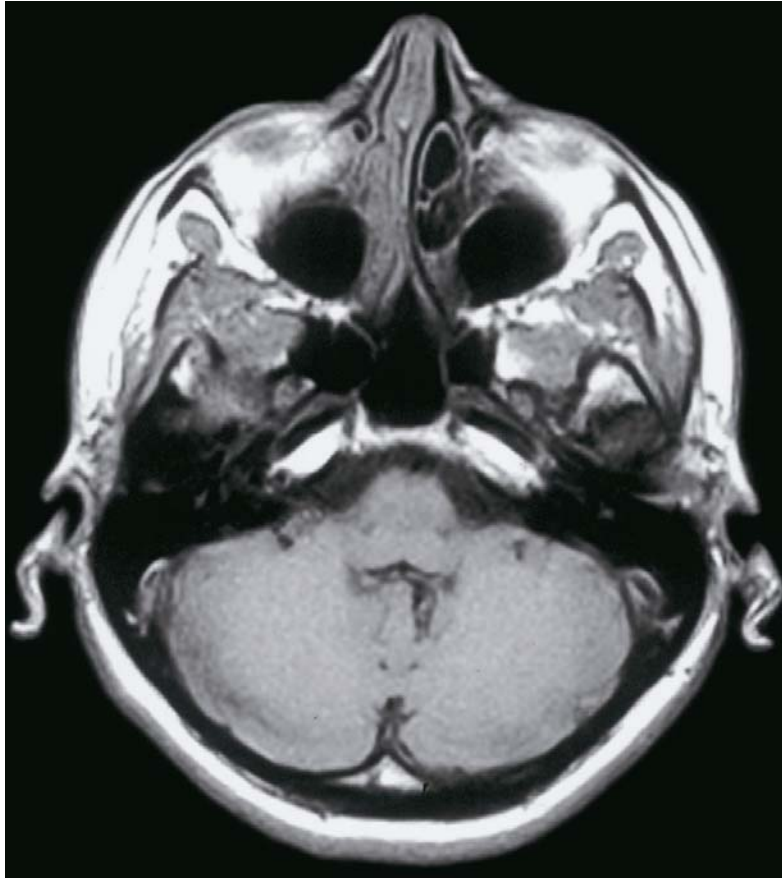
# Agy, T1 súlyozott axialis MRI felvétel / 7.



1. Bulbus oculi
2. Orbita
3. Cellulae ethmoidales
4. Polus temporalis
5. Sinus sphenoidalis
6. A. carotis int.
7. Clivus
8. A. basilaris
9. N. trigeminus

10. Pons
11. Pedunculus cerebellaris med. (brachium pontis)
12. Ventriculus quartus
13. Auricula
14. Hemispherium cerebelli
15. Vermis cerebelli
16. Confluence sinuum
17. Protuberantia occipitalis int.

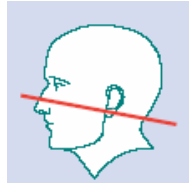
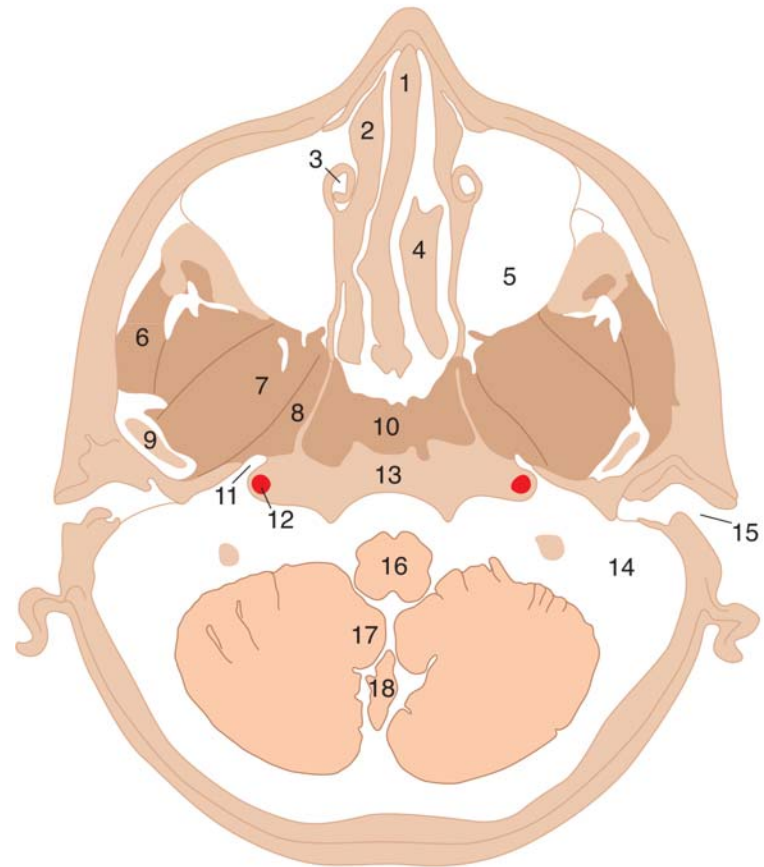
## Agy, T1 súlyozott axialis MRI felvétel / 8.



1. Septum nasi
2. Ductus nasolacrimalis
3. Os zygomaticum
4. Sinus maxillaris (Highmore)
5. M. pterygoideus lat.
6. Sinus sphenoidalis
7. Tuba auditiva (Eustach)
8. A. carotis int.

9. Pars petrosa
10. Cisterna pontis med. (prepontin cisterna)
11. Auricula
12. Pons
13. Ventriculus quartus
14. Hemispherium cerebelli
15. Vermis cerebelli
16. Crista occipitalis int.

## Agy, T1 súlyozott axialis MRI felvétel / 9.

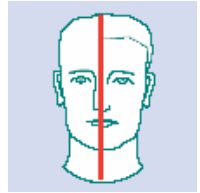
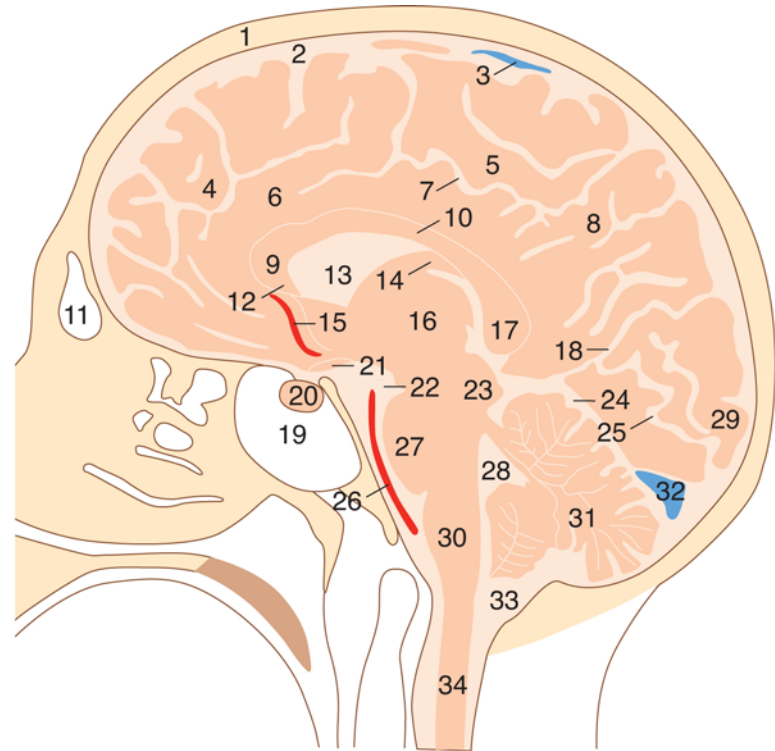
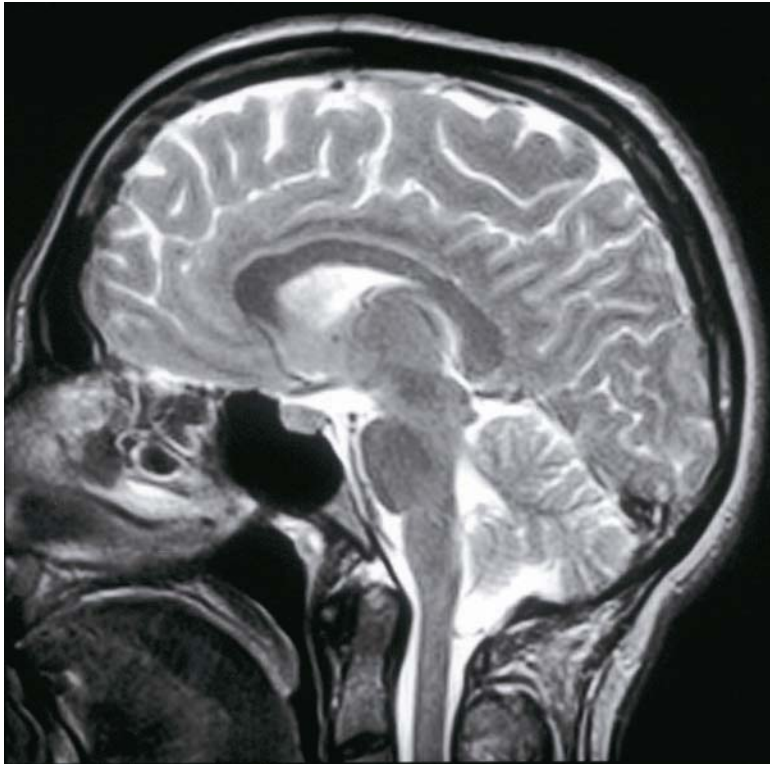


1. Septum nasi
2. Concha nasalis inf.
3. Ductus nasolacrimalis
4. Concha nasalis med.
5. Sinus maxillaris (Highmore)
6. M. masseter
7. M. pterygoideus lat.
8. M. tensor veli palatini
9. Caput mandibulae

10. M. longus capitis
11. Tuba auditiva (Eustach)
12. A. carotis int.
13. Pars basilaris ossis occipitalis
14. Cellulae mastoideae
15. Meatus acusticus ext.
16. Medulla oblongata
17. Tonsilla cerebelli
18. Vermis cerebelli

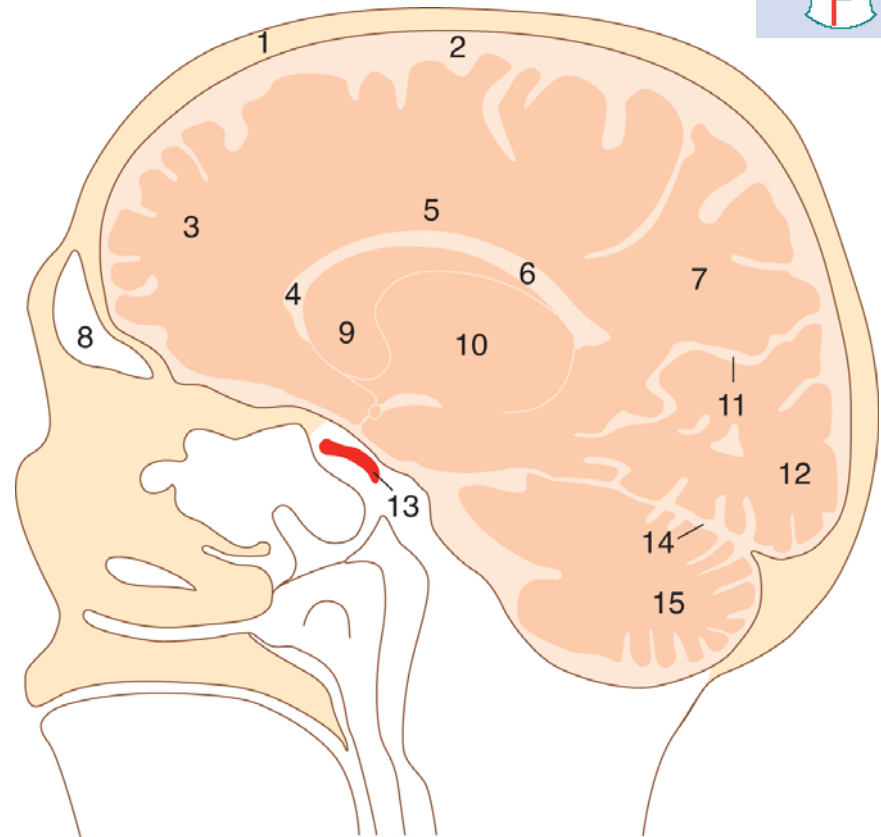
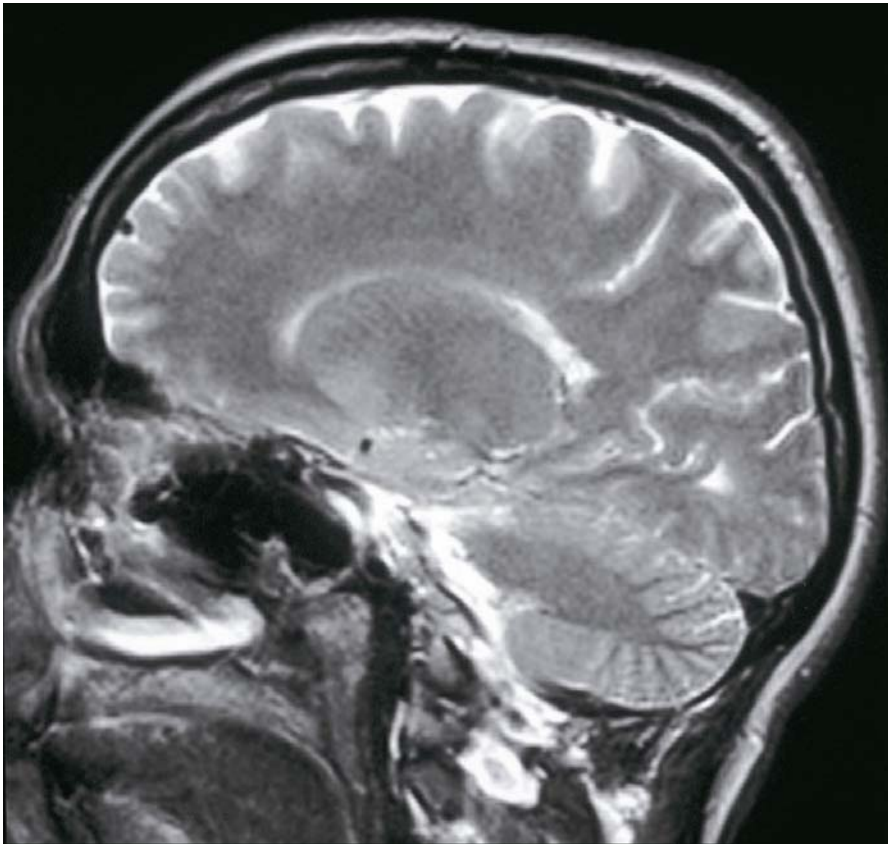
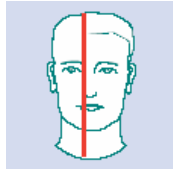


# Agy, T2 súlyozott sagittalis MRI felvétel / 1.



- |   |   |   |
|---|---|---|
| 1. Calvaria                             | 12. Rostrum corporis callosi                | 23. Tectum mesencephali                     |
| 2. Spatium subdurale et subarachnoidale | 13. Ventriculus lat.                        | 24. Tentorium cerebelli                     |
| 3. V. corticalis                        | 14. Fornix                                  | 25. Fissura calcarina                       |
| 4. Gyrus frontalis med.                 | 15. A. cerebri ant.                         | 26. A. basilaris                            |
| 5. Lobulus paracentralis                | 16. Thalamus                                | 27. Pons                                    |
| 6. Gyrus cinguli                        | 17. Splenium corporis callosi               | 28. Ventriculus quartus                     |
| 7. Sulcus cinguli                       | 18. Sulcus parieto-occipitalis              | 29. Cuneus                                  |
| 8. Precuneus                            | 19. Sinus sphenoidalis                      | 30. Medulla oblongata                       |
| 9. Genu corporis callosi                | 20. Hypophysis et sella turcica             | 31. Vermis cerebelli (arbor vitae)          |
| 10. Truncus corporis callosi            | 21. Chiasma opticum, cisterna suprasellaris | 32. Confluens sinuum                        |
| 11. Sinus frontalis                     | 22. Fossa interpeduncularis                 | 33. Cisterna cerebellomedullaris (c. magna) |
|   |   | 34. Medulla spinalis                        |

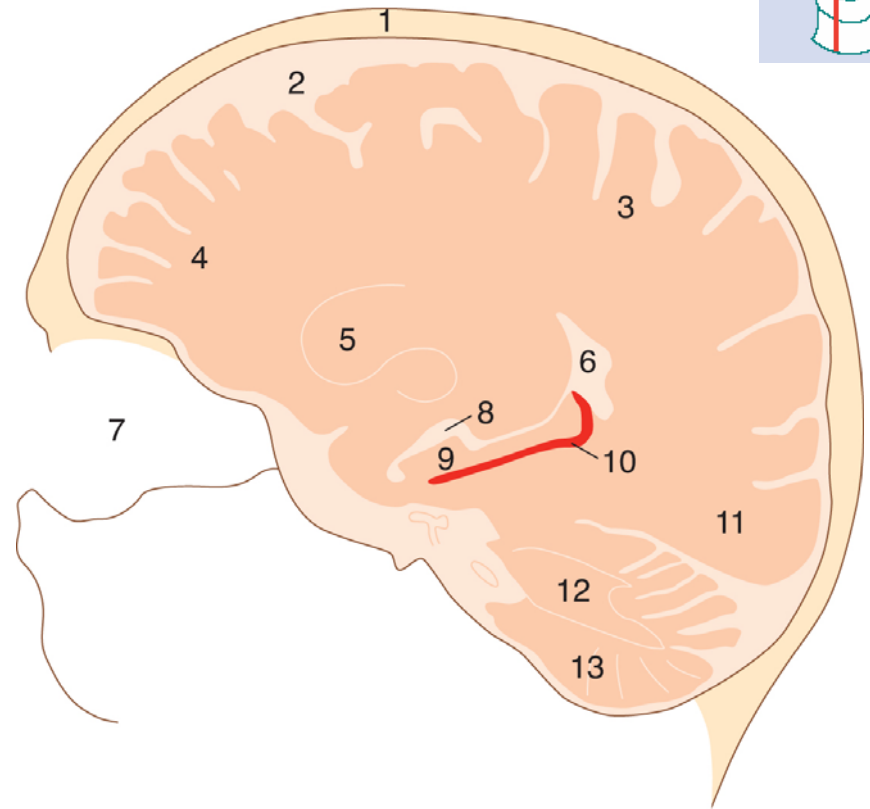
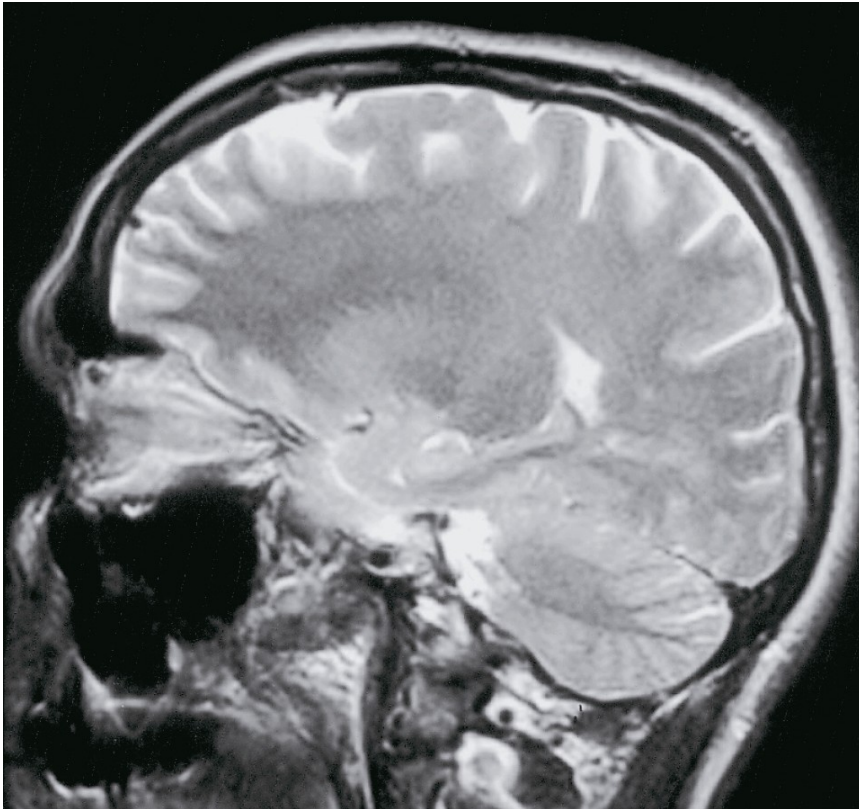
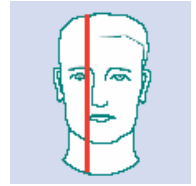
## Agy, T2 súlyozott sagittalis MRI felvétel / 2.



1. Calvaria
2. Spatium subdurale et subarachnoidale
3. Lobus frontalis
4. Cornu ant. ventriculi lat.
5. Corpus callosum
6. Ventriculus lat. (pars centralis)
7. Precuneus

8. Sinus frontalis
9. Caput nuclei caudati
10. Thalamus
11. Sulcus parieto-occipitalis
12. Cuneus
13. A. carotis int. (pars intracavernosa)
14. Tentorium cerebelli
15. Cerebellum

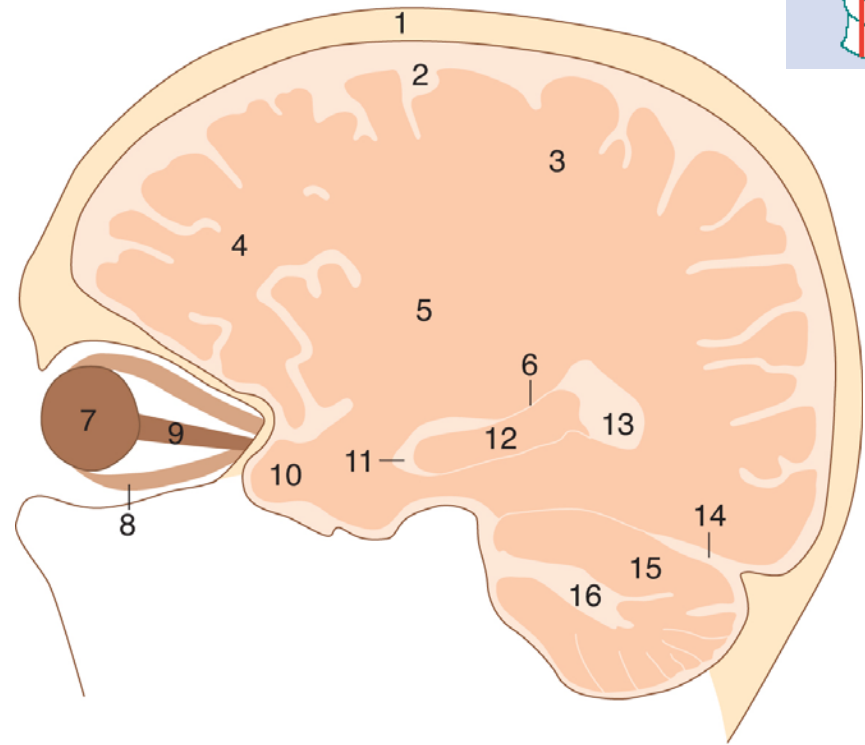
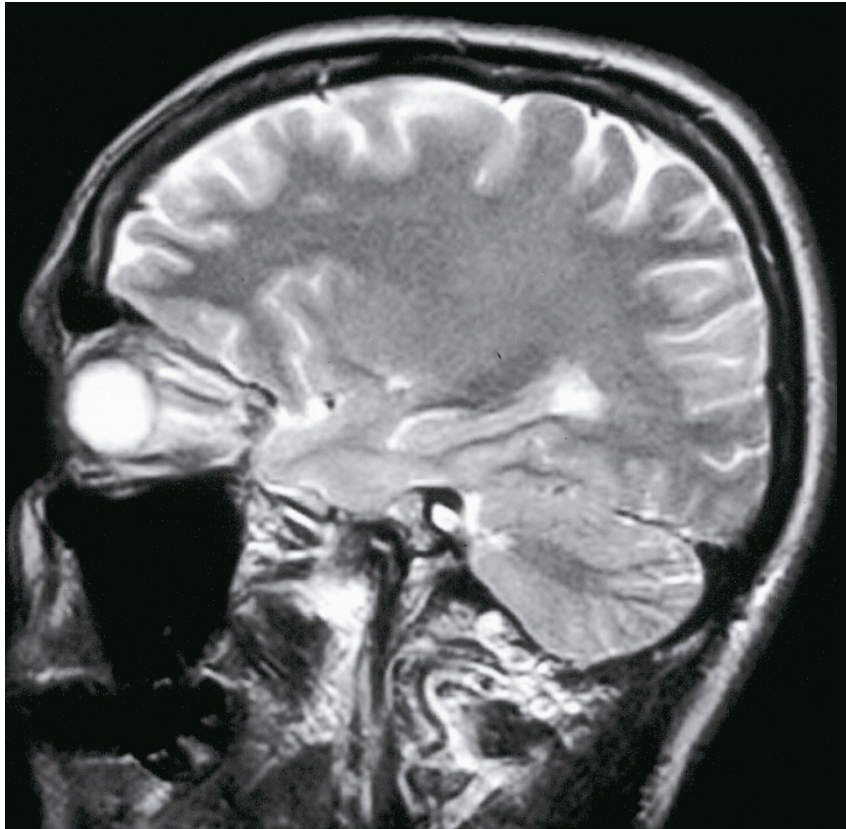
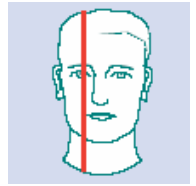
## Agy, T2 súlyozott sagittalis MRI felvétel / 3.



1. Calvaria
2. Spatium subdurale et subarachnoidale
3. Lobus parietalis
4. Lobus frontalis
5. Caput nuclei caudati
6. Ventriculus lat, pars centralis
7. Orbita

8. Cornu inf. ventriculi lat.
9. Hippocampus
10. Plexus choroideus ventr. lat.
11. Lobus occipitalis
12. Substantia alba cerebelli (medulla)
13. Substantia grisea cerebelli (cortex)

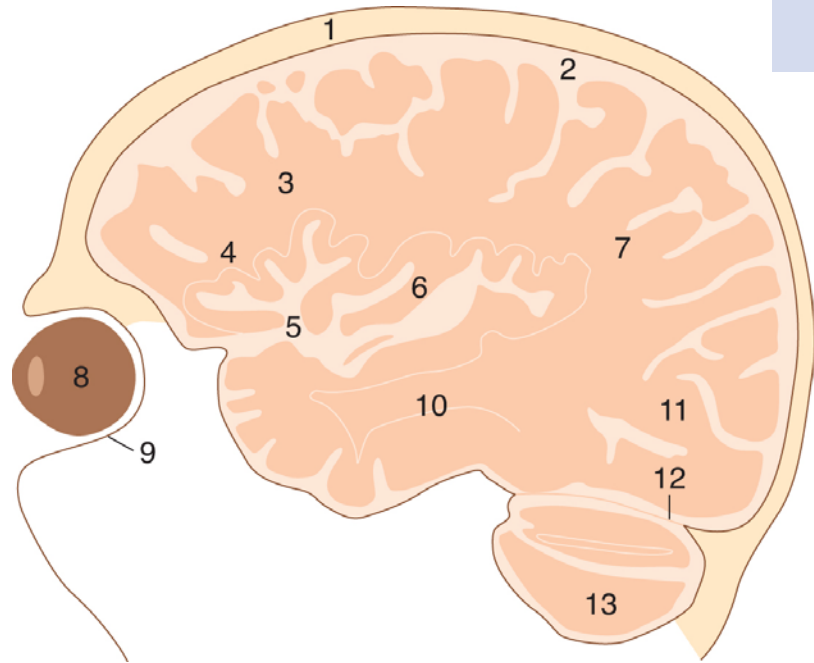
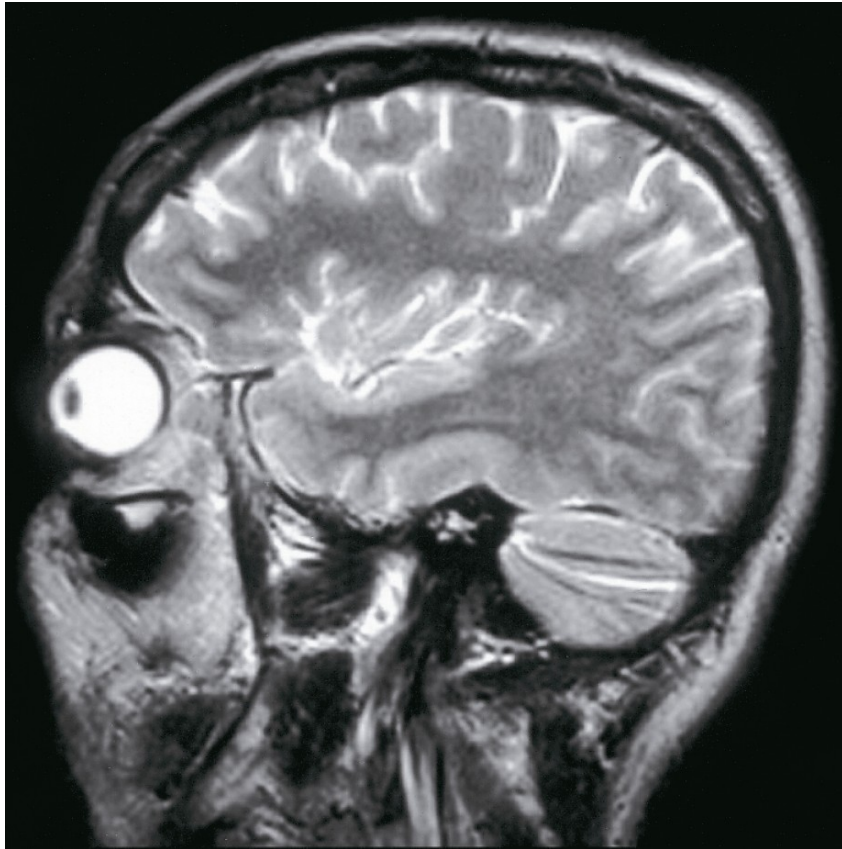
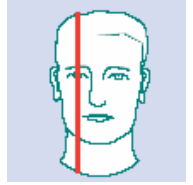
# Agy, T2 súlyozott sagittalis MRI felvétel / 4.



1. Calvaria
2. Spatium subdurale et subarachnoidale
3. Lobus parietalis
4. Lobus frontalis
5. Nucleus lentiformis
6. Cauda nuclei caudati
7. Bulbus oculi
8. M. rectus bulbi inferior

9. N. opticus
10. Polus temporalis
11. Cornu inf. ventriculi lat.
12. Hippocampus
13. Cornu post. ventriculi lat.
14. Tentorium cerebelli
15. Cerebellum (cortex)
16. Cerebellum (medulla)

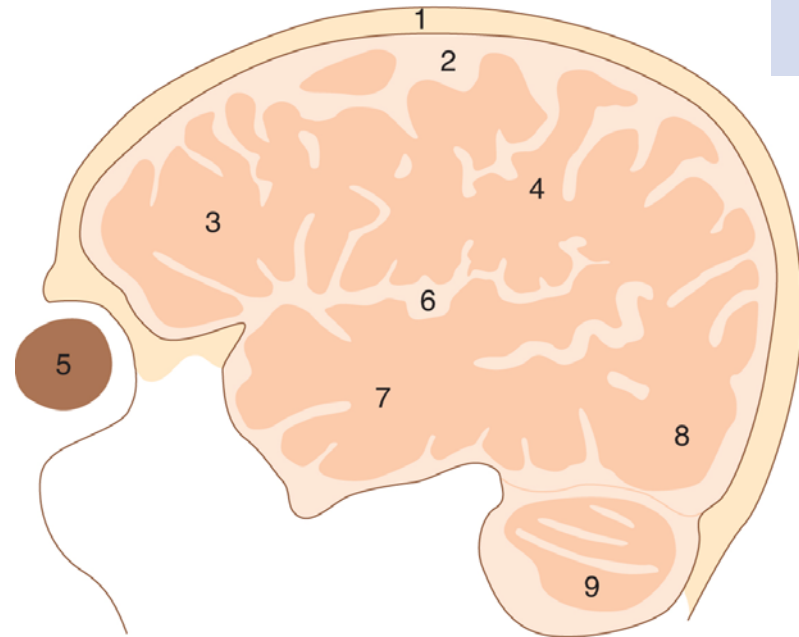
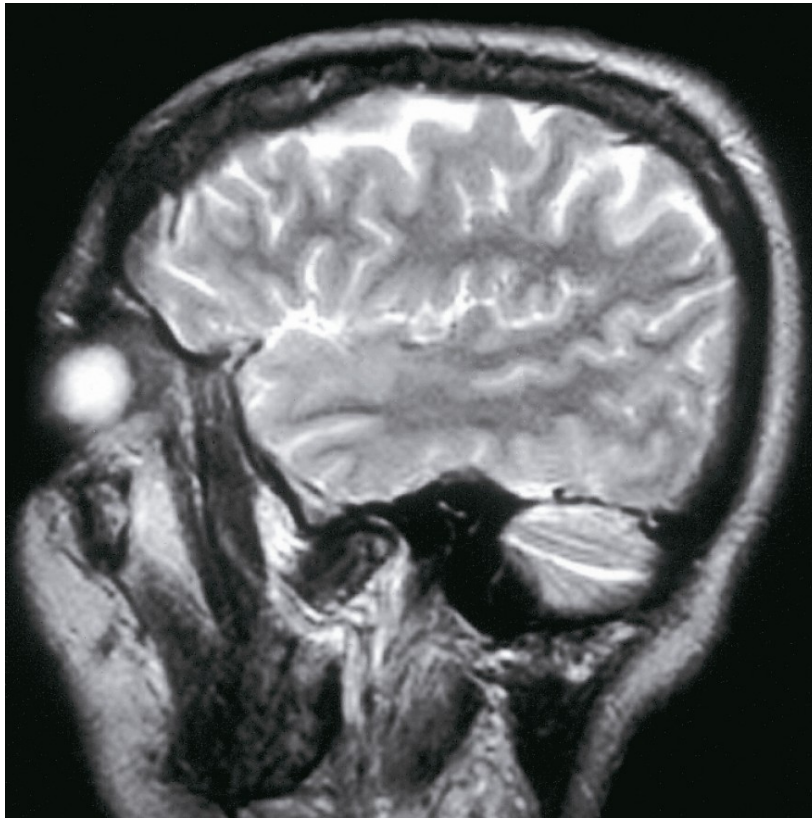
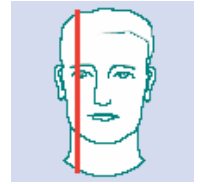
# Agy, T2 súlyozott sagittalis MRI felvétel / 5.



- 1. Calvaria
- 2. Spatium subdurale et subarachnoidale
- 3. Lobus frontalis
- 4. Operculum frontale
- 5. Fissura lateralis (Sylvii)
- 6. Gyri insulares

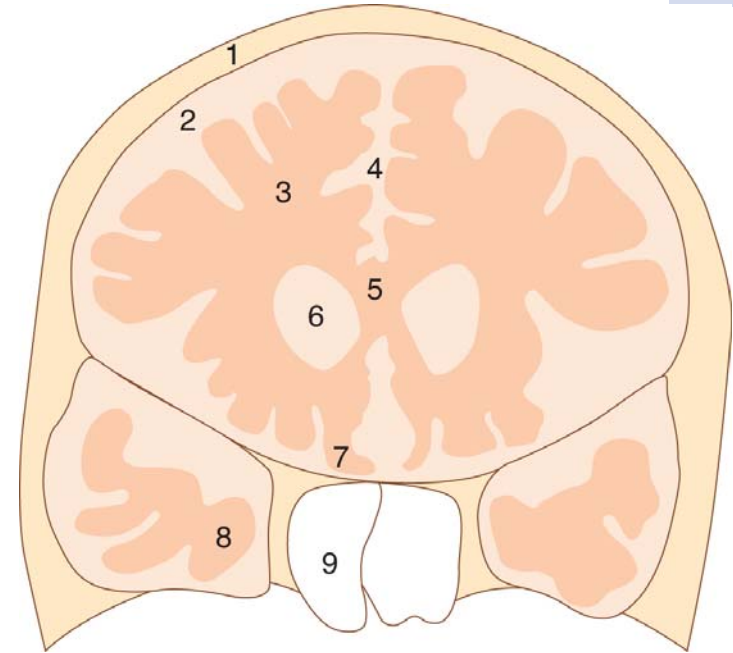
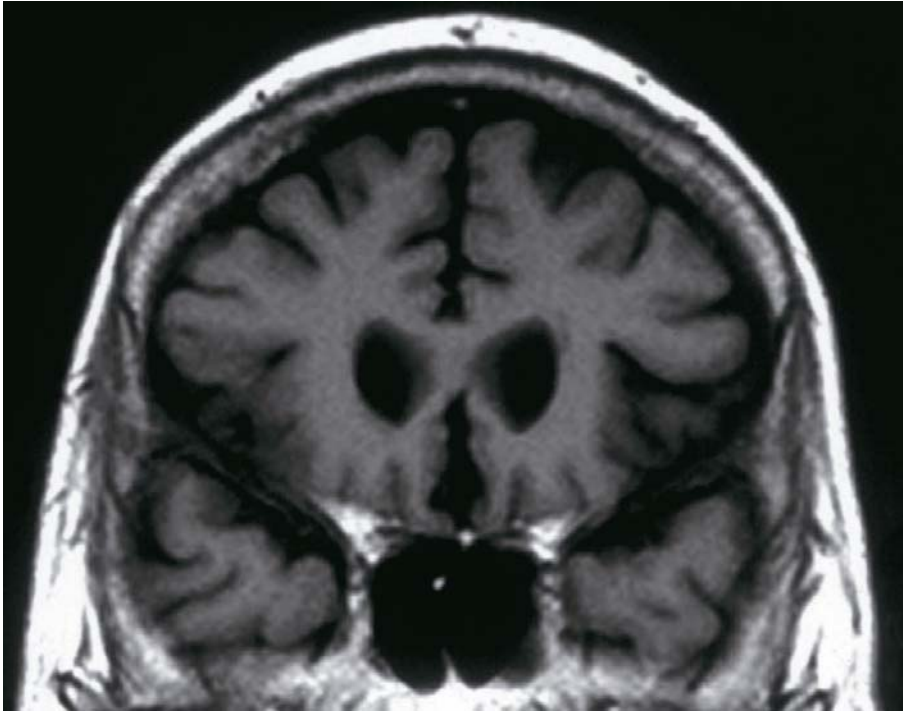
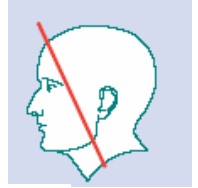
- 7. Lobus parietalis
- 8. Bulbus oculi
- 9. Orbita (maxilla)
- 10. Lobus temporalis
- 11. Lobus occipitalis
- 12. Tentorium cerebelli
- 13. Cerebellum

# Agy, T2 súlyozott sagittalis MRI felvétel / 6.



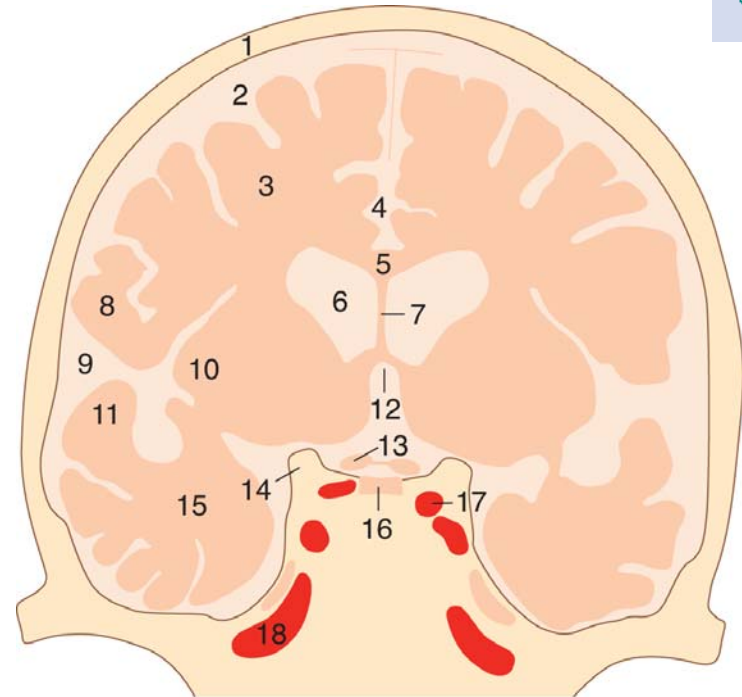
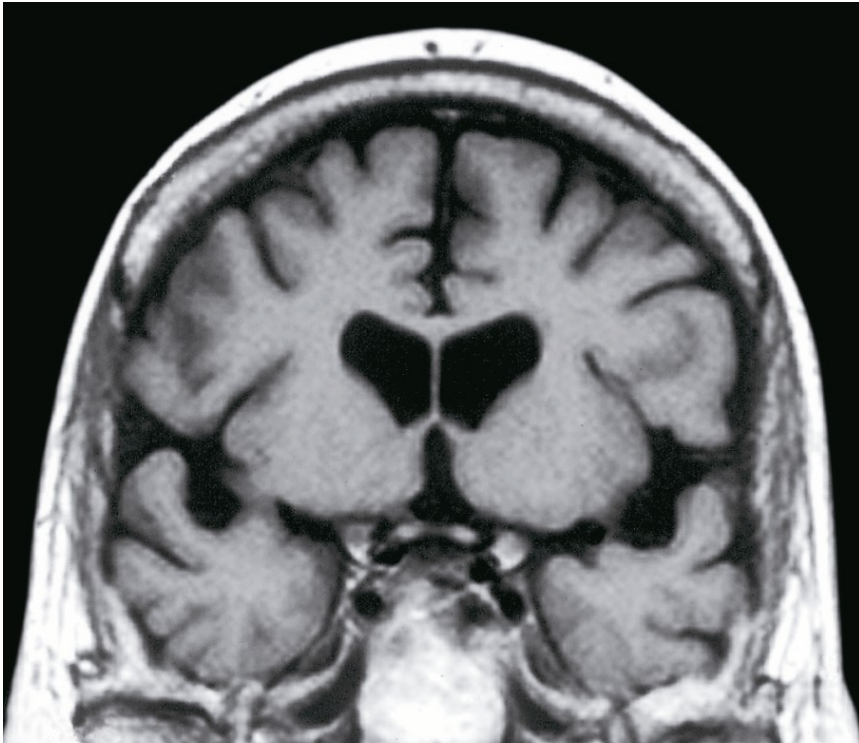
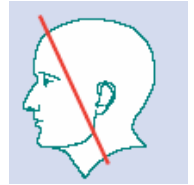
1. Calvaria
2. Spatium subdurale et subarachnoidale
3. Lobus frontalis
4. Lobus parietalis
5. Bulbus oculi
6. Sulcus lat.
7. Lobus temporalis
8. Lobus occipitalis
9. Cerebellum

## Agy, coronalis MRI felvétel / 1.



1. Calvaria
2. Cavum subdurale et subarachnoidale
3. Lobus frontalis
4. Falx cerebri et fissura longitudinalis cerebri
5. Genu corporis callosi
6. Ventriculus lat., cornu ant.
7. Gyrus rectus
8. Lobus temporalis
9. Sinus sphenoidalis

## Agy, coronalis MRI felvétel / 2.

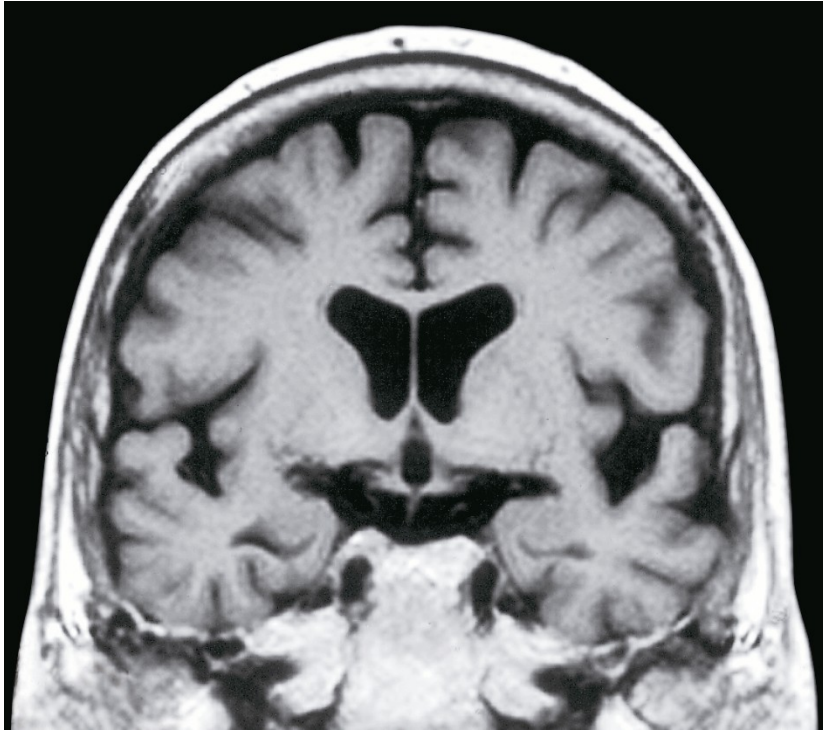


1. Calvaria
2. Spatium subdurale et subarachnoidale
3. Lobus frontalis
4. Fissura longitudinalis et falx cerebri
5. Corpus callosum
6. Cornu ant. ventriculi lat.
7. Septum pellucidum
8. Operculum frontale
9. Fissura lateralis (Sylvii)

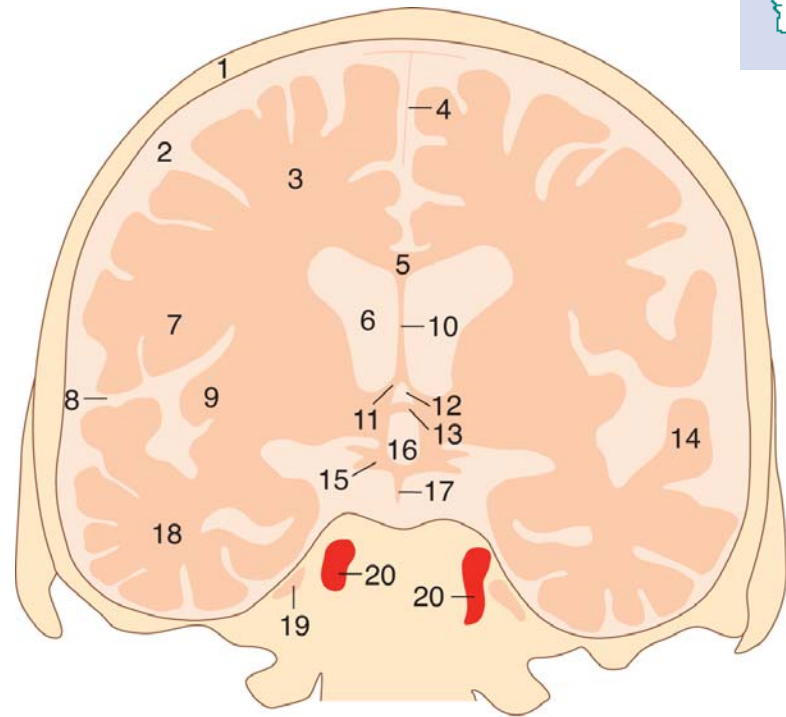
10. Insula
11. Operculum temporale
12. Rostrum corporis callosi
13. Chiasma opticum/cisterna suprasellaris
14. Proc. clinoides ant.
15. Lobus temporalis
16. Gl. pituitaria in sella turcica
17. A. carotis int. (pars intracavernosa)
18. A. carotis int. (canalis et sulcus caroticus)



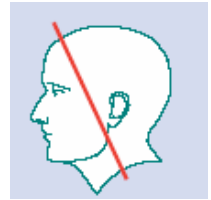
## Agy, coronalis MRI felvétel / 3.



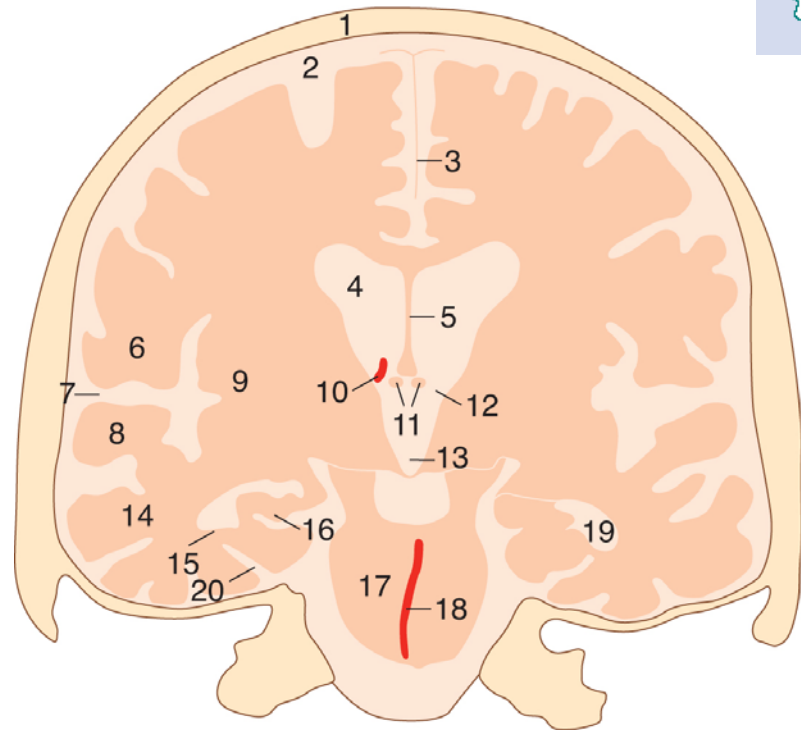
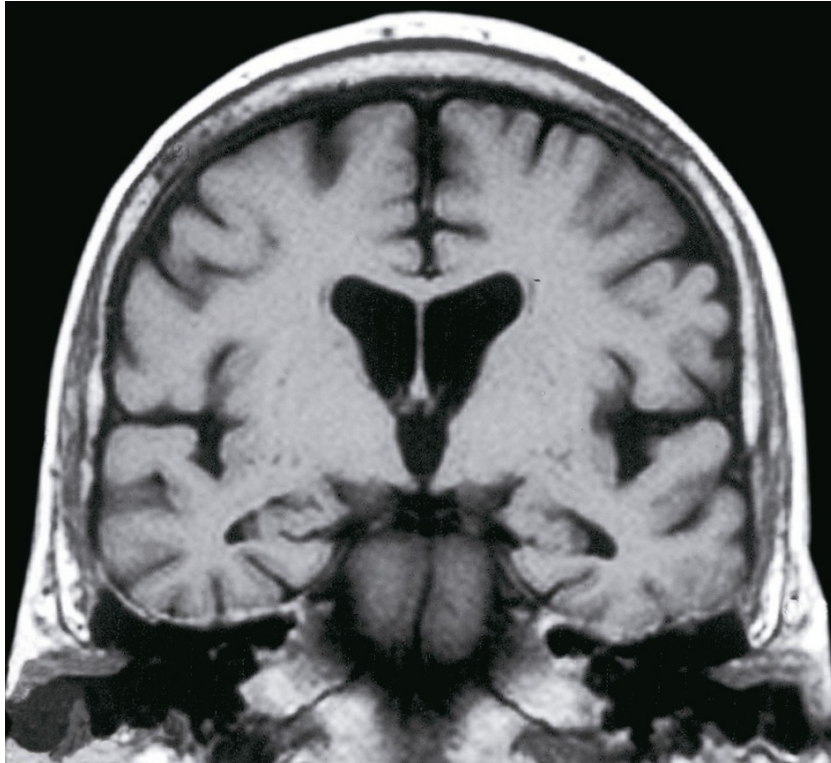
1. Calvaria
2. Spatium subdurale et subarachnoidale
3. Lobus frontalis
4. Falx cerebri
5. Corpus callosum
6. Cornu ant. ventriculi lat.
7. Operculum frontale
8. Fissura lateralis (Sylvii)
9. Insula
10. Septum pellucidum
11. Columna fornicis



12. Recessus triangularis ventriculi tertii
13. Commissura ant.
14. Operculum temporale
15. Tractus opticus
16. Recessus opticus ventriculi tertii
17. Hypophysis-nyél /cisterna suprasellaris
18. Lobus temporalis
19. Ganglion trigeminale (Gasseri)/cavum Meckeli
20. A. carotis int.



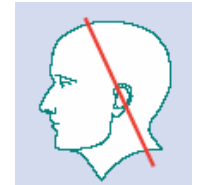
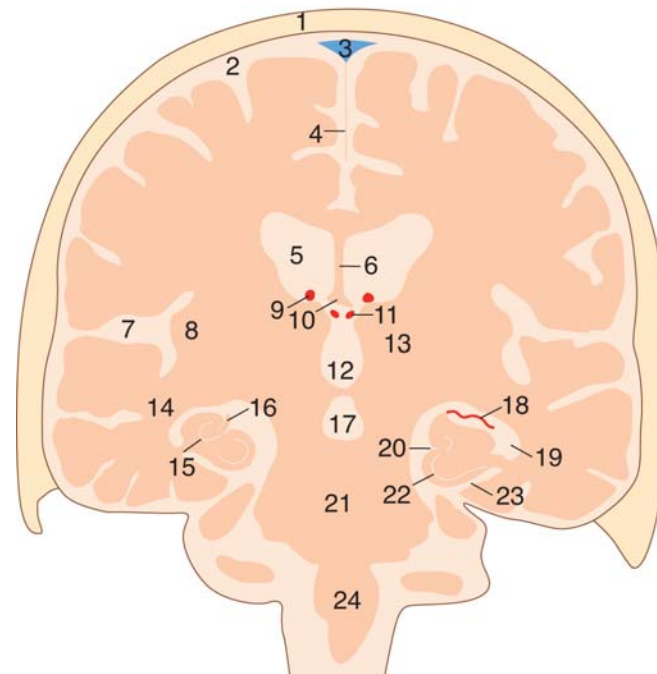
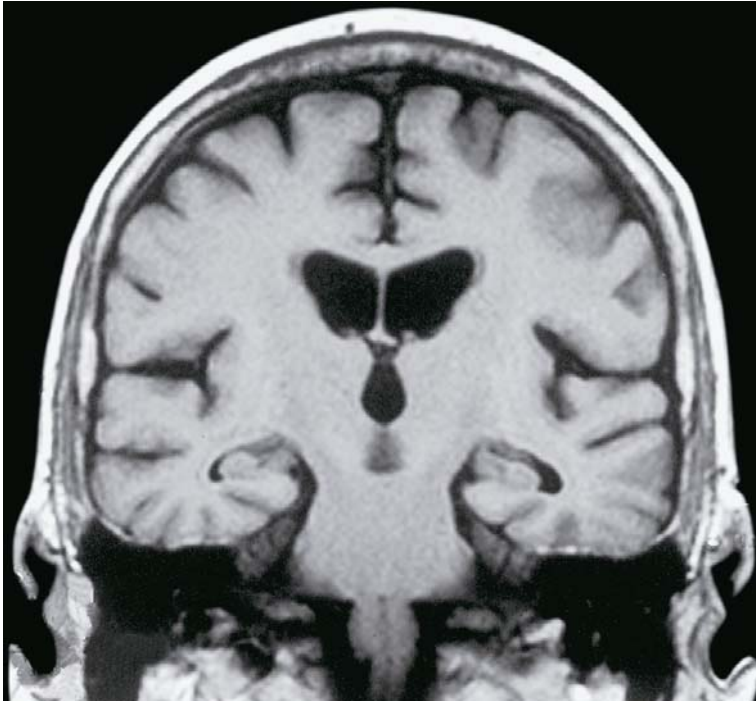
## Agy, coronalis MRI felvétel / 4.



1. Calvaria
2. Spatium subdurale et subarachnoidale
3. Falx cerebri
4. Ventriculus lateralis
5. Septum pellucidum
6. Operculum frontale
7. Fissura lateralis (Sylvii)
8. Operculum temporale
9. Insula
10. Plexus choroideus ventr. lat.

11. Fornix
12. Foramen interventriculare (Monroi)
13. Ventriculus tertius
14. Lobus temporalis
15. Eminentia collateralis
16. Pes hippocampi
17. Pons
18. A. basilaris
19. Cornu inf. ventr. lat.
20. Sulcus collateralis

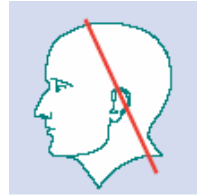
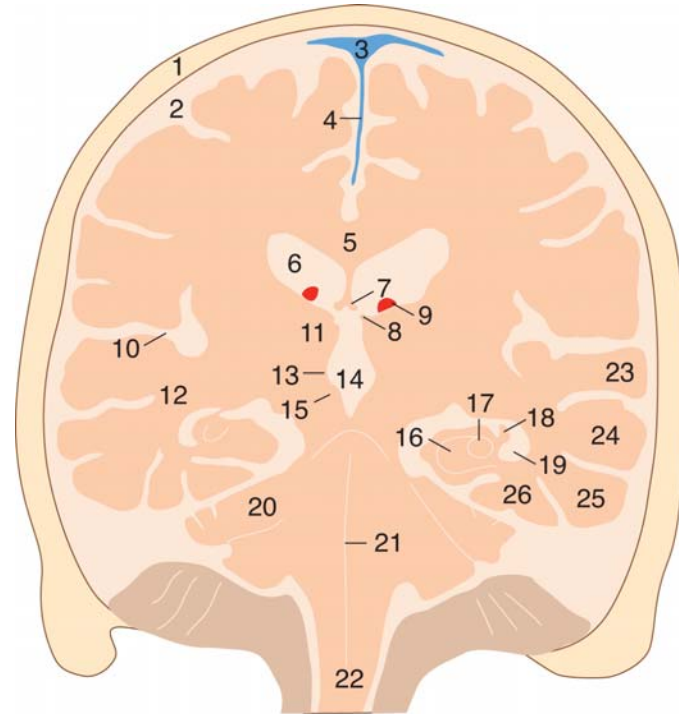
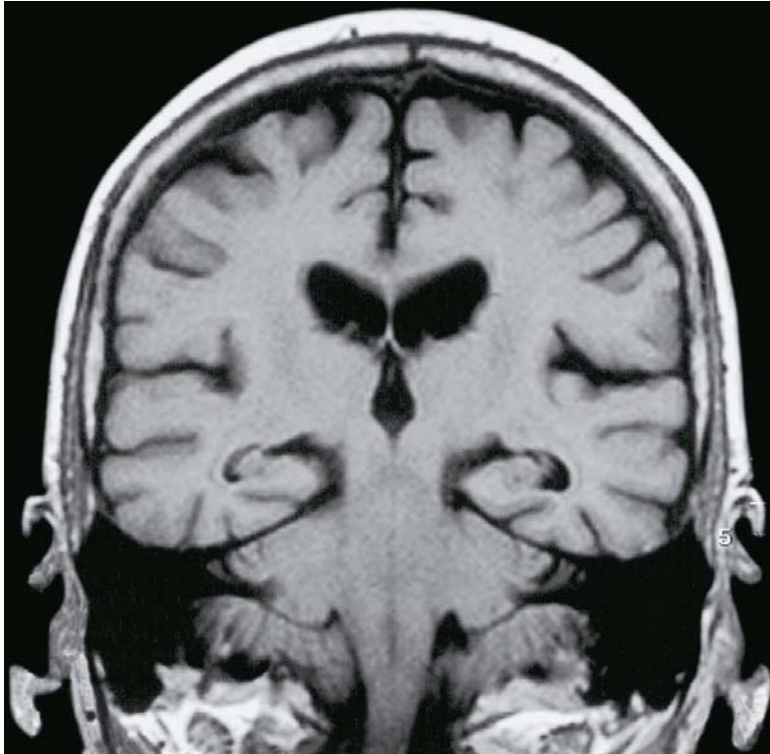
## Agy, coronalis MRI felvétel / 5.



1. Calvaria
2. Cavum subdurale et subarachnoidale
3. Sinus sagittalis sup.
4. Falx cerebri
5. Ventriculus lat.
6. Septum pellucidum
7. Sulcus lateralis
8. Insula
9. Plexus choroideus ventr.lat.
10. Columna fornicis
11. Tela choroidea ventr. tertii
12. Ventriculus tertius

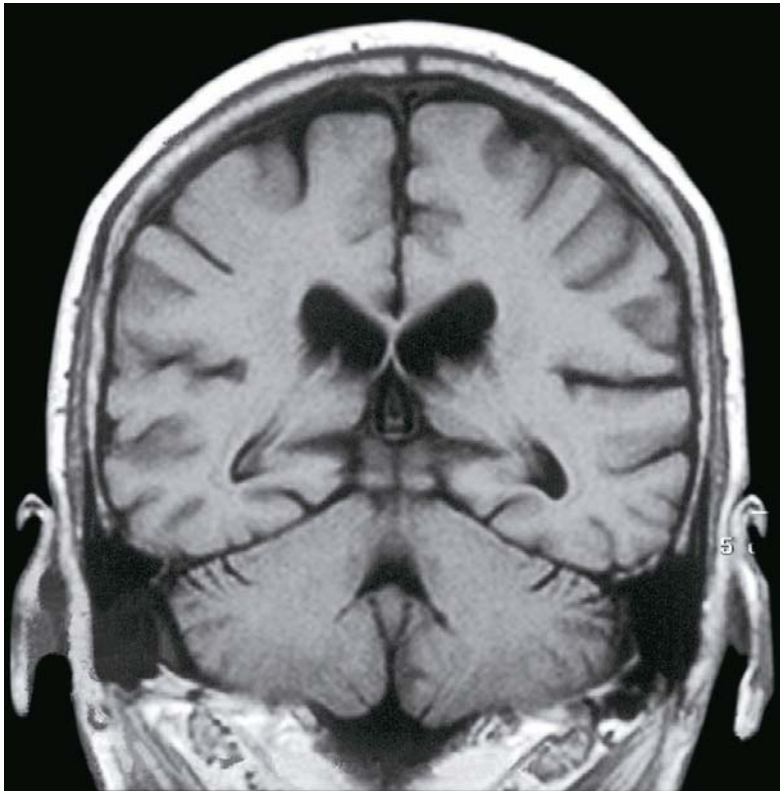
13. Thalamus
14. Lobus temporalis
15. Hippocampus
16. Fimbria hippocampi
17. Fossa interpeduncularis
18. Plexus choroideus ventr. lat. (cornu inf.)
19. Ventriculus lat., cornu inf.
20. Sulcus hippocampi
21. Pons
22. Gyrus parahippocampalis
23. Sulcus collateralis
24. Medulla oblongata

## Agy, coronalis MRI felvétel / 6.

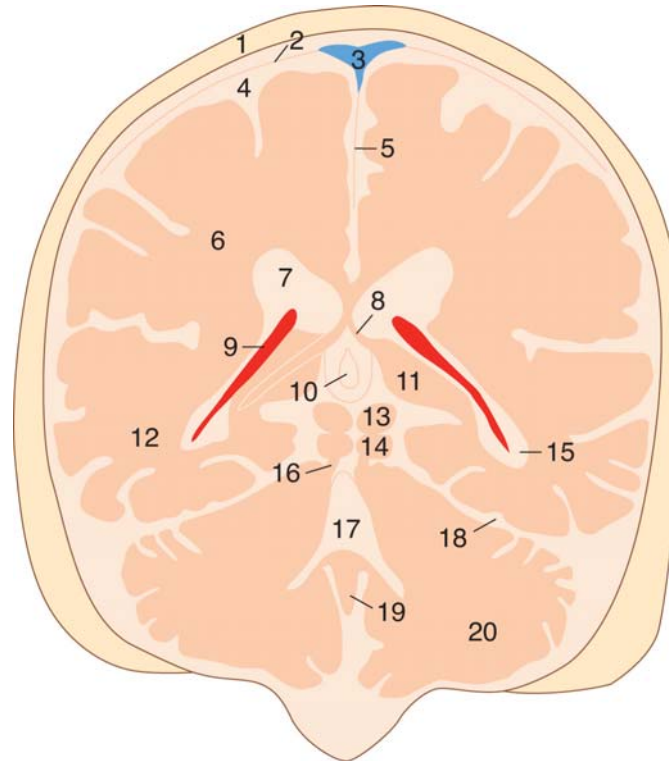


- |   |                                 |                                    |
|---|---------------------------------|------------------------------------|
| 1. Calvaria                             | 10. Fissura lateralis (Sylvii)  | 19. Cornu inf. ventr. lat.         |
| 2. Spatium subdurale et subarachnoidale | 11. Thalamus                    | 20. Pedunculus cerebellaris medius |
| 3. Sinus sagittalis sup.                | 12. Lobus temporalis            | 21. Raphe pontis                   |
| 4. Falx cerebri                         | 13. Sulcus hypothalamicus       | 22. Medulla oblongata              |
| 5. Corpus callosum                      | 14. Ventriculus tertius         | 23. Gyrus temporalis sup.          |
| 6. Ventriculus lat.                     | 15. Hypothalamus                | 24. Gyrus temporalis med.          |
| 7. Fornix                               | 16. Subiculum                   | 25. Gyrus temporalis inf.          |
| 8. Fissura choroidea                    | 17. Hippocampus (cornu Ammonis) | 26. Gyrus occipitotemporalis       |
| 9. Plexus choroideus ventr. lat.        | 18. Fimbria hippocampi          |                                    |

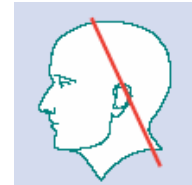
## Agy, coronalis MRI felvétel / 7.



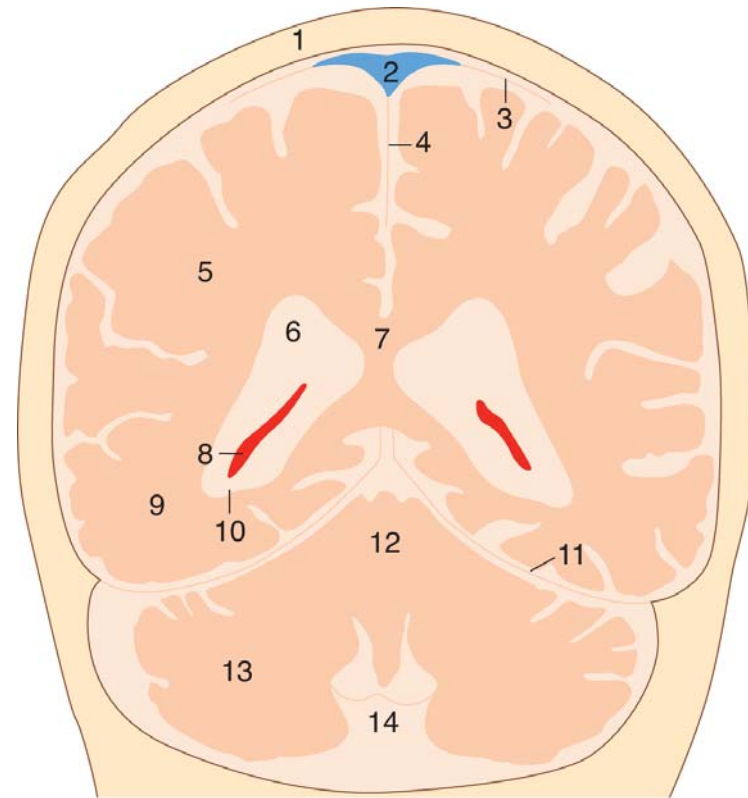
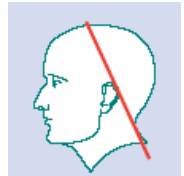
1. Calvaria
2. Cavum subdurale
3. Sinus sagittalis sup. et dura mater
4. Cavum subarachnoidale
5. Falx cerebri
6. Lobus parietalis
7. Ventriculus lat. pars centralis
8. Crus fornicis
9. Plexus choroideus
10. Corpus pineale et recessus suprapinealis



11. Pulvinar thalami
12. Lobus temporalis
13. Colliculus sup.
14. Colliculus inf.
15. Ventriculus lat., cornu inf.
16. Pedunculus cerebellaris sup.
17. Ventriculus quartus
18. Tentorium cerebelli
19. Vermis cerebelli
20. Hemispherium cerebelli



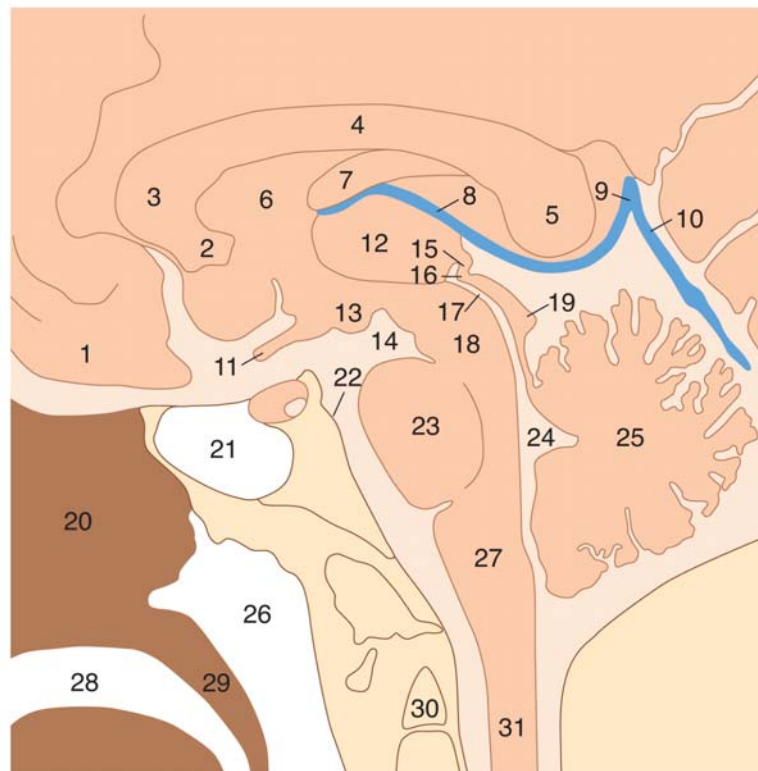
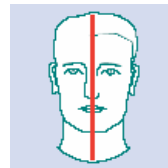
## Agy, coronalis MRI felvétel / 8.



1. Calvaria
2. Sinus sagittalis sup.
3. Dura mater
4. Falx cerebri
5. Lobus parietalis
6. Ventriculus lateralis, pars centralis
7. Splenium corporis callosi

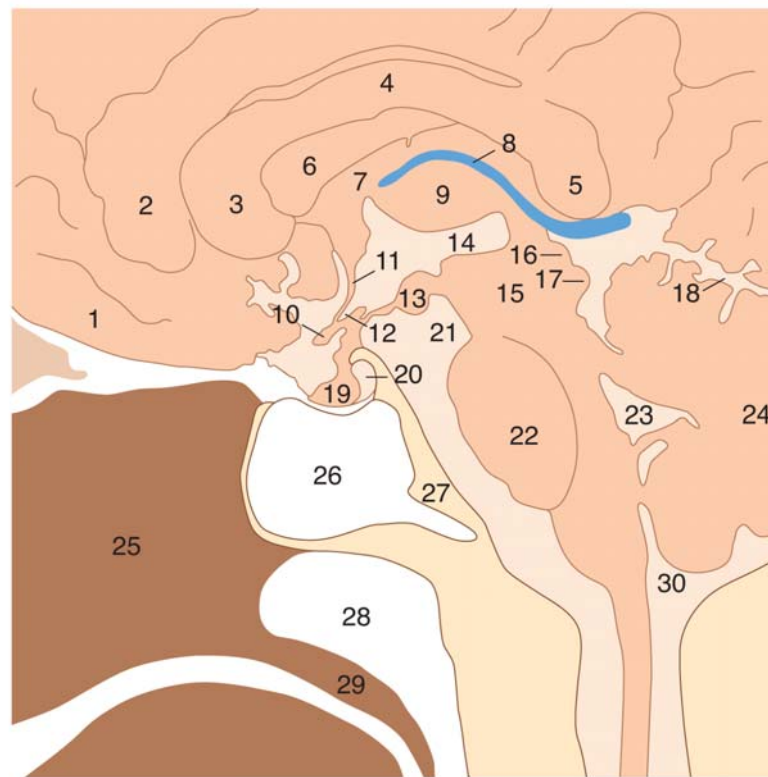
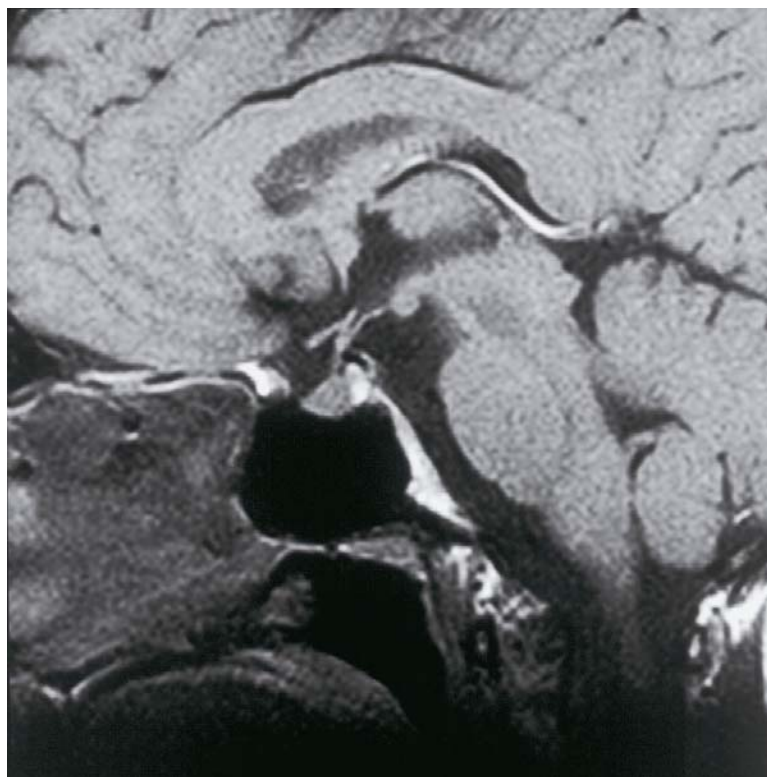
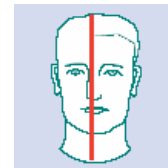
8. Plexus choroideus (glomus choroideum)
9. Lobus temporalis
10. Cornu inf. ventr. lat.
11. Tentorium cerebelli
12. Vermis cerebelli
13. Hemispherium cerebelli
14. Vallecula

## A sella régió sagittalis MRI felvételen / 1.



- |                               |   |                         |
|-------------------------------|---|-------------------------|
| 1. Lobus frontalis            | 11. Chiasma opticum                     | 21. Sinus sphenoidalis  |
| 2. Rostrum corporis callosi   | 12. Thalamus                            | 22. Clivus              |
| 3. Genu corporis callosi      | 13. Corpus mamillare                    | 23. Pons                |
| 4. Truncus corporis callosi   | 14. Fossa et cisterna interpeduncularis | 24. Ventriculus quartus |
| 5. Splenium corporis callosi  | 15. Commissura habenularum              | 25. Cerebellum          |
| 6. Septum pellucidum          | 16. Commissura posterior                | 26. Nasopharynx         |
| 7. Fornix                     | 17. Aquaeductus cerebri                 | 27. Medulla oblongata   |
| 8. V. cerebri interna         | 18. Mesencephalon                       | 28. Cavum oris          |
| 9. V. cerebri magna (Galenii) | 19. Tectum, Corpora quadrigemina        | 29. Palatum molle       |
| 10. Sinus rectus              | 20. Cavum et septum nasi                | 30. Dens axis           |
|                               |   | 31. Medulla spinalis    |

## A sella régió sagittalis MRI felvételen / 2.



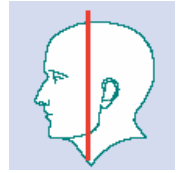
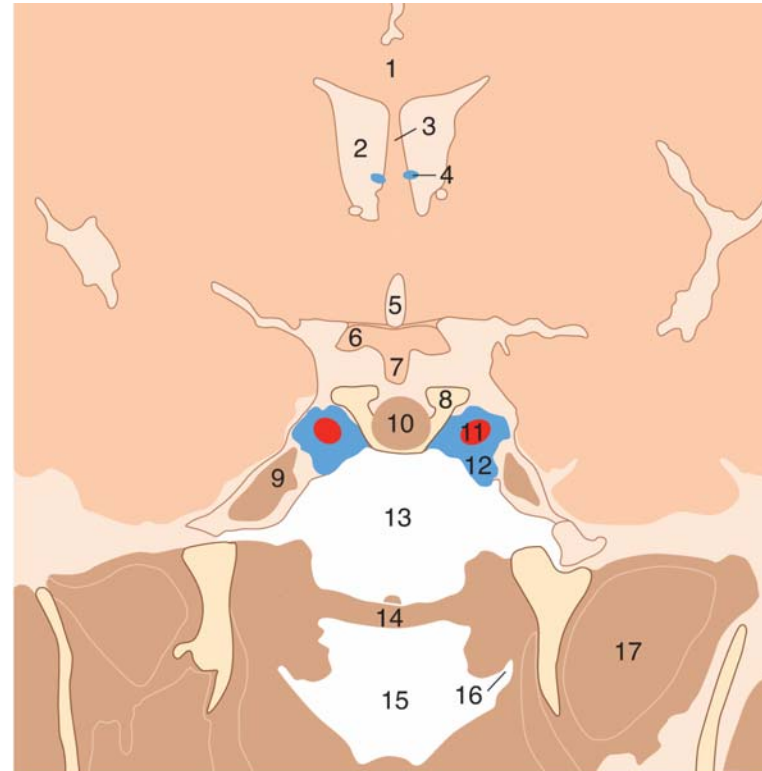
1. Lobus frontalis
2. Gyrus cinguli
3. Genu corporis callosi
4. Truncus corporis callosi
5. Splenium corporis callosi
6. Septum pellucidum
7. Columna fornicis
8. V. cerebri interna
9. Thalamus
10. Chiasma opticum

11. Lamina terminalis
12. Recessus opticus
13. Corpus mamillare
14. Ventriculus tertius
15. Mesencephalon
16. Colliculus sup.
17. Colliculus inf.
18. Tentorium cerebelli
19. Glandula pituitaria (lobus ant.)
20. Glandula pituitaria (lobus post.)

21. Fossa et cisterna interpeduncularis
22. Pons
23. Ventriculus quartus
24. Cerebellum
25. Cavum et septum nasi
26. Sinus sphenoidalis
27. Clivus
28. Nasopharynx
29. Palatum molle
30. Cisterna cerebellomedullaris



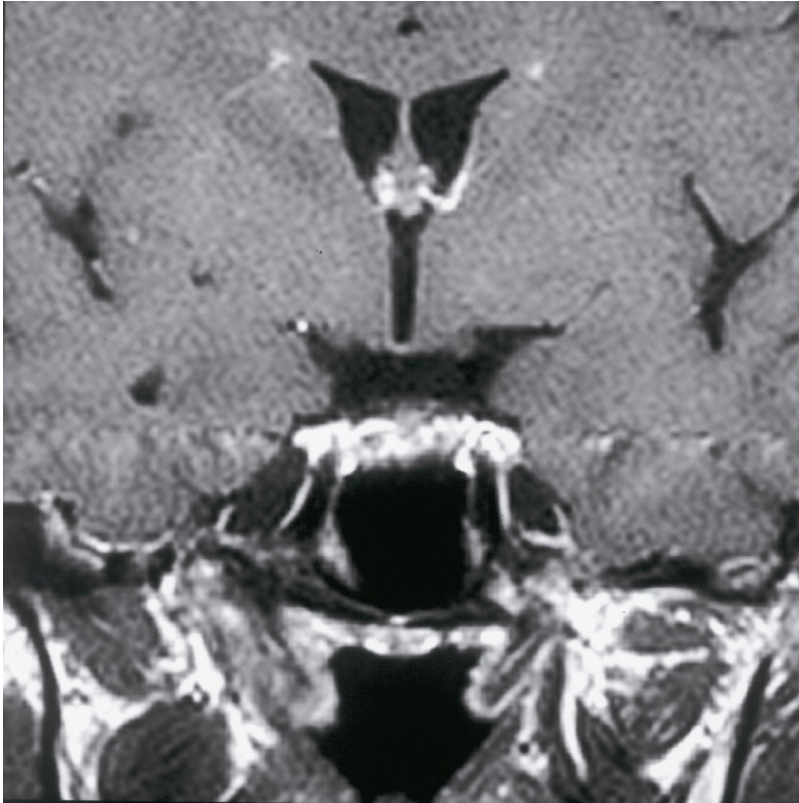
## A sella régió coronalis MRI felvételen / 1.



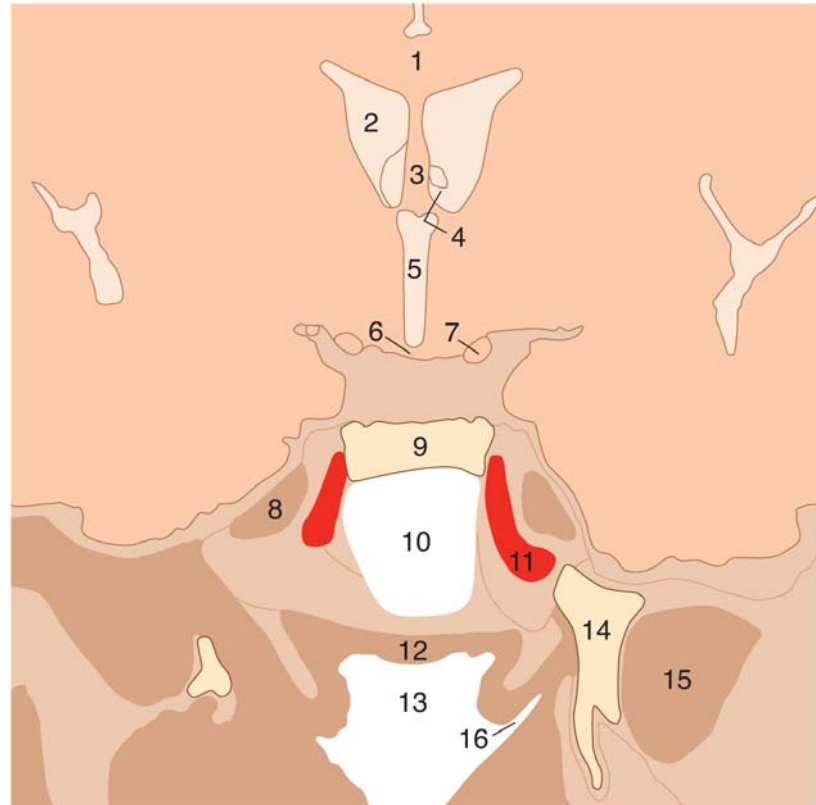
1. Corpus callosum
2. Ventriculus lateralis (cornu anterius)
3. Septum pellucidum
4. V. septi pellucidi
5. Recessus opticus ventriculi tertii
6. Chiasma opticum
7. Hypophysis-nyél
8. Proc. clinoides post.
9. Cavum trigeminale

10. Glandula pituitaria (lobus post.)
11. A. carotis int.
12. Sinus cavernosus
13. Sinus sphenoidalis
14. Fornix pharyngis
15. Nasopharynx
16. Ostium pharyngeum tubae auditivae
17. M. pterygoideus lateralis

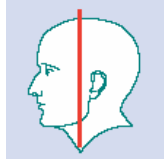
## A sella régió coronalis MRI felvételen / 2.



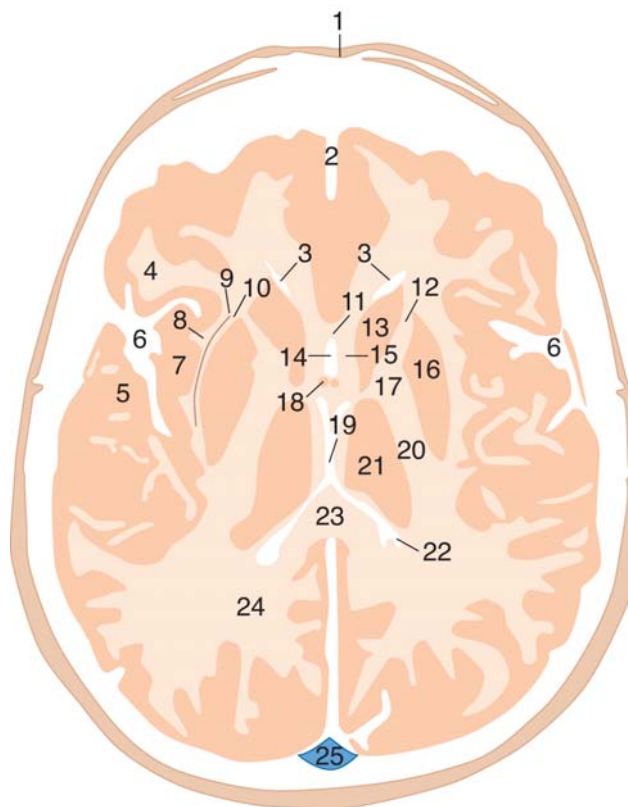
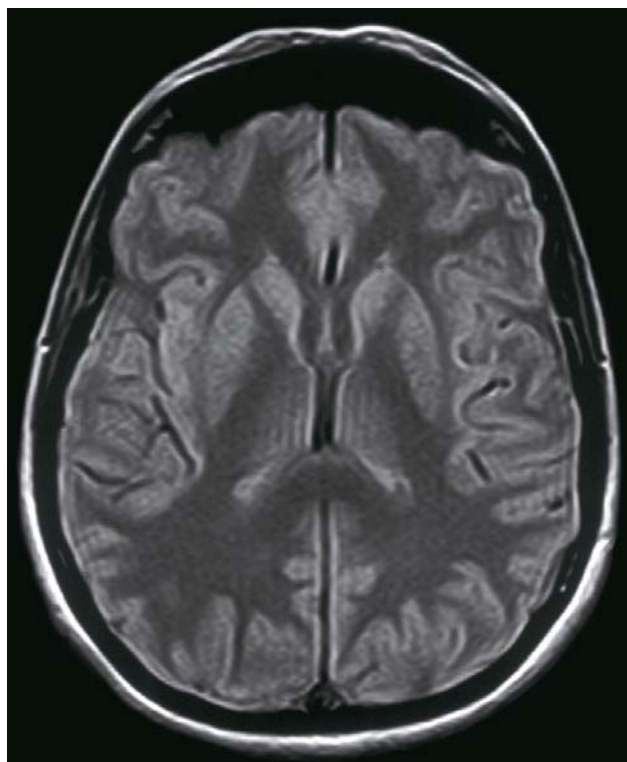
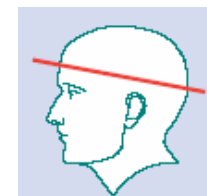
1. Corpus callosum
2. Ventriculus lateralis (cornu anterius)
3. Septum pellucidum
4. Foramen interventriculare
5. Ventriculus tertius
6. Paries basalis ventriculi tertii
7. Tractus opticus
8. Cavum trigeminale (Meckeli)
9. Dorsum sellae



10. Sinus sphenoidalis
11. A. carotis int.
12. Fornix pharyngis
13. Nasopharynx
14. Proc. pterygoideus
15. M. pterygoideus lat.
16. Ostium pharyngeum tubae auditivae



## Capsula interna, T1 súlyozott axialis MRI felvétel

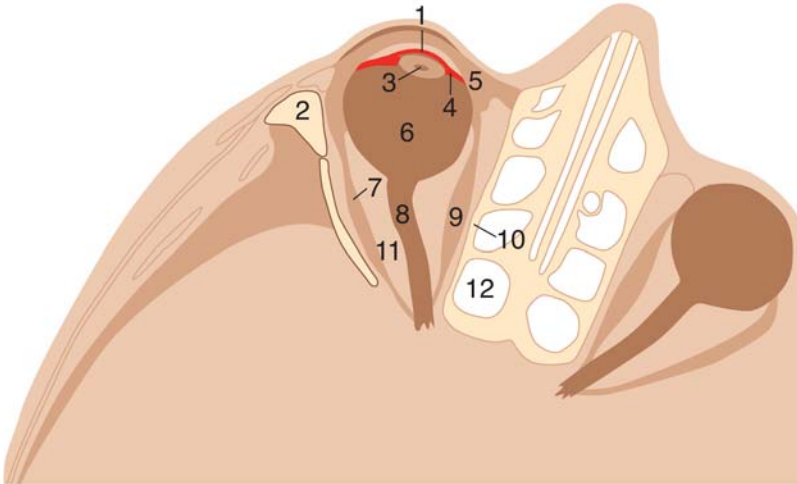
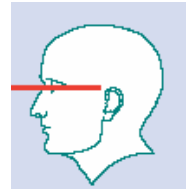


1. Stratum adiposum subcutaneum
2. Fissura longitudinalalis
3. Ventriculus lat., cornu ant.
4. Operculum frontale
5. Operculum temporale
6. Fossa lateralis Sylvii
7. Insula
8. Capsula extrema

9. Claustrum
10. Capsula externa
11. Rostrum corporis callosi
12. Crus ant. capsulae int.
13. Caput nucl. caudati
14. Cisterna pericallosa
15. Area subcallosa
16. Nucl. lentiformis

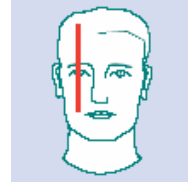
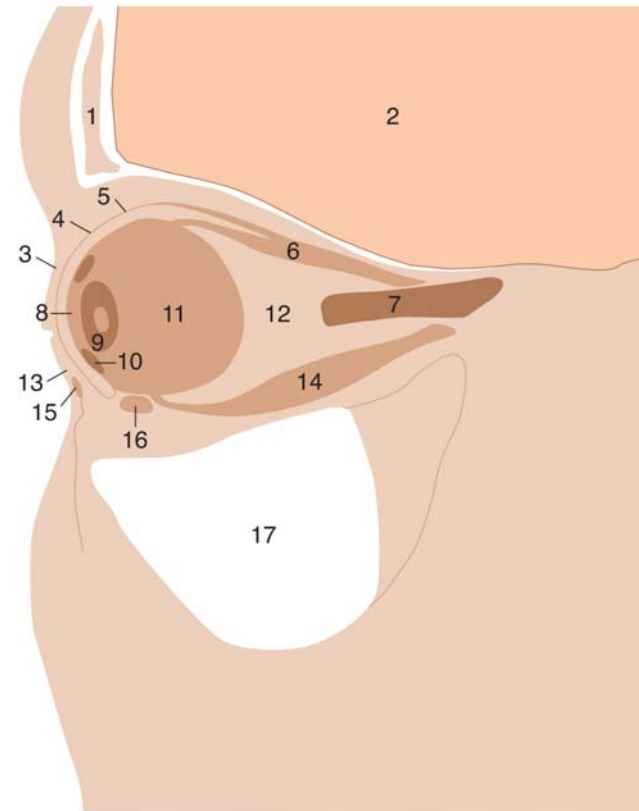
17. Genu capsulae int.
18. Columnae fornicis
19. Ventriculus tertius et venae cerebri intt
20. Crus post. capsulae int.
21. Thalamus
22. Ventriculus lat.
23. Splenium corporis callosi
24. Lobus occipitalis
25. Sinus sagittalis sup.

## Orbita, axialis MRI felvétel



1. Iris
2. Os zygomaticum
3. Lens
4. Corpus ciliare
5. Lig. palpebrale med.
6. Bulbus oculi (corpus vitreum)
7. M. rectus lateralis
8. N. opticus
9. M. rectus medialis
10. Os ethmoidale, lamina orbitalis
11. Corpus adiposum orbitae
12. Cellulae ethmoidales

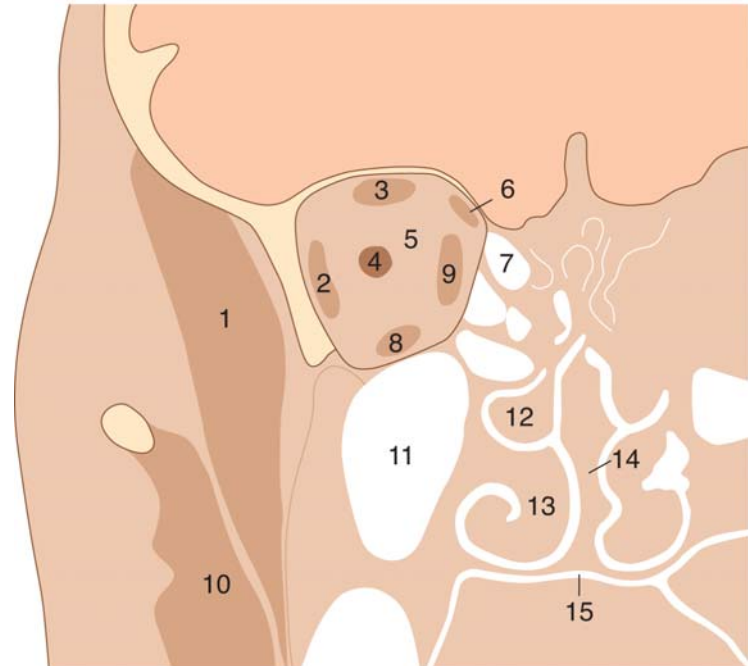
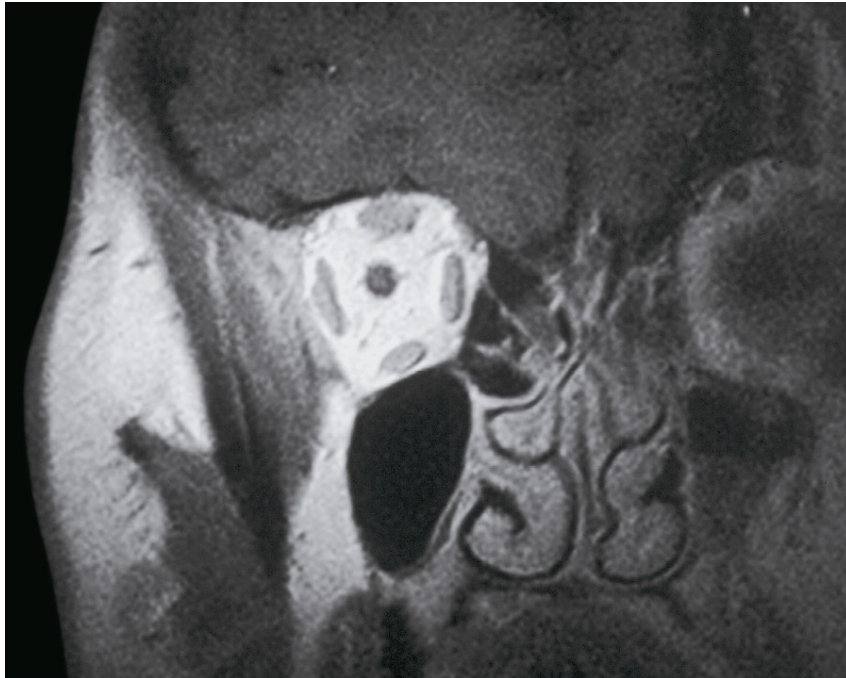
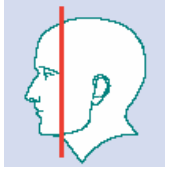
## Orbita, sagittalis MRI felvétel



1. Os frontale
2. Cerebrum
3. Palpebra superior
4. Tarsus
5. M. levator palpebrae sup. ína
6. Mm. rectus superior and levator palpebrae sup.
7. N. opticus
8. Camera anterior bulbi

9. Lens
10. Corpus ciliare
11. Corpus vitreum
12. Corpus adiposum orbitae
13. Palpebra inferior
14. M. rectus inferior
15. M. orbicularis oculi
16. M. obliquus inferior
17. Sinus maxillaris

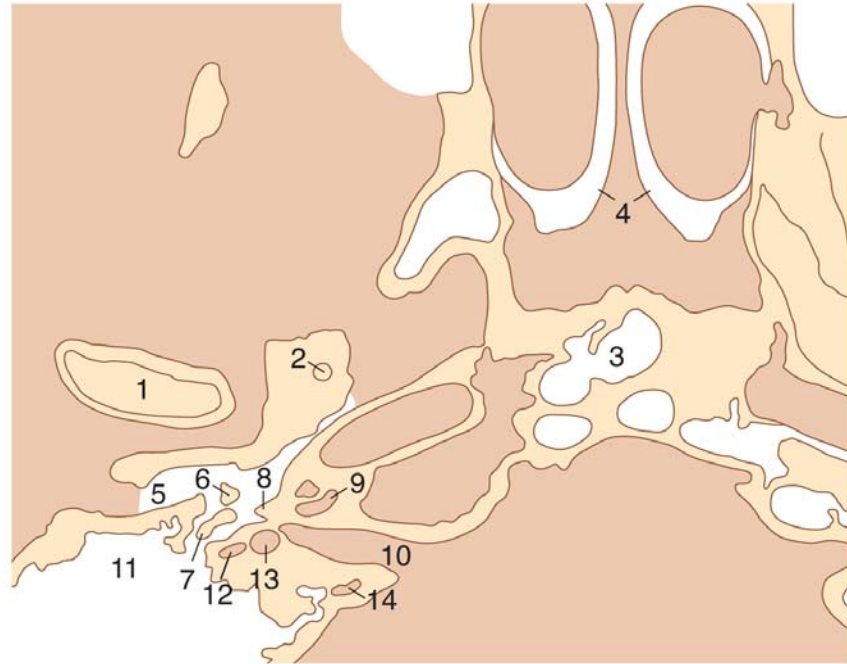
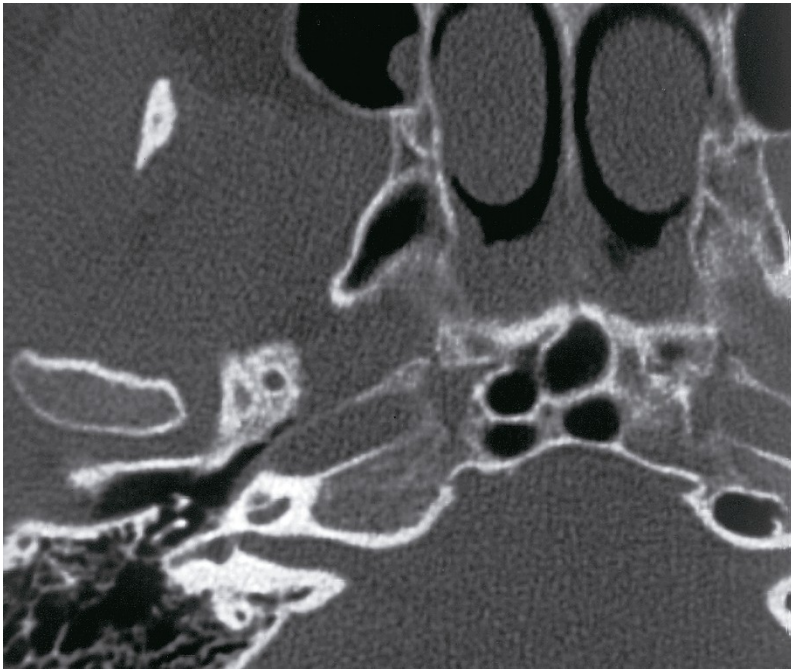
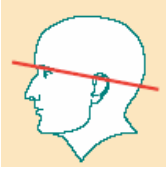
## Orbita, coronalis MRI felvétel



1. M. temporalis
2. M. rectus lat.
3. Mm. levator palpebrae sup. et rectus sup.
4. N. opticus
5. Corpus adiposum orbitae
6. M. obliquus sup.
7. Cellulae ethmoidales
8. M. rectus inf.

9. M. rectus med.
10. Arcus zygomaticus
11. M. masseter
12. Concha nasalis media
13. Concha nasalis inf.
14. Septum nasi
15. Palatum durum

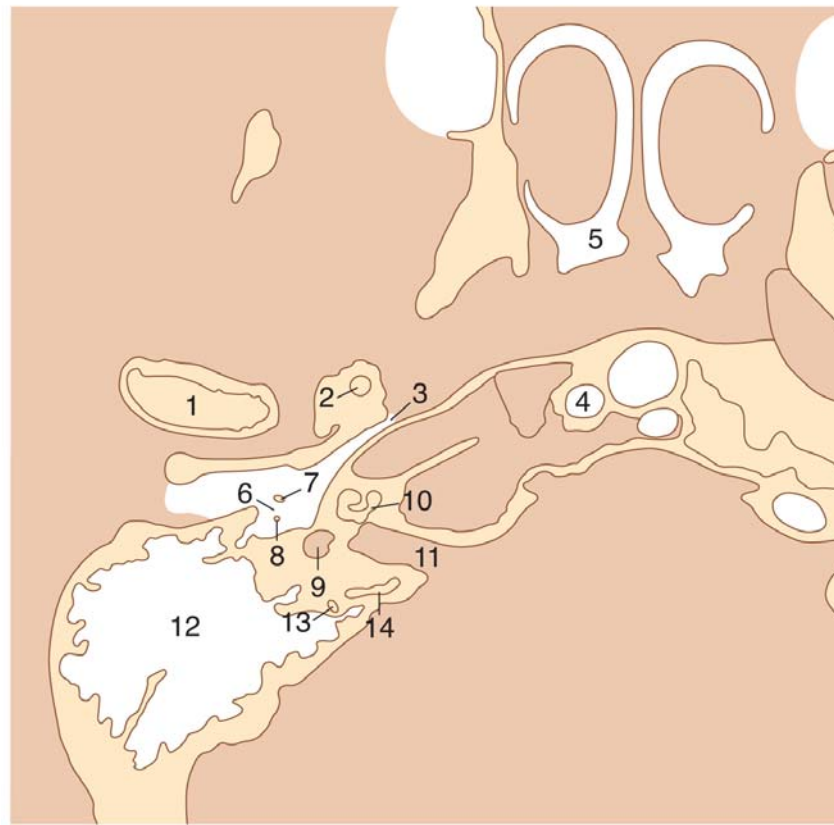
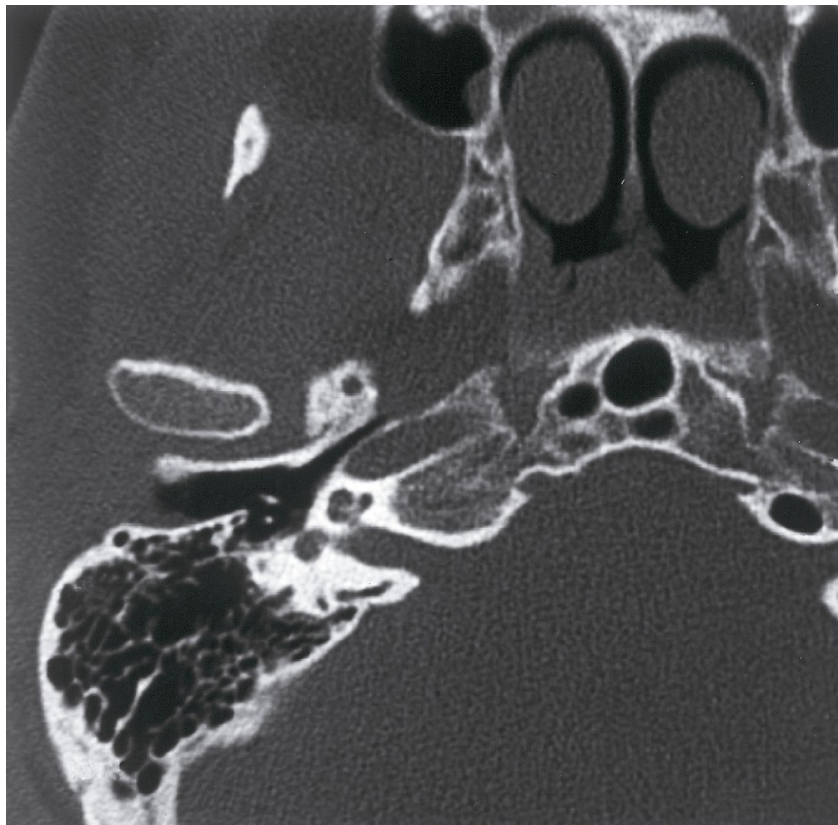
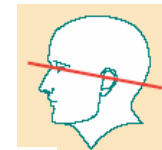
# Os temporale, pars petrosa, axialis CT felvétel / 1.



1. Caput mandibulae
2. Foramen spinosum
3. Sinus sphenoidalis
4. Cavum nasi
5. Meatus acusticus ext.
6. Malleus
7. Incus

8. Eminentia pyramidalis
9. Cochlea
10. Meatus acusticus int.
11. Cellulae mastoideae
12. Canalis N. facialis
13. Vestibulum
14. Canalis semicircularis post.

## Os temporale, pars petrosa, axialis CT felvétel / 2.



1. Caput mandibulae
2. Foramen spinosum
3. Tuba auditiva
4. Sinus sphenoidalis
5. Cavum nasi
6. Cavum tympani
7. Malleus

8. Incus
9. Vestibulum
10. Cochlea
11. Meatus acusticus int.
12. Cellulae mastoideae
13. Canalis semicircularis lat.
14. Canalis semicircularis post.