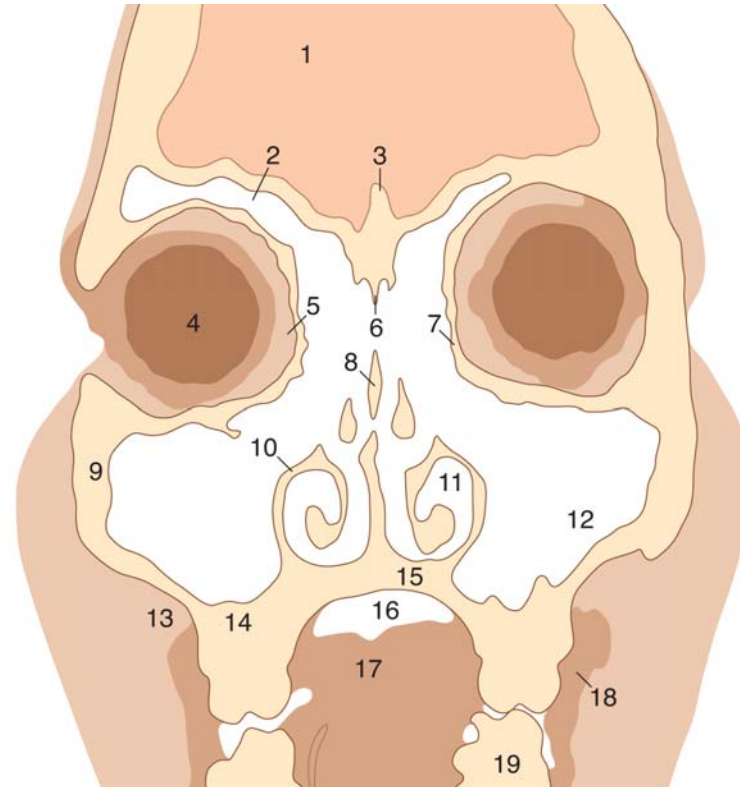
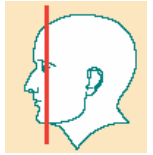




Orvosi képző eljárások

Viscerocranium - Collum

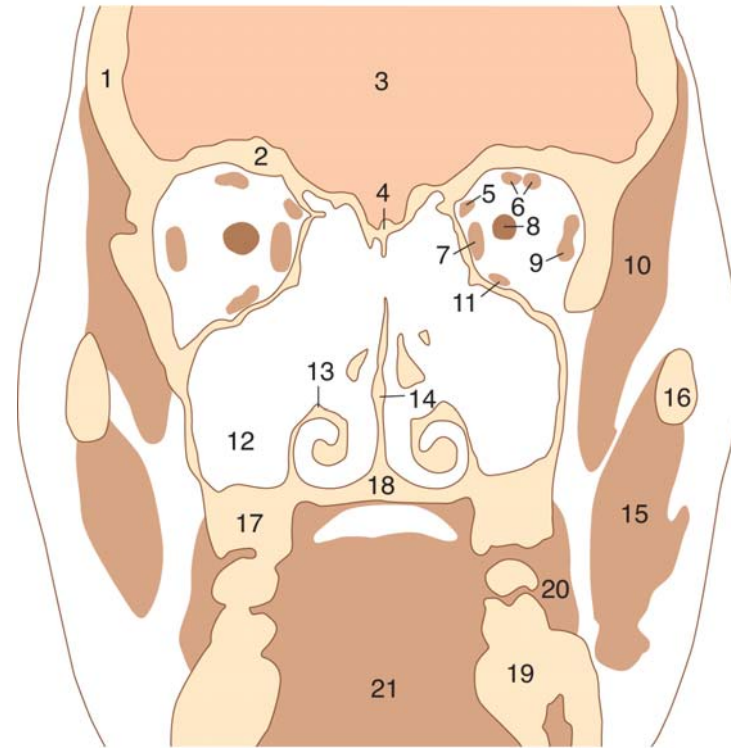
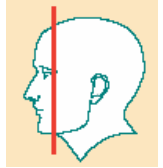
Feji keresztmetszet, coronalis CT felvétel / 1.



1. Agy
2. Sinus frontalis (supraorbitalisan kiterjedt)
3. Crista galli
4. Bulbus oculi
5. Corpus adiposum orbitae
6. Lamina perpendicularis ossis ethmoidalis
7. Lamina orbitalis
8. Septum nasi
9. Corpus maxillae
10. Concha nasalis inf.

11. Meatus nasi inf.
12. Sinus maxillaris (Highmore üreg)
13. Corpus adiposum buccae
14. Processus alveolaris maxillae
15. Palatum durum
16. Cavum oris
17. Lingua
18. M. buccinator
19. Arcus dentalis inf.

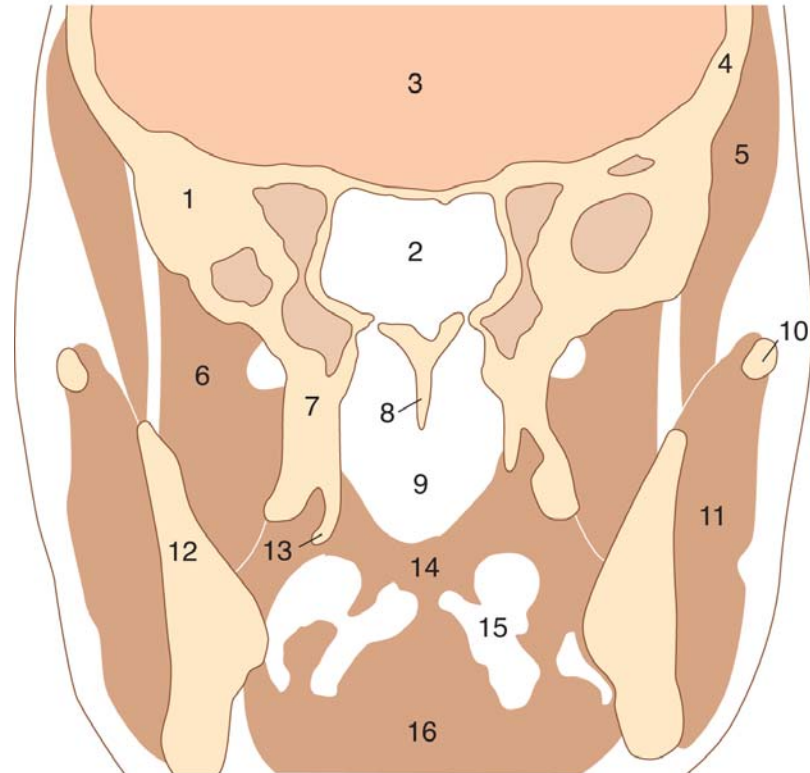
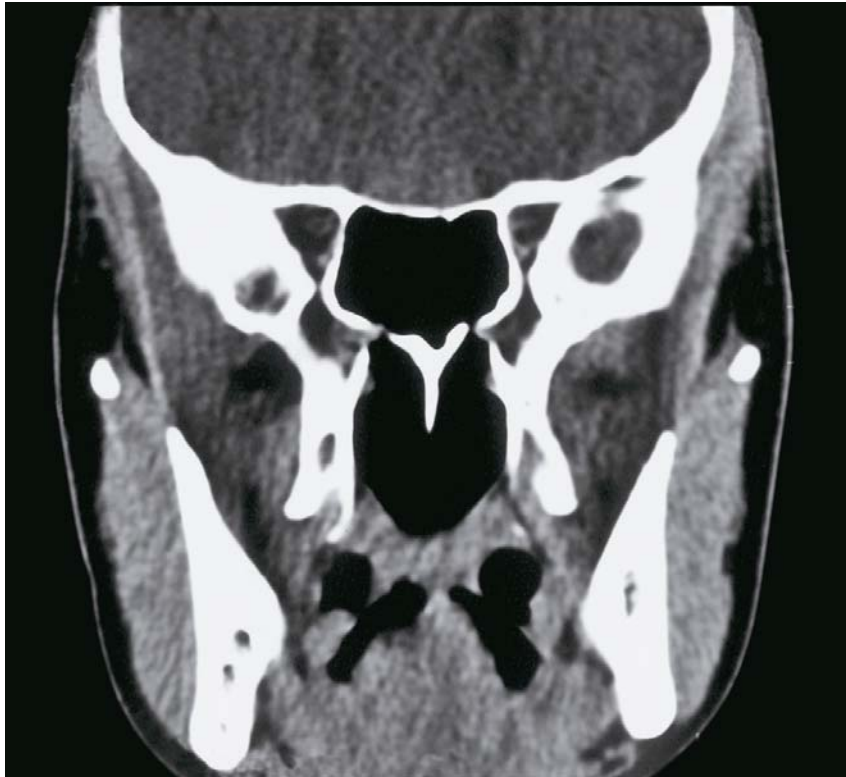
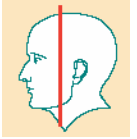
Feji keresztmetszet, coronalis CT felvétel / 2.



1. Squama frontalis
2. Pars orbitalis ossis frontalis
3. Cerebrum
4. Crista galli, os ethmoidale
5. M. obliquus sup.
6. Mm. rectus sup. et levator palpebrae sup.
7. M. rectus med.
8. N. opticus
9. M. rectus lat.
10. M. temporalis
11. M. rectus inf.

12. Sinus maxillaris
13. Concha nasalis inf.
14. Septum nasi
15. M. masseter
16. Arcus zygomaticus
17. Proc. alveolaris maxillae
18. Palatum durum
19. Proc. alveolaris mandibulae
20. M. buccinator
21. Lingua

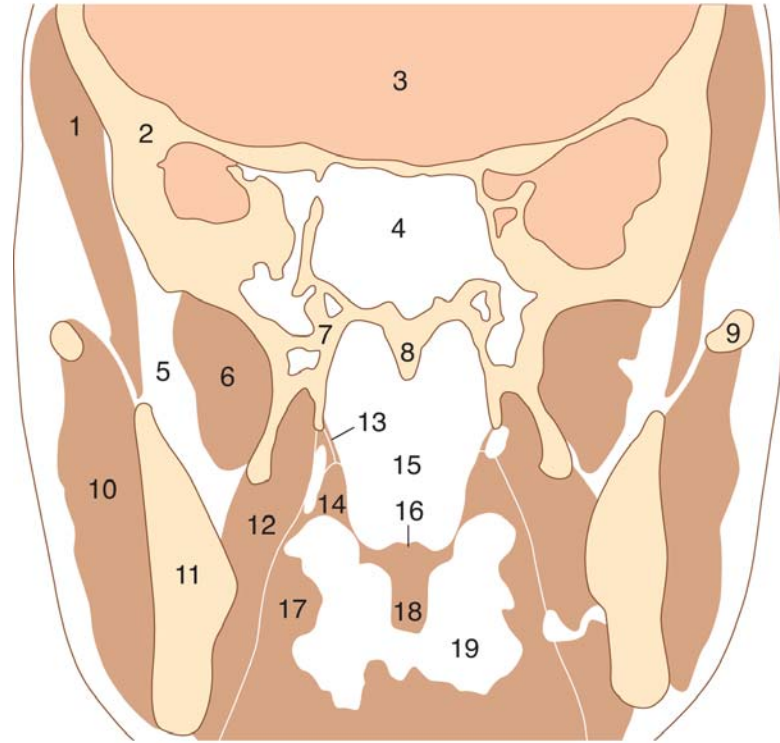
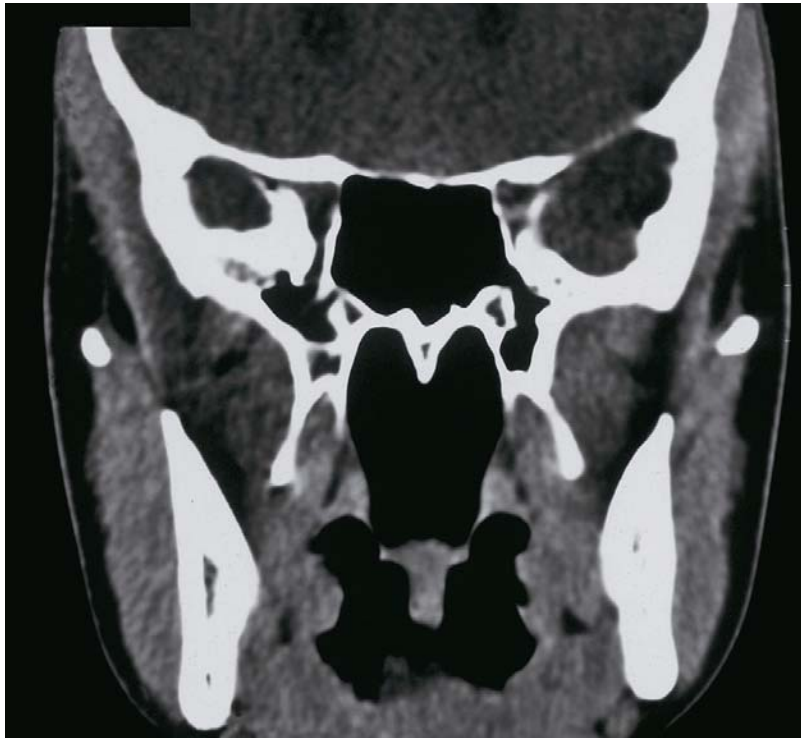
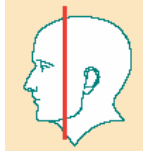
Feji keresztmetszet, coronalis CT felvétel / 3.



1. Ala major
2. Sinus sphenoidalis
3. Cerebrum
4. Squama temporalis
5. M. temporalis
6. Fossa infratemporalis
7. Proc. pterygoideus
8. Vomer

9. Nasopharynx
10. Arcus zygomaticus
11. M. masseter
12. Mandibula
13. Hamulus pterygoideus
14. Palatum molle
15. Cavum oris
16. Lingua

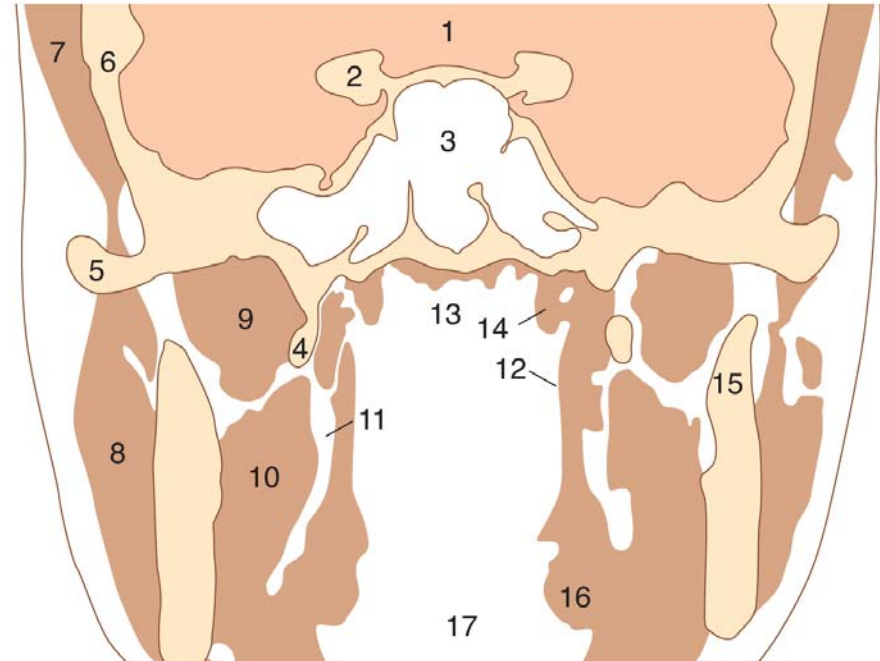
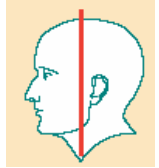
Feji keresztmetszet, coronalis CT felvétel / 4.



1. M. temporalis
2. Ala major
3. Cerebrum
4. Sinus sphenoidalis
5. Fossa infratemporalis
6. M. pterygoid. lat.
7. Proc. pterygoideus
8. Vomer
9. Arcus zygomaticus
10. M. masseter

11. Mandibula
12. M. pterygoideus med.
13. M. levator veli palatini
14. M. tensor veli palatini
15. Nasopharynx
16. Palatum molle
17. Tonsilla palatina
18. Uvula
19. Cavum oris

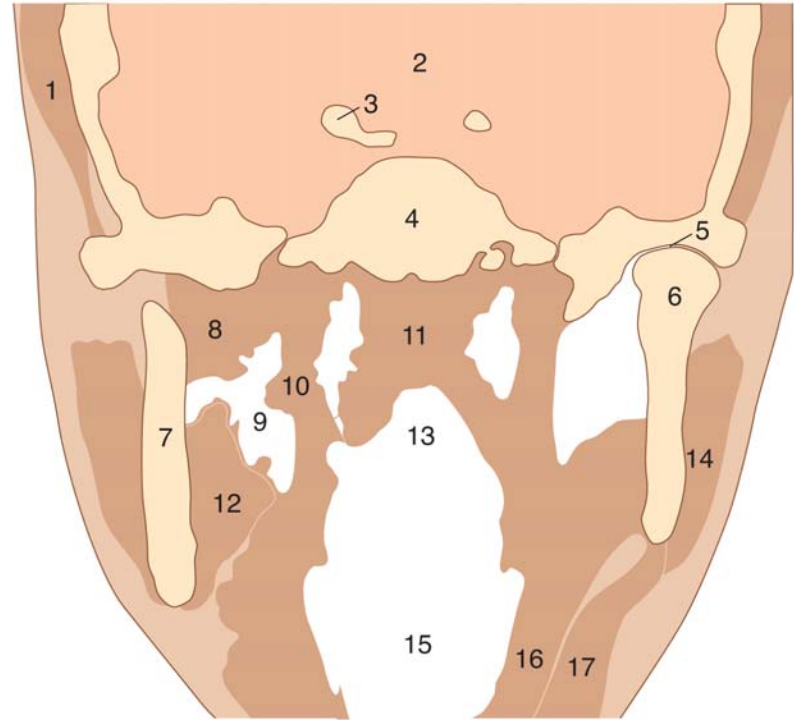
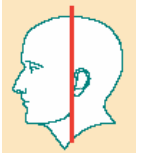
Feji keresztmetszet, coronalis CT felvétel / 5.



1. Cerebrum
2. Proc. clinoideus ant.
3. Sinus sphenoidalis
4. Proc. pterygoideus
5. Arcus zygomaticus
6. Squama temporalis
7. M. temporalis
8. M. masseter
9. M. pterygoideus lat.

10. M. pterygoideus med.
11. Spatium parapharyngeum
12. M. constrictor pharyngis sup.
13. Nasopharynx
14. Torus tubarius
15. Ramus mandibulae
16. Tonsilla palatina
17. Oropharynx

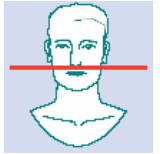
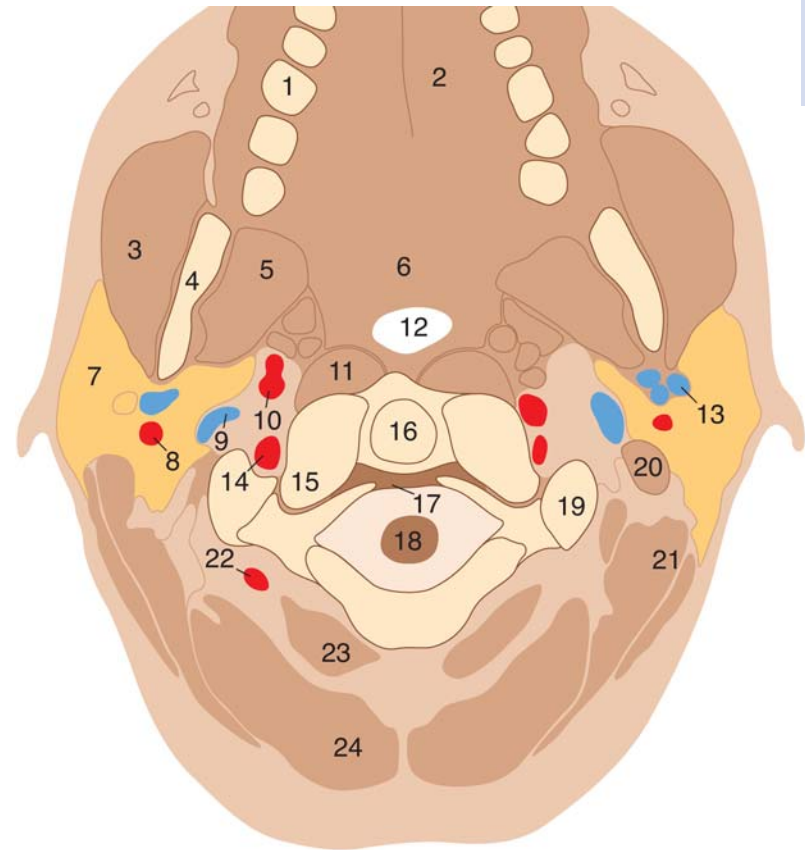
Feji keresztmetszet, coronalis CT felvétel / 6.



- 1. M. temporalis
- 2. Cerebrum
- 3. Proc. clinoides ant.
- 4. Corpus ossis sphenoidalis
- 5. Art. temporomandibularis
- 6. Proc. condylaris mandibulae
- 7. Ramus mandibulae
- 8. M. pterygoid. lat.
- 9. Spatium parapharyngeum

- 10. M. constrictor pharyng. sup.
- 11. Paries dors. nasopharyngis
- 12. M. pterygoid. med.
- 13. Nasopharynx
- 14. M. masseter
- 15. Oropharynx
- 16. M. mylohyoideus
- 17. M. digastricus

Feji keresztmetszet, axialis MRI felvétel

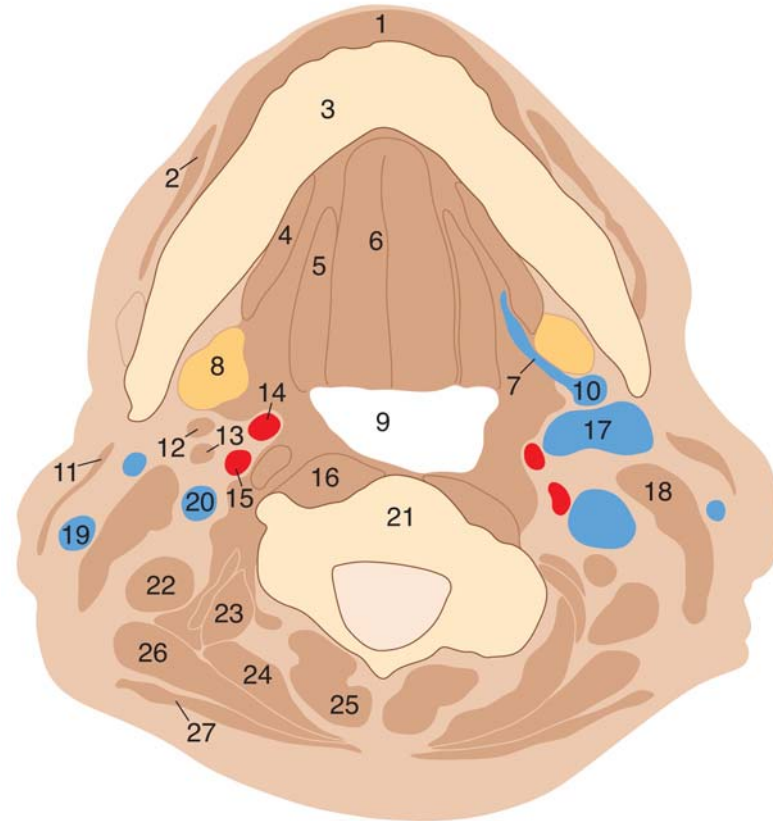
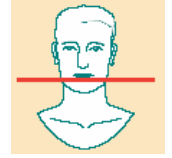


1. Arcus dentalis sup.
2. Palatum durum
3. M. masseter
4. Ramus mandibulae
5. M. pterygoideus med.
6. Palatum molle
7. Gl. parotis (lob. supf.)
8. A. carotis ext.

9. V. jugularis int.
10. A. carotis int.
11. Mm. longi colli et capitis
12. Nasopharynx
13. V. retromandibularis
14. A. vertebralis
15. Facies artic. sup. atlantis
16. Dens axis

17. Lig. transversum atlantis
18. Medulla spinalis
19. Massa lateralis atlantis
20. Venter post. m. digastrici
21. Mm. sternocleidomastoideus et splenius capitis
22. A. et v. cervicales proff.
23. Mm. suboccipitales
24. M. semispinalis capitis

Nyaki keresztmetszet, axialis CT felvétel / 1.

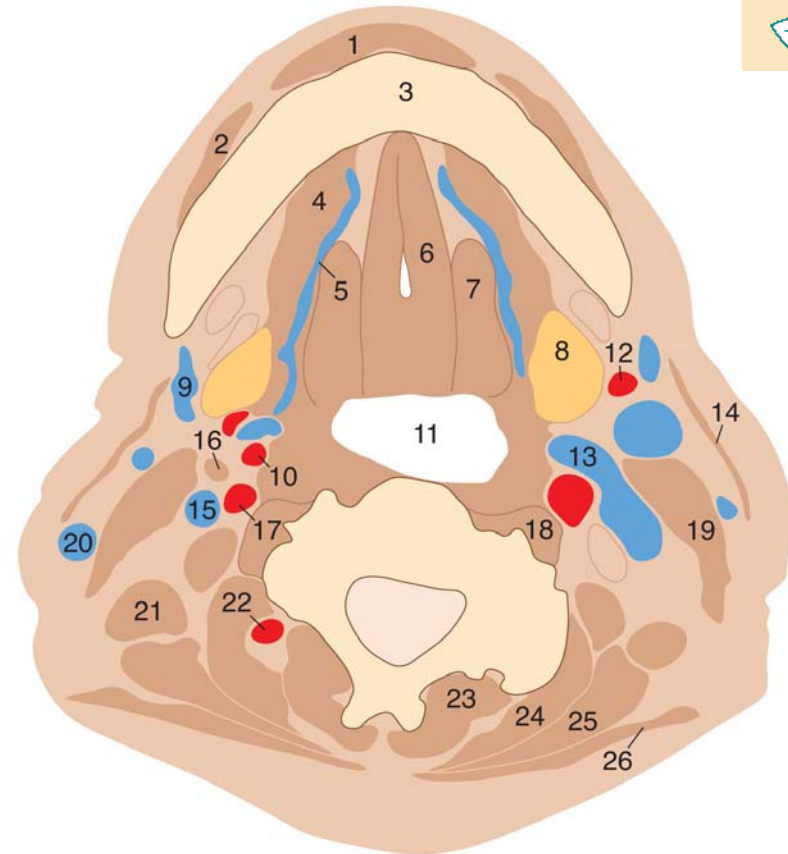
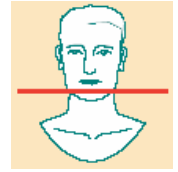


1. M. mentalis
2. M. depressor anguli oris
3. Mandibula
4. M. mylohyoideus
5. M. hyoglossus
6. M. genioglossus
7. V. sublingualis
8. Gl. submandibularis
9. Oropharynx

10. V. facialis
11. Platysma
12. M. stylohyoideus
13. Venter post. m. digastrici
14. A. carotis ext.
15. A. carotis int.
16. Mm. longi colli et capitis
17. V. retromandibularis
18. M. sternocleidomastoideus

19. V. jugularis ext.
20. V. jugularis int.
21. Vertebra cervicalis
22. M. levator scapulae
23. Mm. longiss. capit. et cerv.
24. M. semispinalis capitis
25. M. semispinalis cervicis
26. M. splenius capitis
27. M. trapezius

Nyaki keresztmetszet, axialis CT felvétel / 2.

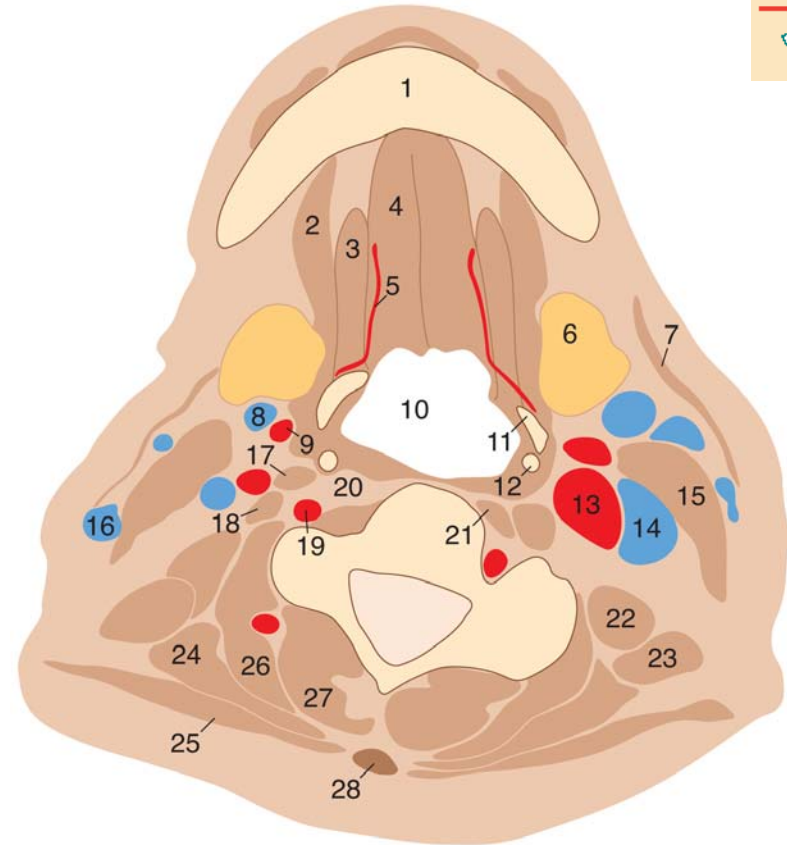
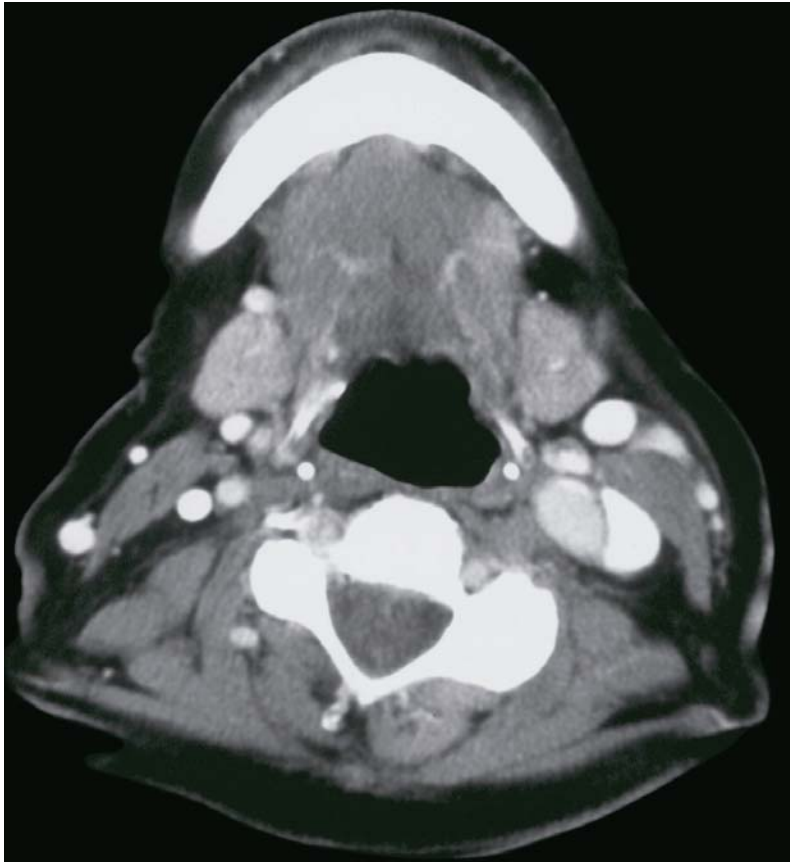
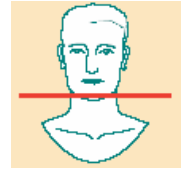


1. M. mentalis
2. M. depressor angulis oris
3. Mandibula
4. M. mylohyoideus
5. V. sublingualis, sulcus lateralis linguae
6. M. genioglossus
7. M. hyoglossus
8. Gl. submandibularis
9. V. facialis

10. A. carotis ext.
11. Oropharynx
12. A. facialis
13. V. facialis communis
14. Platysma
15. V. jugularis int.
16. M. stylohyoideus
17. A. carotis int.
18. Mm. longi capitis et colli

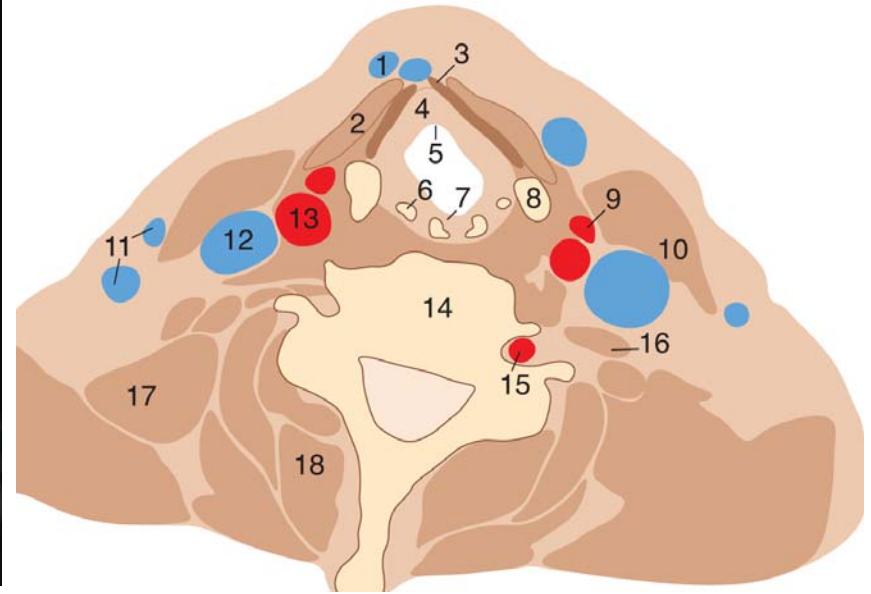
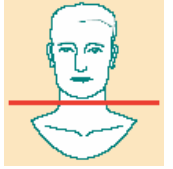
19. M. sternocleidomast.
20. V. jugularis ext.
21. M. levator scapulae
22. A. cervic. prof.
23. M. semispin. cerv.
24. M. semispin. capit.
25. M. splenius capitis
26. M. trapezius

Nyaki keresztmetszet, axialis CT felvétel / 3.



- | | | |
|------------------------|---------------------------------|--|
| 1. Mandibula | 10. Oropharynx | 19. A. vertebralis |
| 2. M. mylohyoideus | 11. Os hyoideum | 20. Spatium retropharyngeum |
| 3. M. hyoglossus | 12. Cart. thyroidea, cornu sup. | 21. Mm. longi capitis et colli |
| 4. M. genioglossus | 13. A. carotis int. | 22. M. scalenus post. |
| 5. A. lingualis | 14. V. jugularis int. | 23. M. levator scapulae |
| 6. Gl. submandibularis | 15. M. sternocleidomastoideus | 24. M. splenius capitis |
| 7. Platysma | 16. V. jugularis ext. | 25. M. trapezius |
| 8. V. facialis | 17. M. scalenus ant. | 26. Mm. longissimi et semispin. capit. |
| 9. A. carotis ext. | 18. M. scalenus medius | 27. M. semispinalis cervicis |
| | | 28. Lig. nuchae |

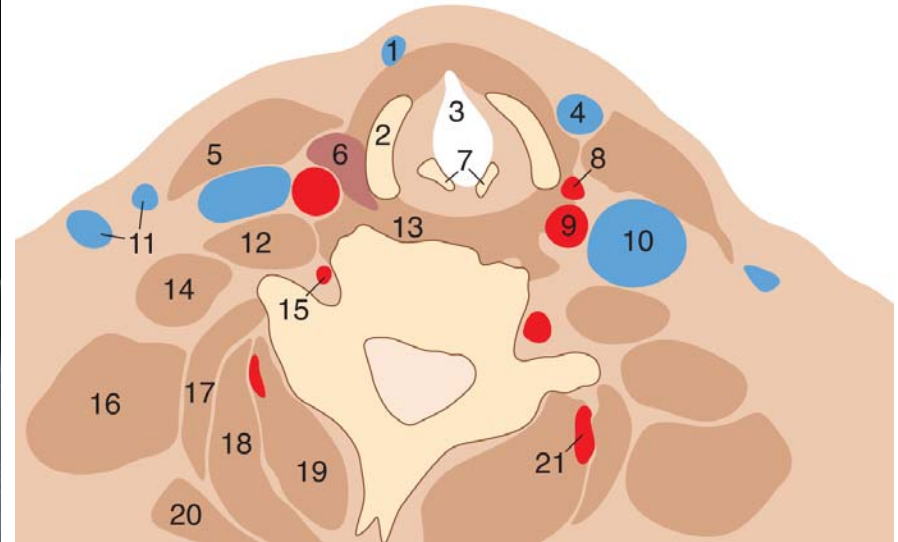
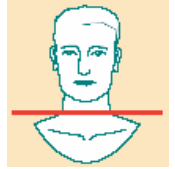
Nyaki keresztmetszet, axialis CT felvétel / 4.



1. V. jugularis ant.
2. Mm. infrahyoidei
3. Membrana thyrohyoidea
4. Corpus adiposum laryngis
5. Epiglottis
6. Cartilago cuneiformis
7. Cartilago corniculata
8. Cartilago thyroidea
9. A. thyroidea sup.

10. M. sternocleidomastoideus
11. V. jugularis ext.
12. V. jugularis int.
13. A. carotis comm.
14. Vertebra cervicalis V.
15. A. vertebralis
16. M. scalenus medius
17. M. levator scapulae
18. M. erector spinae

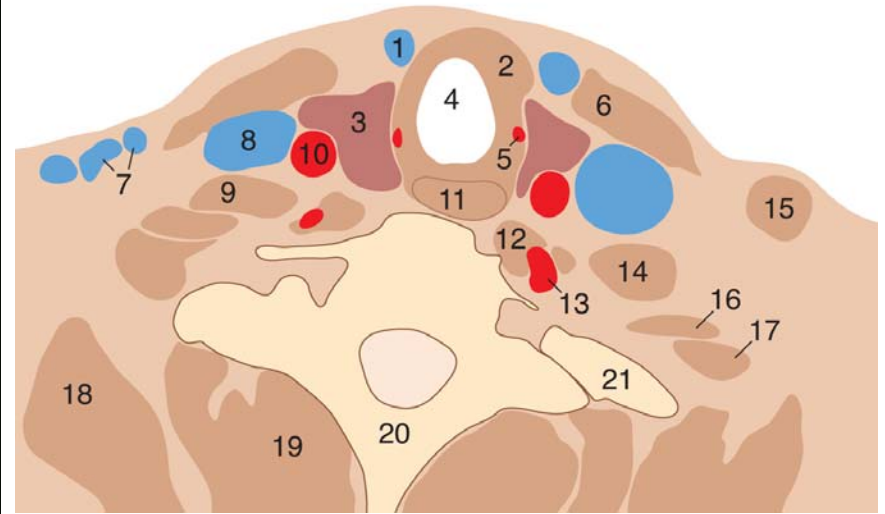
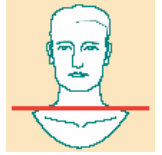
Nyaki keresztmetszet, axialis CT felvétel / 5.



1. V. jugularis ant.
2. Cartilago thyroidea
3. Vestibulum laryngis
4. V. facialis communis
5. M. sternocleidomastoideus
6. Gl. thyroidea
7. Cartilago arytenoidea
8. A. thyroidea sup.
9. A. carotis comm.
10. V. jugularis int.

11. V. jugularis ext.
12. M. scalenus medius
13. Laryngopharynx
14. M. scalenus post.
15. A. vertebralis
16. M. levator scapulae
17. M. longissimus cervicis
18. Mm. semispinales
19. M. erector spinae
20. M. splenius capitis
21. Vasa cervicalia profunda

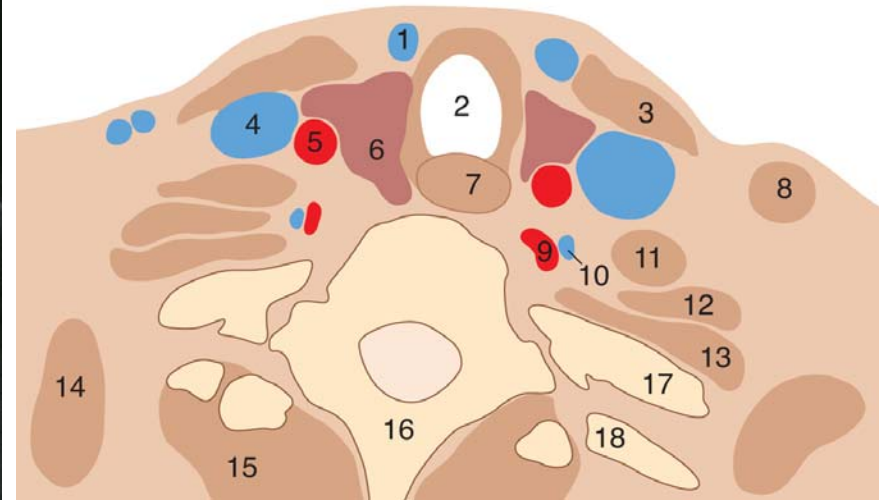
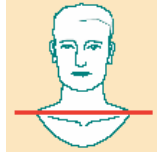
Nyaki keresztmetszet, axialis CT felvétel / 6.



1. V. jugularis ant.
2. Trachea et mm. infrahyoidei
3. Gl. thyroidea
4. Trachea, lumen
5. A. laryngea inf.
6. M. sternocleidomastoideus, insertio sternalis
7. V. jugularis ext.
8. V. jugularis int.
9. M. scalenus ant.
10. A. carotis comm.
11. Oesophagus

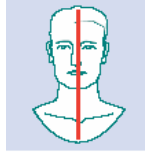
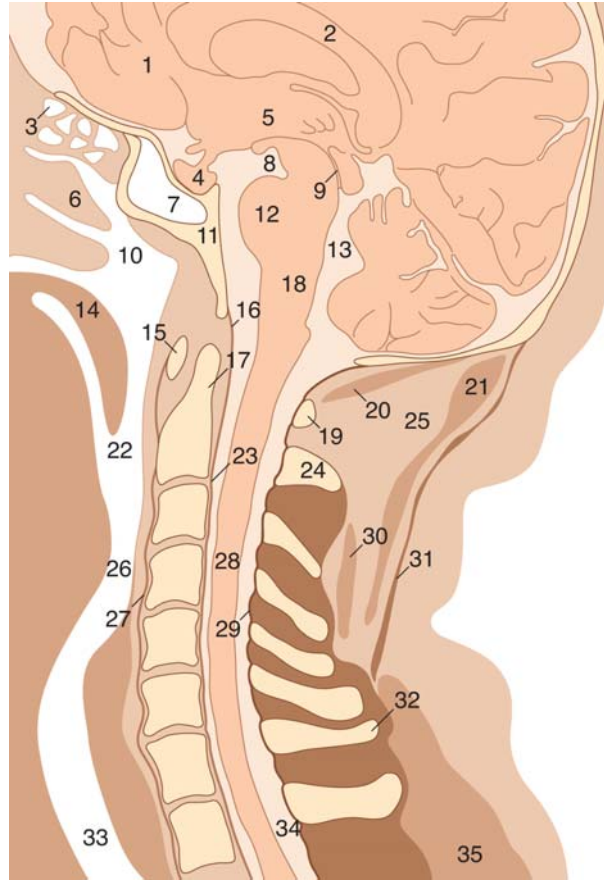
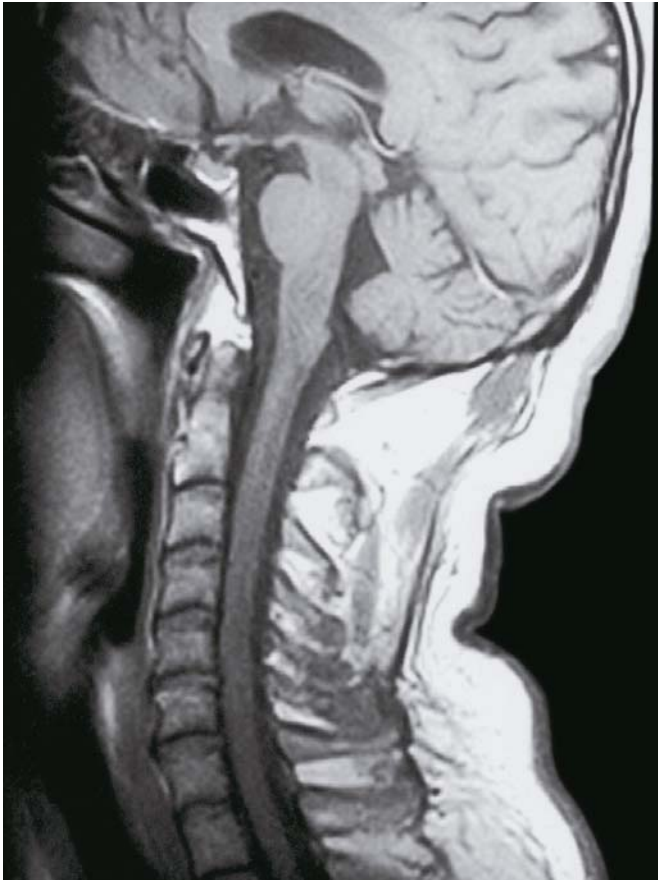
12. M. longus colli
13. A. vertebralis
14. M. scalenus ant.
15. M. sternocleidomastoideus, insertio clavicularis
16. M. scalenus medius
17. M. scalenus post.
18. M. levator scapulae
19. M. erector spinae
20. Vertebra thoracica I., lamina et proc. spinosus
21. I. borda

Nyaki keresztmetszet, axialis CT felvétel / 7.



1. V. jugularis ant.
2. Trachea
3. M. sternocleidomastoideus, insertio sternalis
4. V. jugularis int.
5. A. carotis comm.
6. Gl. thyroidea
7. Oesophagus
8. M. sternocleidomastoideus, insertio clavicularis
9. A. vertebralis
10. V. vertebralis
11. M. scalenus ant.
12. M. scalenus medius
13. M. scalenus post.
14. M. levator scapulae
15. M. erector spinae
16. Vertebra thoracica I.
17. I. borda
18. II. borda

Fej – nyak, sagittalis MRI felvétel

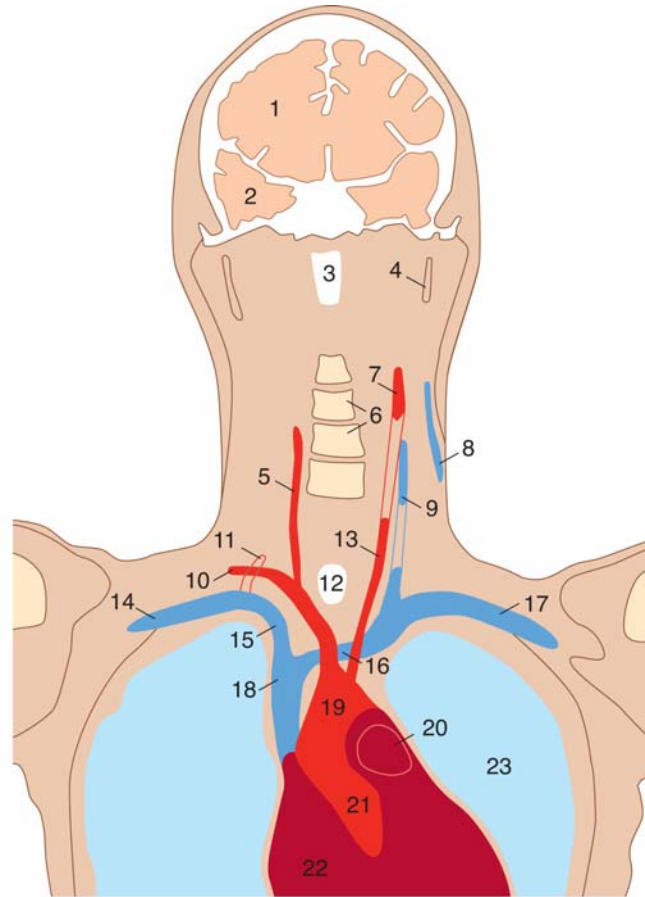


1. Agy, lobus frontalis
2. Corpus callosum
3. Cellulae ethmoidales
4. Hypophysis
5. III. agykamra
6. Orrüreg
7. Sinus sphenoidalis
8. Fossa interpeduncularis
9. Aqueductus cerebri, mesencephalon
10. Nasopharynx
11. Clivus
12. Pons
13. IV. agykamra
14. Palatum molle
15. Atlas, arcus ant.
16. Membrana tectoria
17. Dens axis
18. Medulla oblongata
19. Atlas, arcus post.
20. M. rectus capitis post. minor

21. M. semispinalis capitis
22. Oropharynx
23. Lig. longitudinale post.
24. Axis, proc. spinosus
25. Suboccipitalis zsírszövet
26. Laryngopharynx
27. Lig. longitudinale ant.

28. Medulla spinalis
29. Ligamenta flava
30. M. semispinalis cervicis
31. Lig. nuchae
32. Vertebra cervicalis VII., proc. spinosus
33. Trachea
34. Spatium subarachnoideale (theca)
35. M. erector spinae

Fej – nyak, coronalis MRI felvétel / 1.

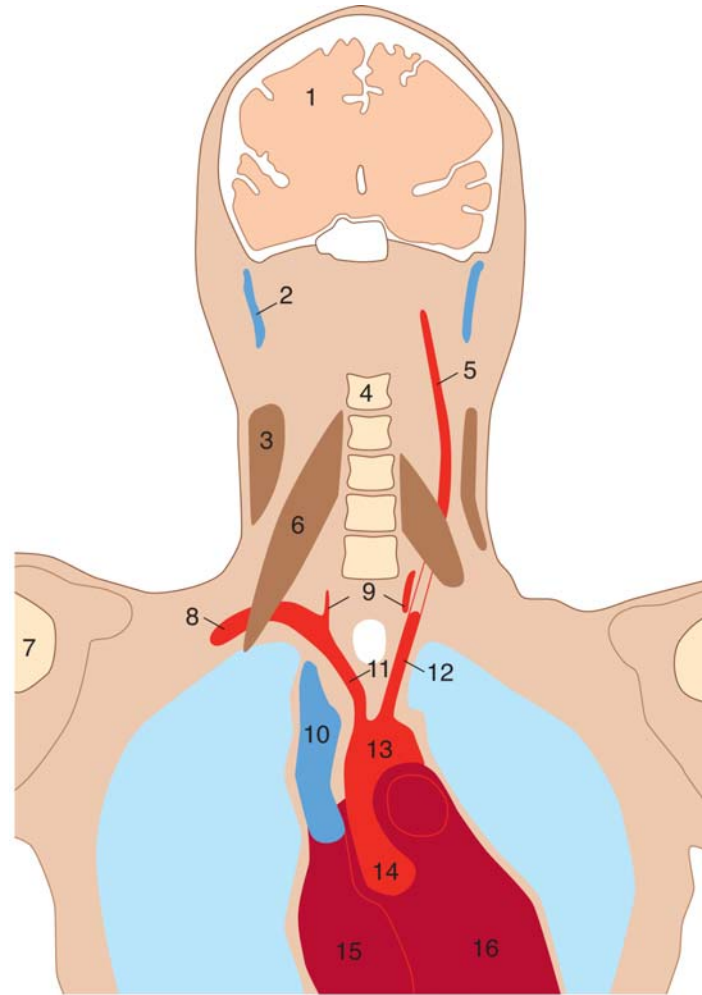


1. Agy, lobus parietalis
2. Agy, lobus temporalis
3. Nasopharynx
4. Ramus mandibulae
5. A. carotis comm. dextra
6. Vertebrae cervicales
7. A. carotis int. sin.
8. V. jugularis ext.

9. V. jugularis int.
10. A. subclavia dextra
11. M. scalenus ant. tapadása
12. Trachea
13. A. carotis comm. sin.
14. V. subclavia dext.
15. V. brachiocephalica dext.
16. V. brachiocephalica sin.

17. V. subclavia sin.
18. V. cava sup.
19. Arcus aortae
20. A. pulmonalis
21. Aorta ascendens
22. Szív
23. Tüdő

Fej – nyak, coronalis MRI felvétel / 2.

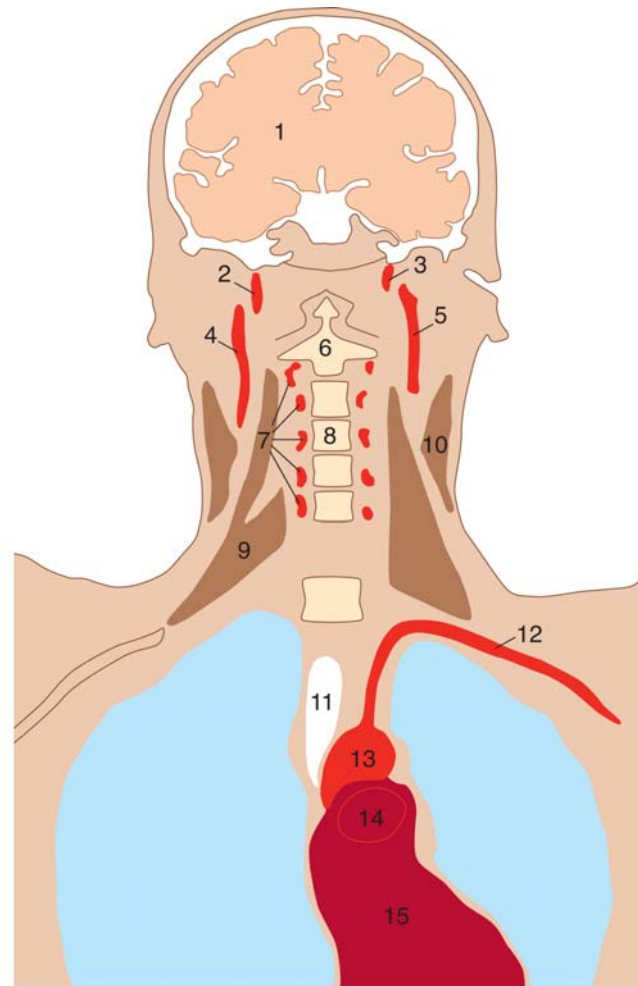


1. Agy
2. V. retromandibularis
3. M. sternocleidomastoideus
4. Vertebra cervicalis
5. A. carotis int
6. M. scalenus ant.

7. A. carotis int. sin.
8. A. subclavia dext.
9. A. vertebralis
10. V. cava sup.
11. Truncus brachiocephalicus

12. A. carotis comm. sin.
13. Arcus aortae
14. Aorta ascendens
15. Atrium dextrum
16. Ventriculus sinister

Fej – nyak, sagittalis MRI felvétel / 3.



1. Agy
2. A. vertebralis dext.
3. A. vertebralis sin.
4. A. carotis int. dext.
5. A. carotis int. sin.

6. Dens axis
7. A. vertebralis
8. Vertebra cervicalis IV.
9. M. scalenus medius et post.
10. M. sternocleidomastoideus

11. Trachea
12. A. subclavia sin.
13. Arcus aortae
14. A. pulmonalis
15. Szív