

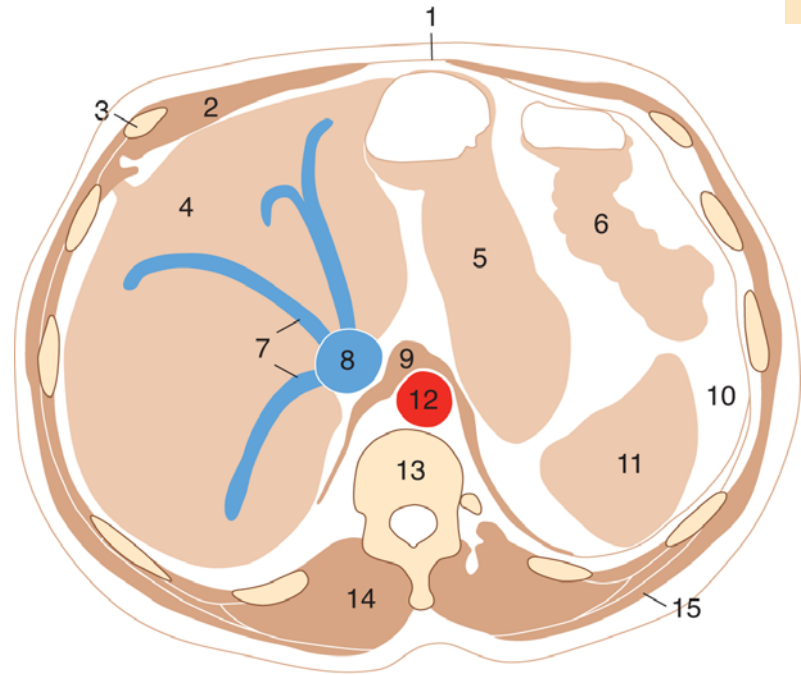
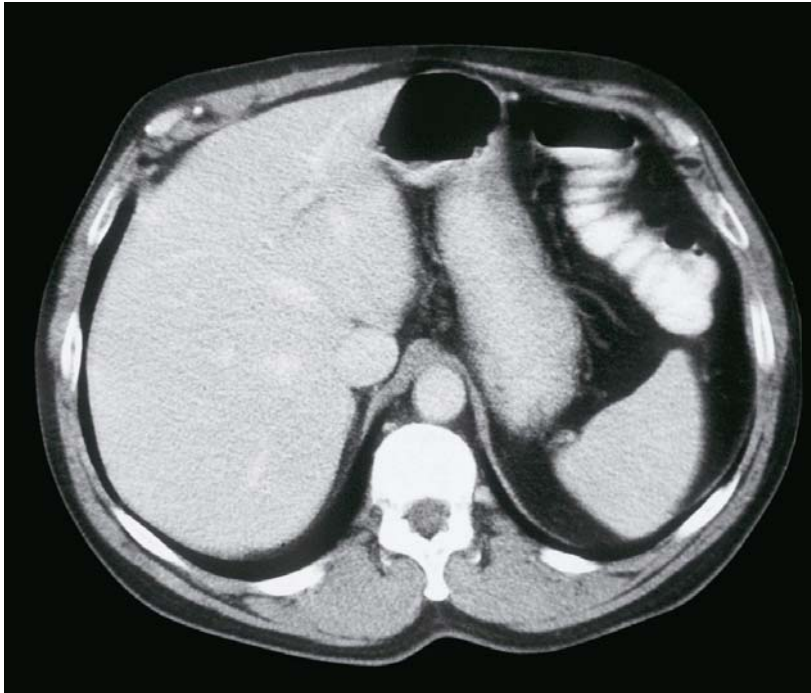
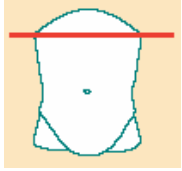


Semmelweis Egyetem, Anatómiai, Szövet- és Fejlődéstani Intézet

Orvosi képző eljárások

Abdomen

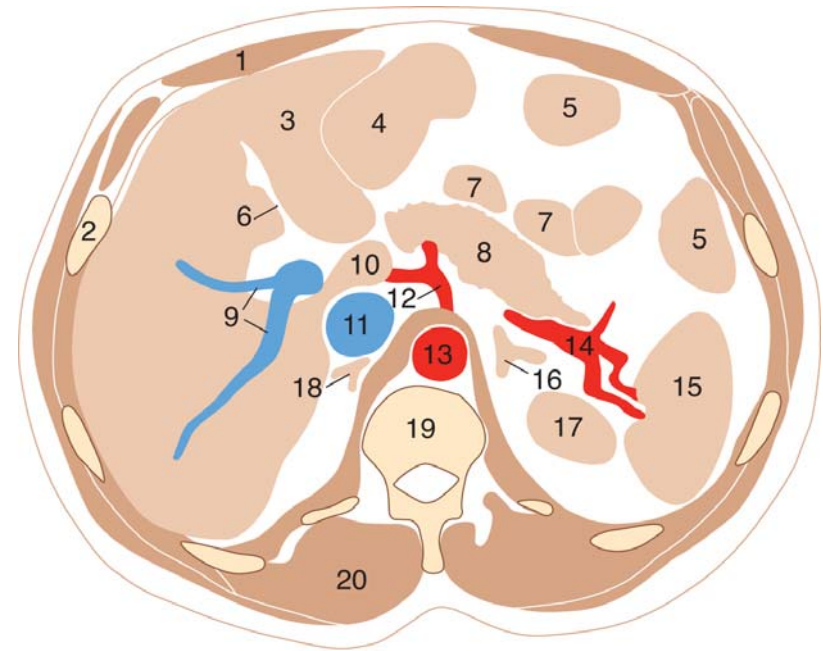
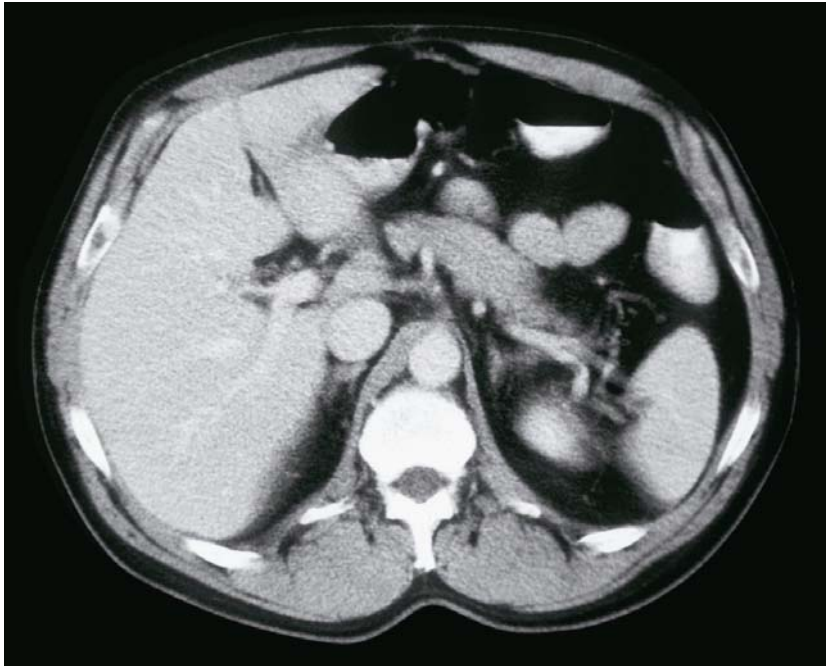
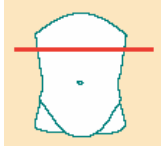
Abdomen, axialis CT felvétel / 1.



1. Linea alba
2. Rectus hüvely/M. rectus abdominis
3. Costa
4. Hepar
5. Gaster
6. Colon
7. Venae hepaticae
8. Vena cava inf.

9. Crura diaphragmatis (lig. arcuatum med.)
10. Spatium subphrenicum sin.
11. Lien
12. Aorta
13. Vertebra thoracica XI
14. M. erector spinae
15. M. latissimus dorsi

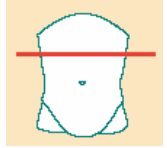
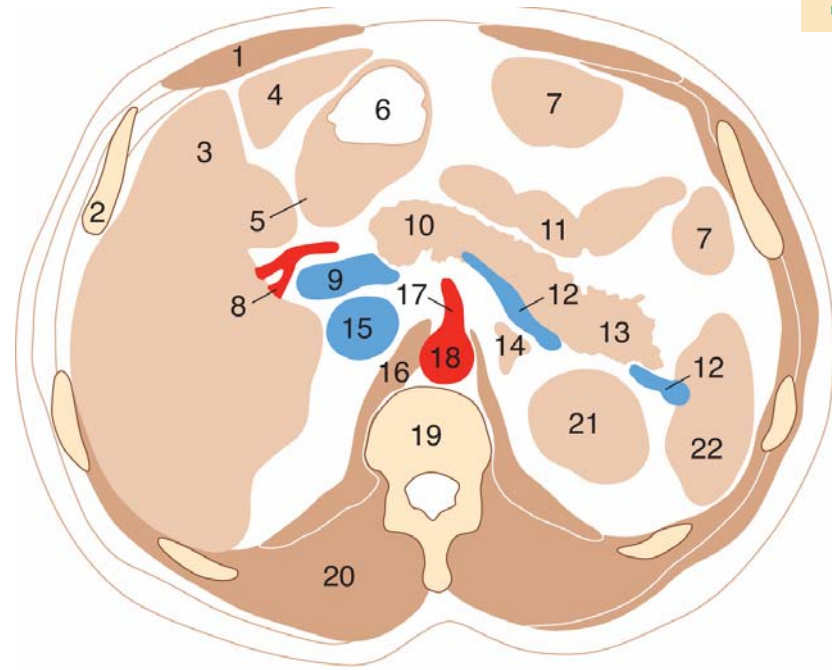
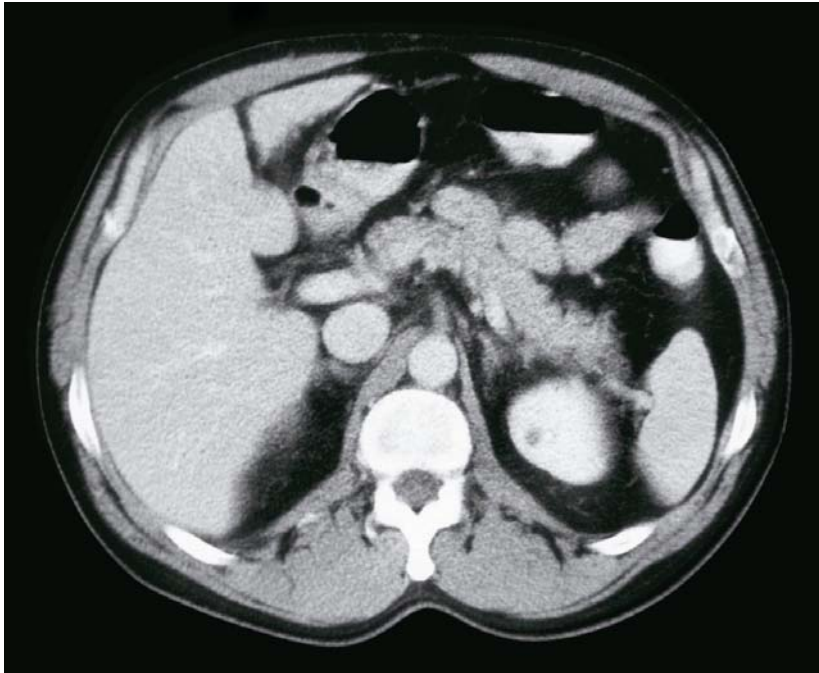
Abdomen, axialis CT felvétel / 2.



1. Rectus hüvely/M. rectus abdominis
2. Costa
3. Hepar
4. Gaster
5. Colon
6. Lig. teres hepatis /fissura lig. falciformis
7. Jejunum
8. Corpus pancreatis
9. Vena portae, rr. lobares
10. Lobus caudatus

11. V. cava inf.
12. Truncus coeliacus oszlása (a. hepatica comm. et gastrica sin.)
13. Aorta
14. A. lienalis
15. Lien
16. Gl. suprarenalis sin.
17. Ren sinister
18. Gl. suprarenalis dext. (area nuda mellett)
19. Vertebra thoracica XII.
20. M. erector spinae

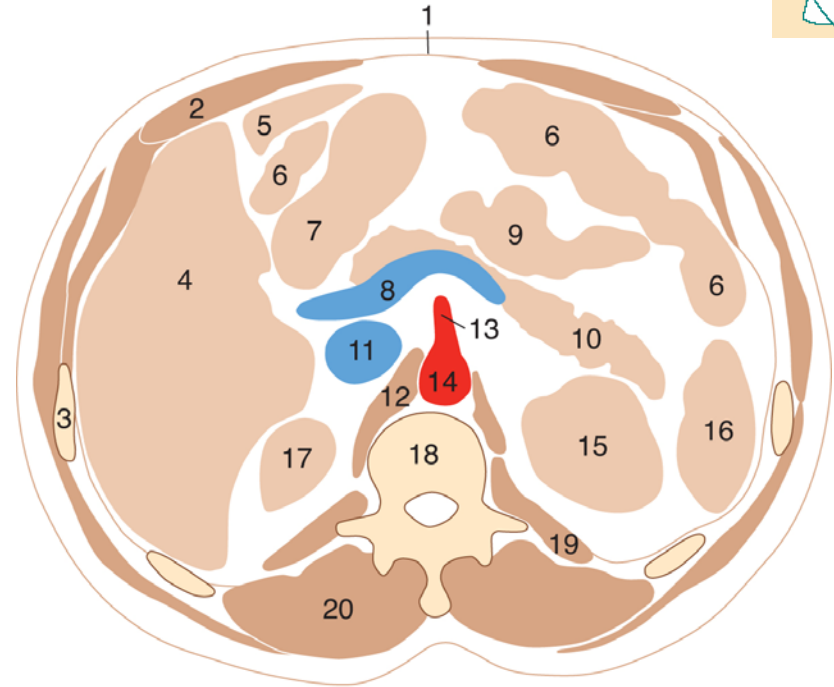
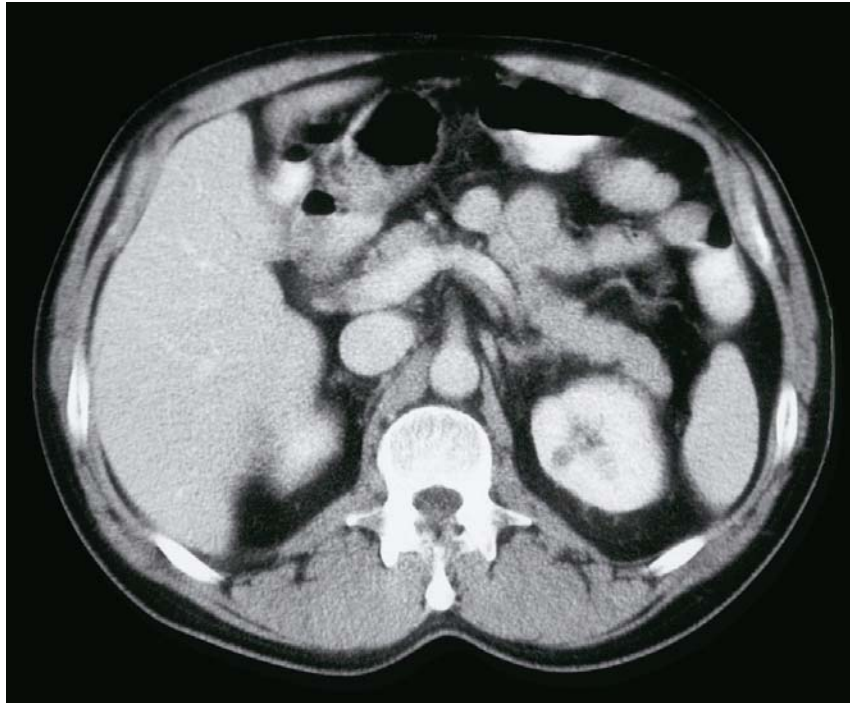
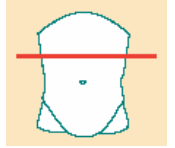
Abdomen, axialis CT felvétel / 3.



1. Rectus hüvely/M. rectus abdominis
2. Costa
3. Lobus sin. hepatis, segmentum med. IV.
4. Lobus sin. hepatis, segmenta latt. II-III.
5. Duodenum
6. Gaster (antrum)
7. Colon
8. Art. hepatica
9. V. portae
10. Pancreas (collum)
11. Jejunum

12. V. lienalis
13. Cauda pancreatis
14. Gl. suprarenalis sin.
15. V. cava inf.
16. Crus diaphragmatis
17. A. mesenterica sup.
18. Aorta
19. Vertebra thorac. XII.
20. M. erector spinae
21. Ren sinister
22. Lien

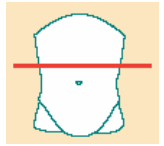
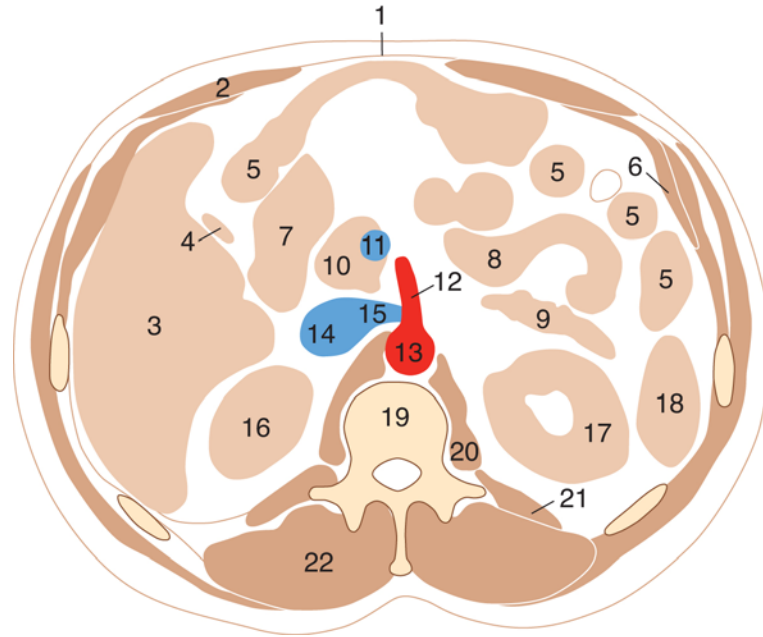
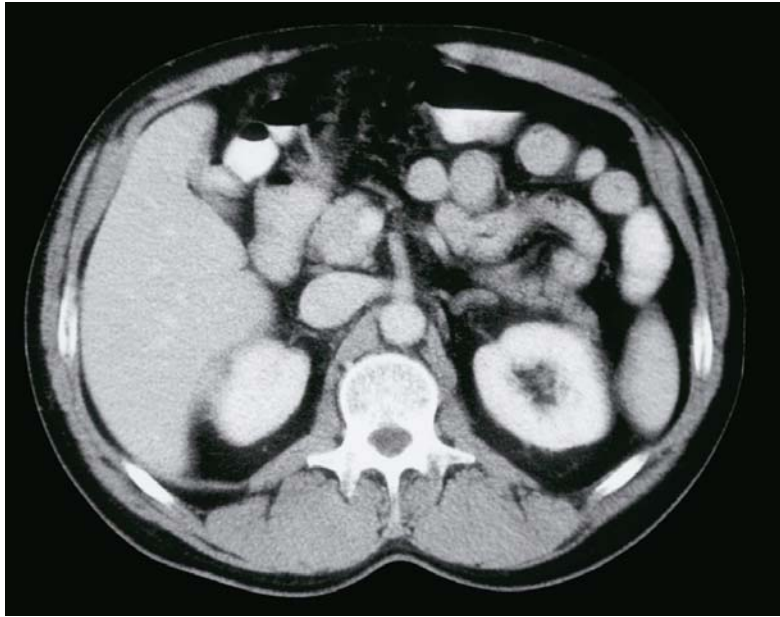
Abdomen, axialis CT felvétel / 4.



1. Linea alba
2. Rectus hüvelyk/M. rectus abdominis
3. Costa
4. Lobus dext. hepatis
5. Lobus sin. hepatis
6. Colon
7. Duodenum, pars superior
8. V. lienalis
9. Jejunum
10. Cauda pancreatis

11. V. cava inf.
12. Crus dext. diaphragmatis
13. A. mesenterica sup.
14. Aorta
15. Ren sinister
16. Lien
17. Ren dexter
18. Vertebra lumbalis I.
19. M. quadratus lumborum
20. M. erector spinae

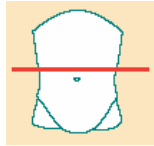
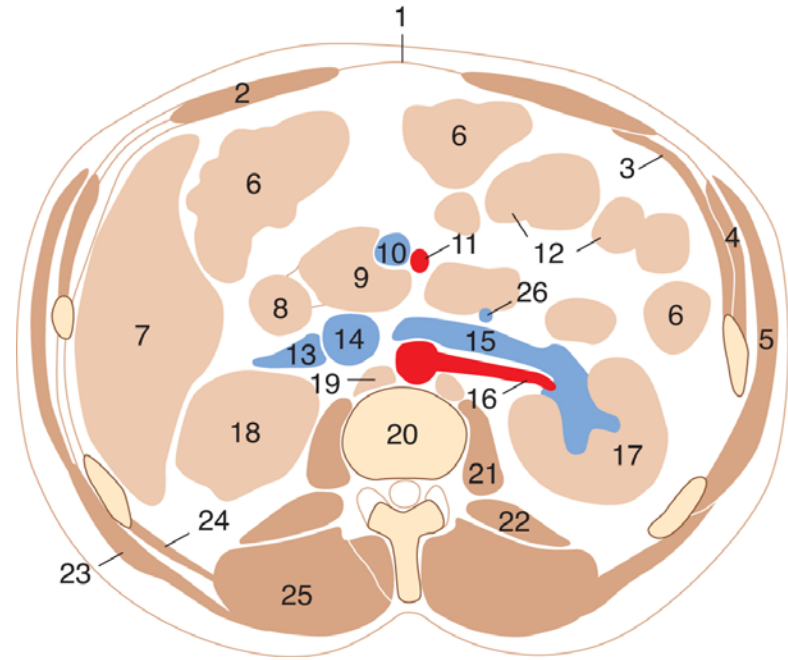
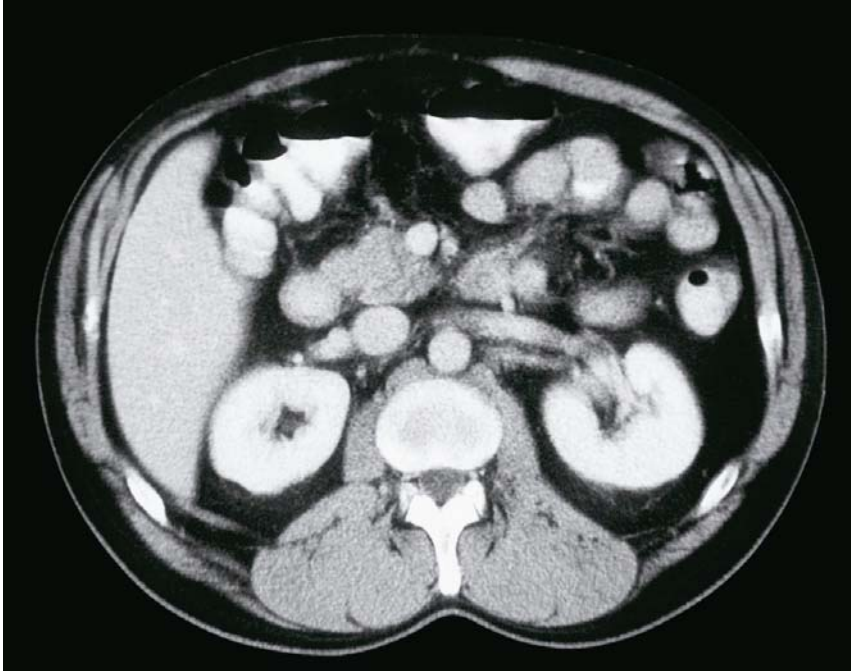
Abdomen, axialis CT felvétel / 5.



1. Linea alba
2. Rectus hüvely/M. rectus abdominis
3. Hepar
4. Vesica fellea
5. Colon transversum
6. Széles hasizmok
7. Duodenum, pars descendens
8. Jejunum
9. Cauda pancreatis
10. Caput pancreatis
11. V. mesenterica sup.

12. Art. mesenterica sup.
13. Aorta
14. V. cava inf.
15. V. renalis sin.
16. Ren dexter
17. Ren sinister
18. Lien
19. Vertebra lumbalis I.
20. M. psoas major
21. M. quadratus lumborum
22. M. erector spinae

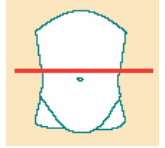
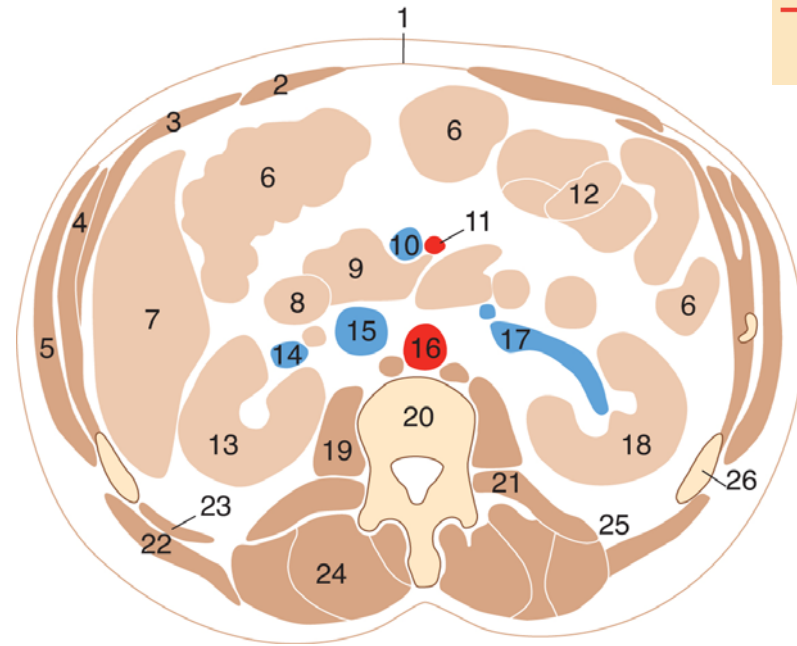
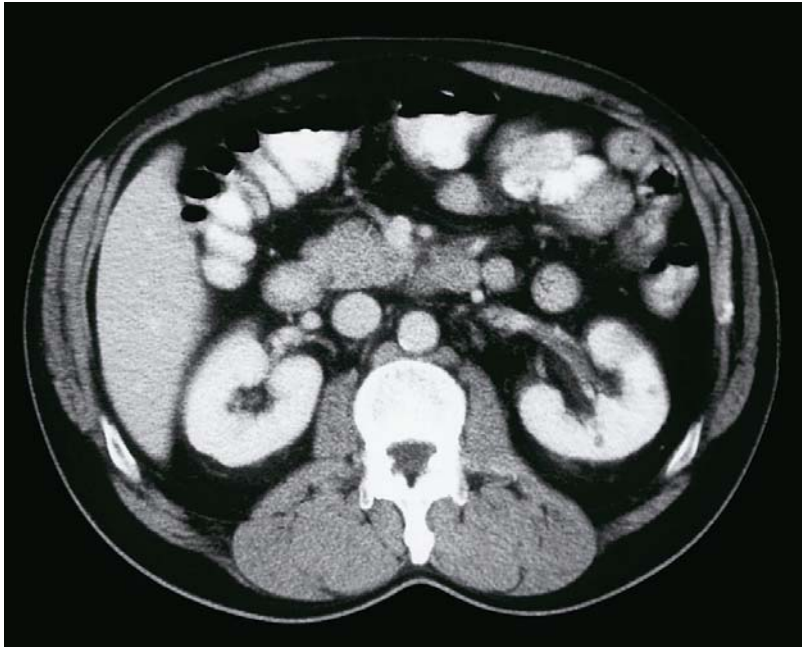
Abdomen, axialis CT felvétel / 6.



1. Linea alba
2. M. rectus abdominis
3. M. transversus abdominis
4. M. obliquus internus abd.
5. M. obliquus externus abd.
6. Colon
7. Hepar
8. Duodenum, pars descendens
9. Caput pancreatis
10. V. mesenterica sup.
11. A. mesenterica sup.
12. Jejunum
13. V. renalis dext.

14. V. cava inf.
15. V. renalis sin.
16. A. renalis sin.
17. Ren sinister
18. Ren dexter
19. Crus diaphragmatis
20. Discus intervertebralis lumbalis I/II.
21. M. psoas major
22. M. quadratus lumborum
23. M. latissimus dorsi
24. M. serratus post. inf.
25. M. erector spinae
26. V. mesenterica inf.

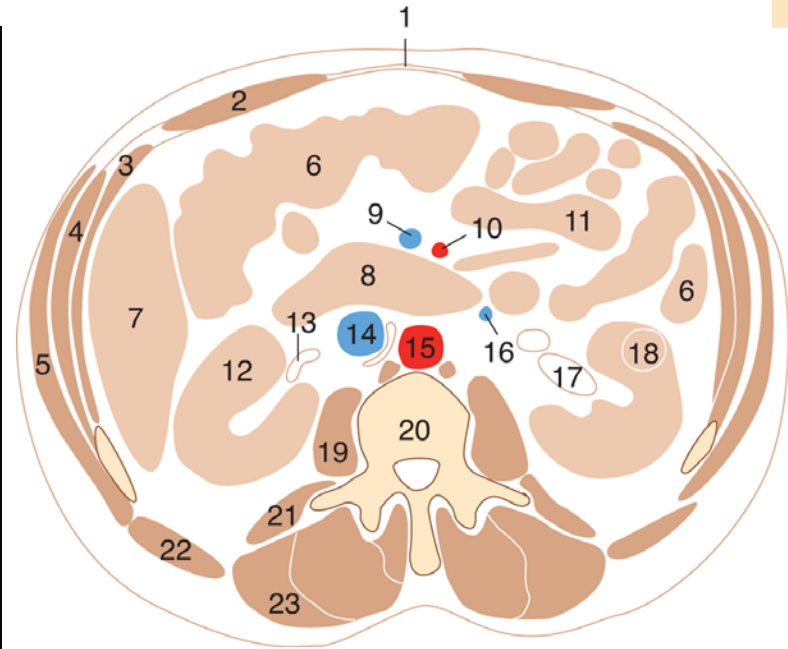
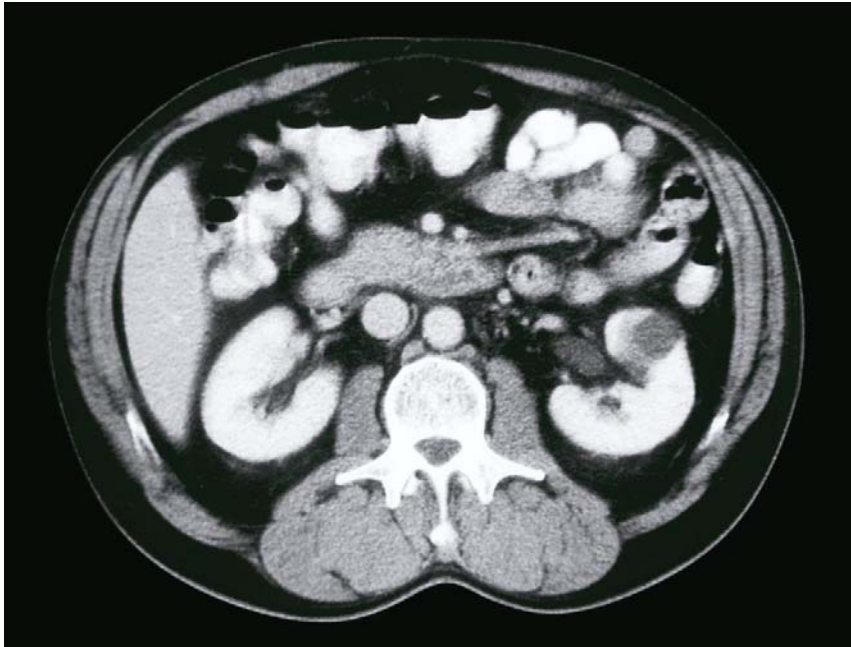
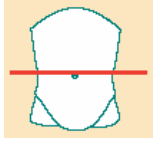
Abdomen, axialis CT felvétel / 7.



1. Linea alba
2. M. rectus abdominis
3. M. transversus abdominis
4. M. obliquus internus abd.
5. M. obliquus externus abd.
6. Colon
7. Hepar
8. Duodenum, pars descendens
9. Caput pancreatis
10. V. mesenterica sup.
11. A. mesenterica sup.
12. Jejunum
13. Ren dexter

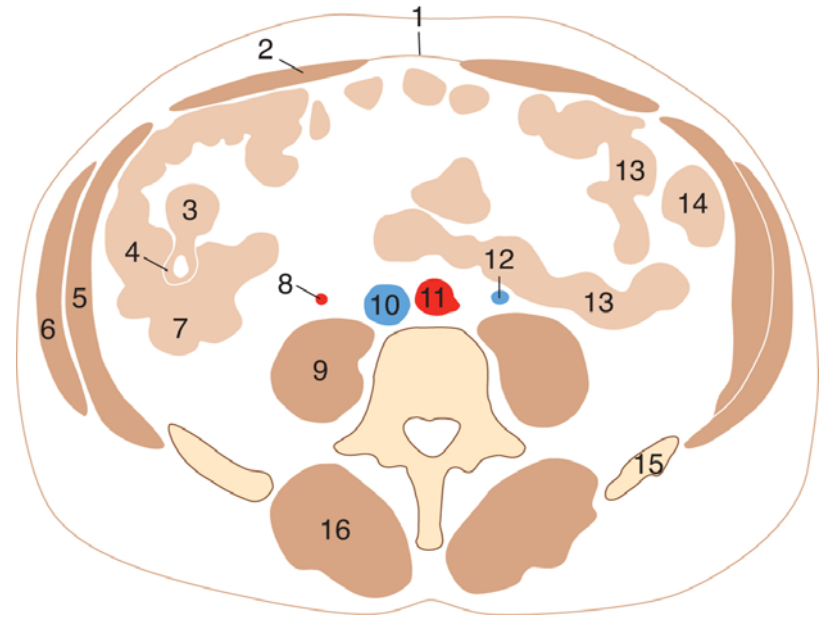
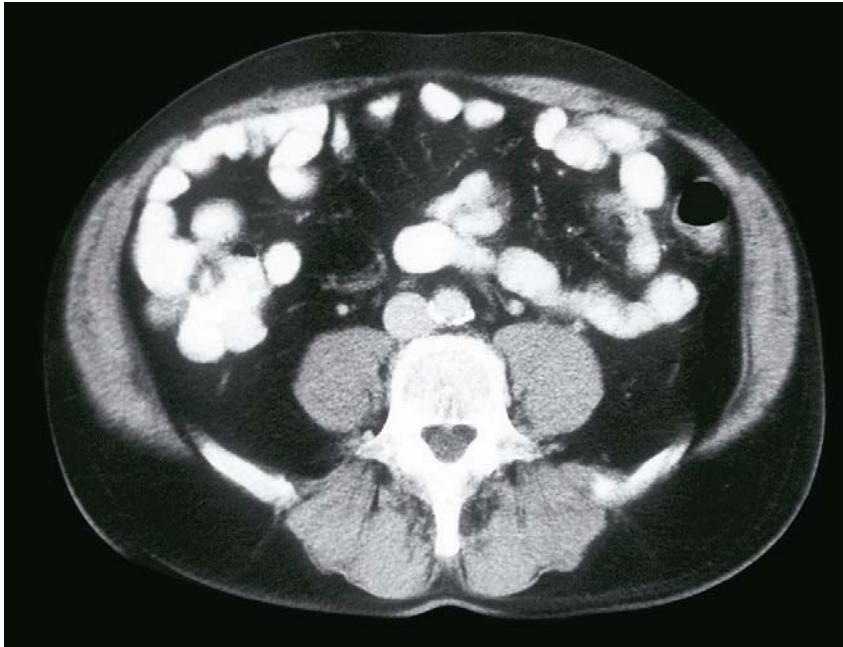
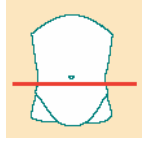
14. V. renalis dext.
15. V. cava inf.
16. Aorta
17. V. renalis sin.
18. Ren sinister
19. M. psoas major
20. Vertebra lumbalis II.
21. M. quadratus lumborum
22. M. latissimus dorsi
23. M. serratus post. inf.
24. M. erector spinae
25. Spatium pararenalis post.
26. Costa

Abdomen, axialis CT felvétel / 8.



- | | | | |
|-----|-----------------------------|-----|-----------------------|
| 1. | Linea alba | 13. | Ureter |
| 2. | M. rectus abdominis | 14. | V. cava inf. |
| 3. | M. transversus abdominis | 15. | Aorta |
| 4. | M. obliquus internus abd. | 16. | V. mesenterica inf. |
| 5. | M. obliquus externus abd. | 17. | Pelvis renalis |
| 6. | Colon | 18. | <i>Cysta renalis</i> |
| 7. | Hepar | 19. | M. psoas major |
| 8. | Duodenum, pars horizontalis | 20. | Vertebra lumb. II. |
| 9. | V. mesenterica sup. | 21. | M. quadratus lumborum |
| 10. | A. mesenterica sup. | 22. | M. latissimus dorsi |
| 11. | Jejunum | 23. | M. erector spinae |
| 12. | Ren dexter | | |

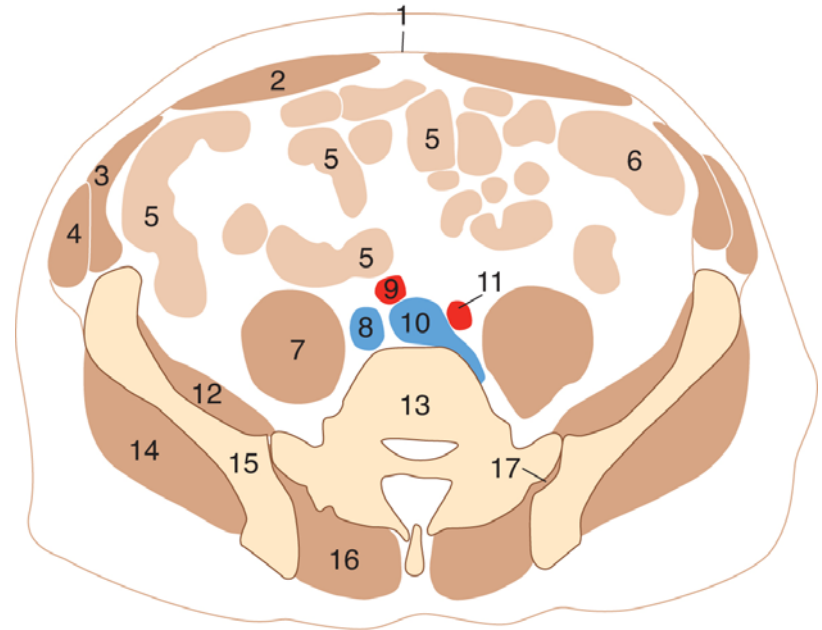
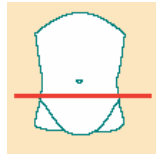
Abdomen, axialis CT felvétel / 9.



1. Linea alba
2. M. rectus abdominis
3. Ileum
4. Valva ileocaecalis
5. M. transversus abd. et m. obliquus int. abd.
6. M. obliquus ext. abd.
7. Caecum
8. Gonadalis erek

9. M. psoas maior
10. V. cava inf.
11. Aorta
12. V. mesenterica inf.
13. Jejunum
14. Colon
15. Crista iliaca
16. M. erector spinae

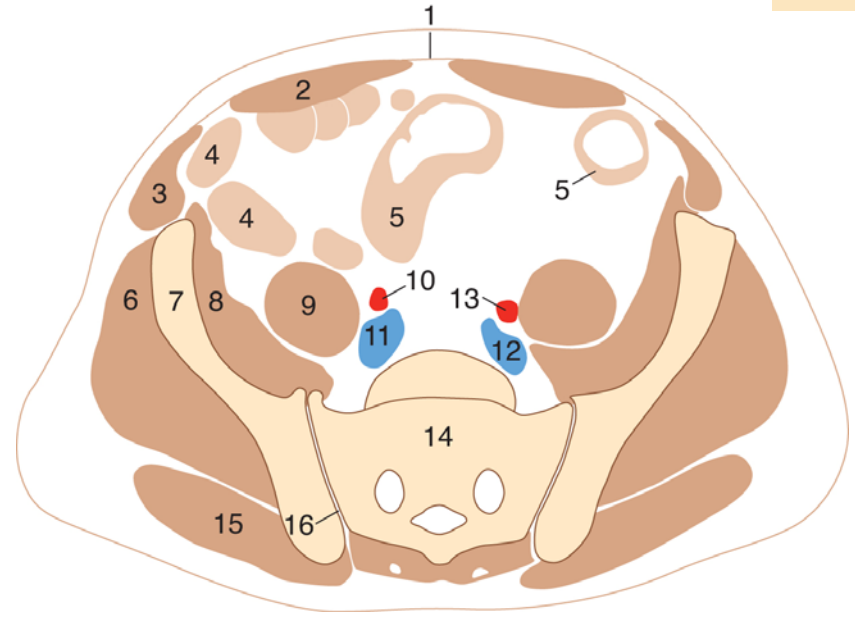
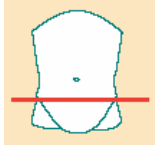
Abdomen, axialis CT felvétel / 10.



1. Linea alba
2. M. rectus abdominis
3. M. transversus et obliquus int. abd.
4. M. obliquus ext. abd.
5. Ileum
6. Colon descendens
7. M. psoas major
8. V. iliaca commun. dext.

9. A. iliaca commun. dext.
10. V. iliaca commun. sin.
11. A. iliaca commun. sin.
12. M. iliacus
13. Lumbosacralis junctio
14. M. gluteus medius
15. Os ilii
16. M. erector spinae
17. Articulatio sacroiliaca

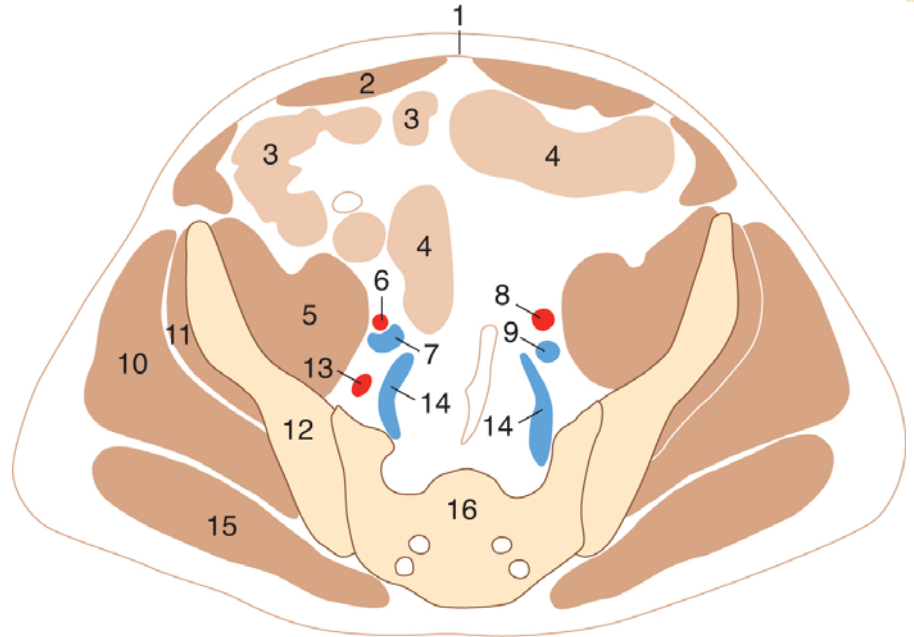
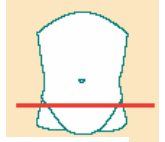
Abdomen, axialis CT felvétel / 11.



1. Linea alba
2. M. rectus abdominis
3. Széles hasizmok
4. Ileum
5. Colon sigmoideum
6. M. gluteus medius
7. Ilium
8. M. iliacus

9. M. psoas major
10. Art. iliaca communis dext.
11. V. iliaca communis dext.
12. V. iliaca communis sin.
13. A. iliaca communis sin.
14. Sacrum
15. M. gluteus maximus
16. Articulatio sacroiliaca

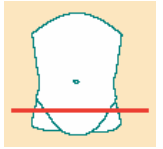
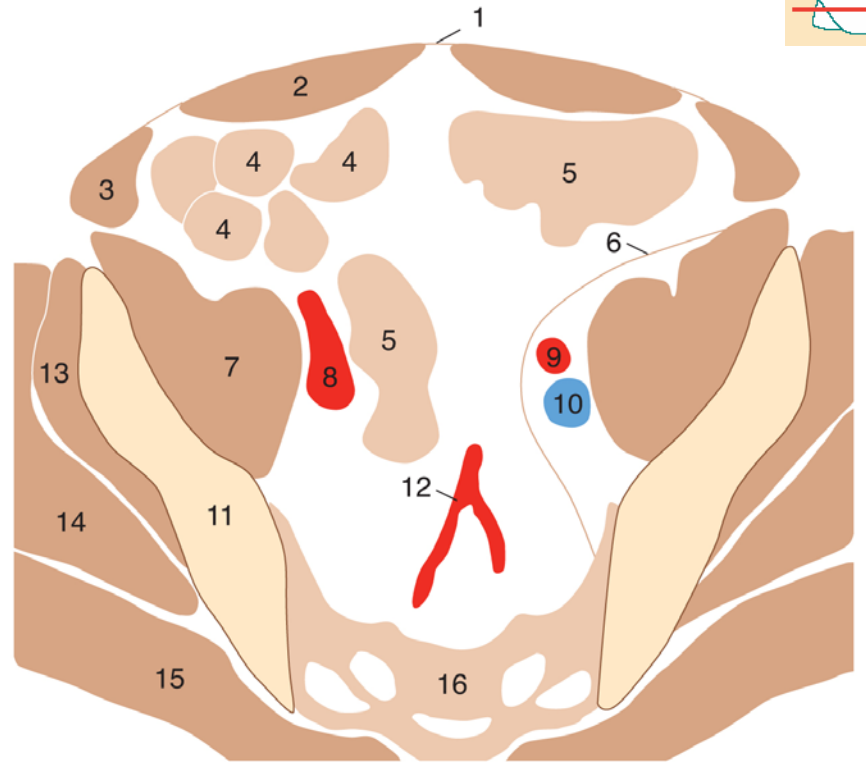
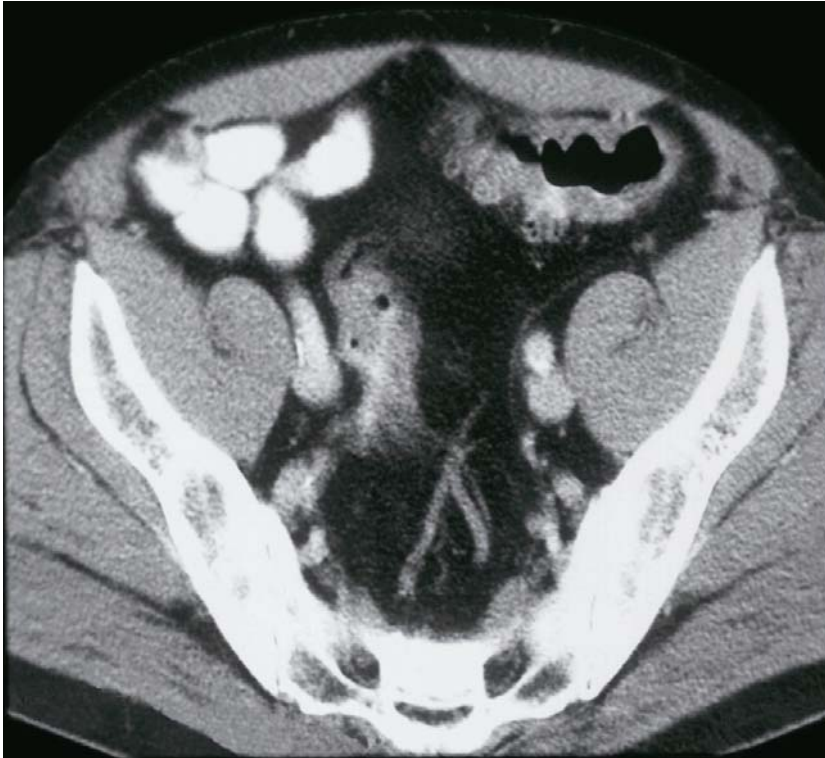
Abdomen, axial CT felvétel / 12.



1. Linea alba
2. M. rectus abdominis
3. Ileum
4. Colon sigmoideum
5. M. iliopsoas
6. A. iliaca ext. dext.
7. V. iliaca ext. dext.
8. A. iliaca ext. sin.

9. V. iliaca ext. sin.
10. M. gluteus medius
11. M. gluteus minimus
12. Ilium
13. A. iliaca int. dext.
14. VV. iliaca internae
15. M. gluteus maximus
16. Sacrum

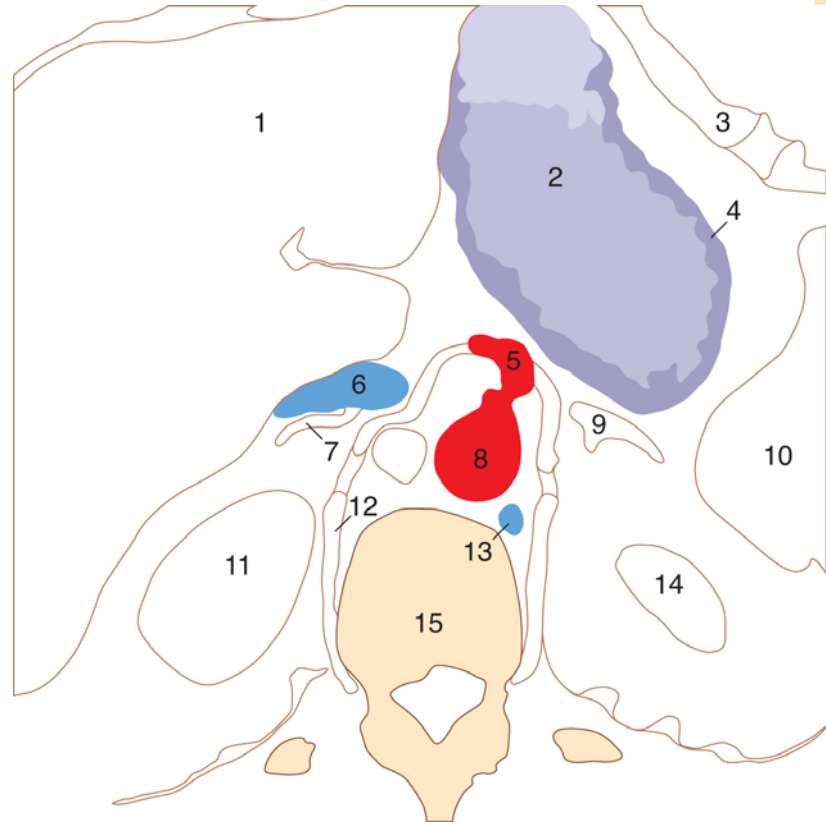
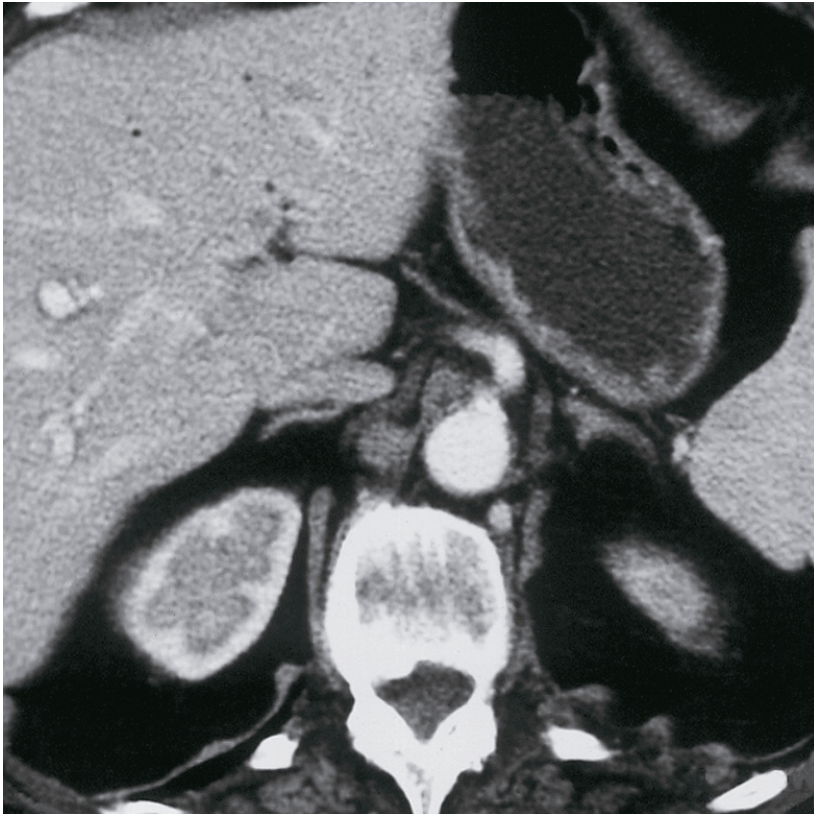
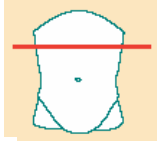
Abdomen, axialis CT felvétel / 13.



1. Linea alba
2. M. rectus abdominis
3. Széles hasizmok
4. Ileum
5. Colon sigmoideum
6. Peritoneum
7. M. iliopsoas
8. A. et v. iliaca ext. dext.

9. A. iliaca ext. sin.
10. V. iliaca ext. sin.
11. Ilium
12. A. sacralis media
13. M. gluteus minimus
14. M. gluteus medius
15. M. gluteus maximus
16. Sacrum

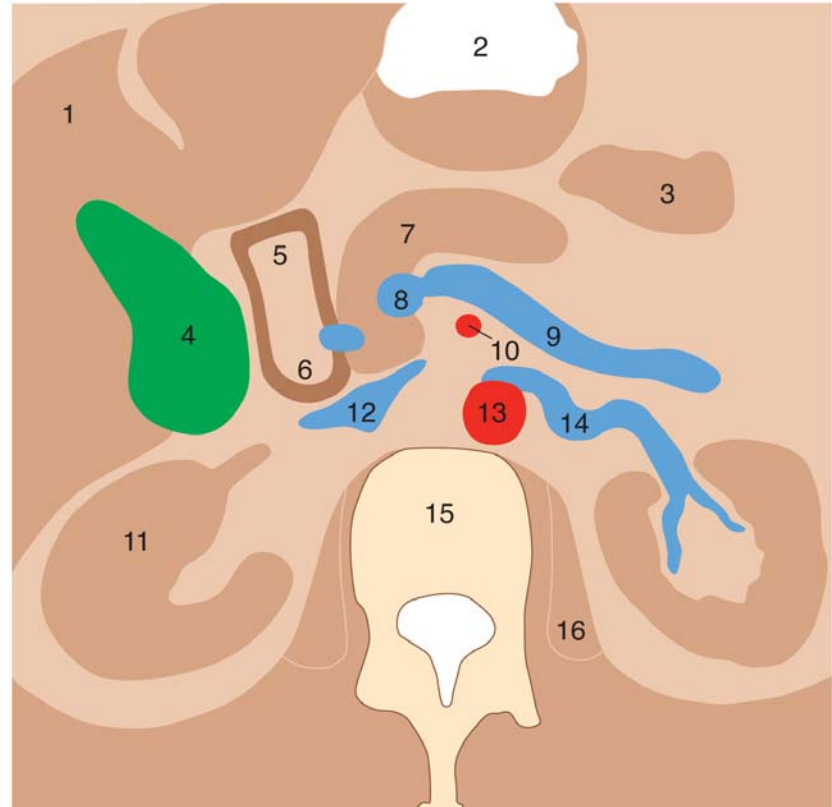
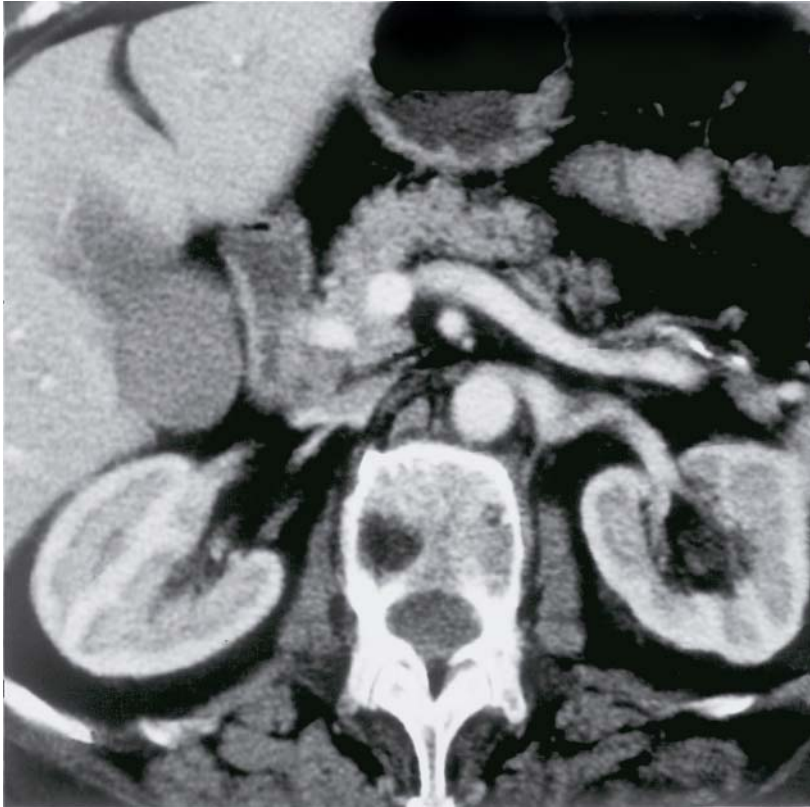
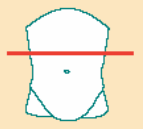
Gyomor, axiális CT felvétel



1. Hepar
2. Gaster (vízzel telt)
3. Diaphragma (bal kupola)
4. Gyomor fala
5. Truncus coeliacus
6. V. cava inf.
7. Gl. suprarenalis dext.
8. Aorta

9. Gl. suprarenalis sin.
10. Lien
11. Ren dexter
12. Diaphragma (crus dext.)
13. V. hemiazygos
14. Ren sinister
15. Vertebra

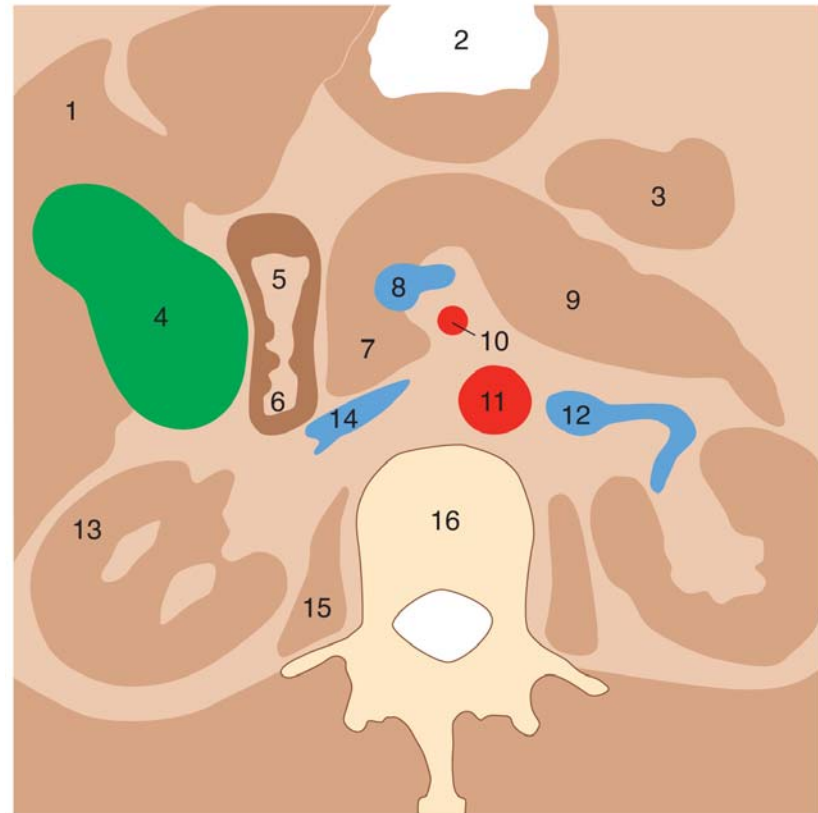
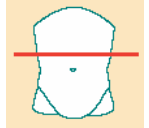
Duodenum, axial CT felvétel / 1.



1. Hepar
2. Gaster
3. Jejunum
4. Vesica fellea
5. Duodenum, pars superior
6. Duodenum, pars descendens
7. Pancreas
8. V. mesenterica sup.

9. V. lienalis
10. A. mesenterica sup.
11. Ren
12. V. cava inf.
13. Aorta
14. V. renalis
15. Discus intervertebralis LI/LII
16. M. psoas major

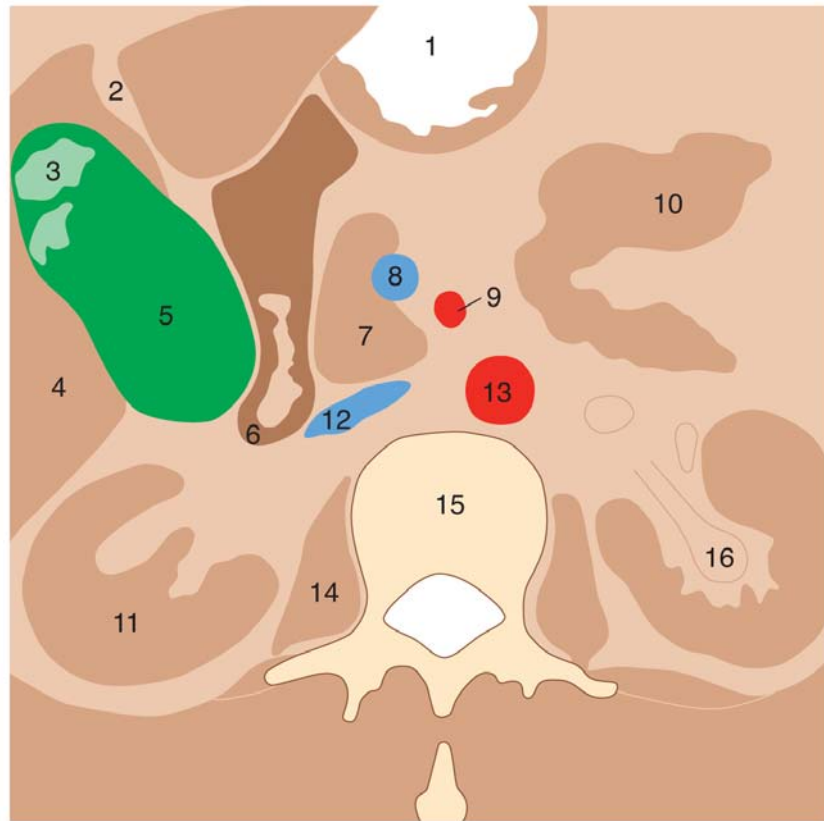
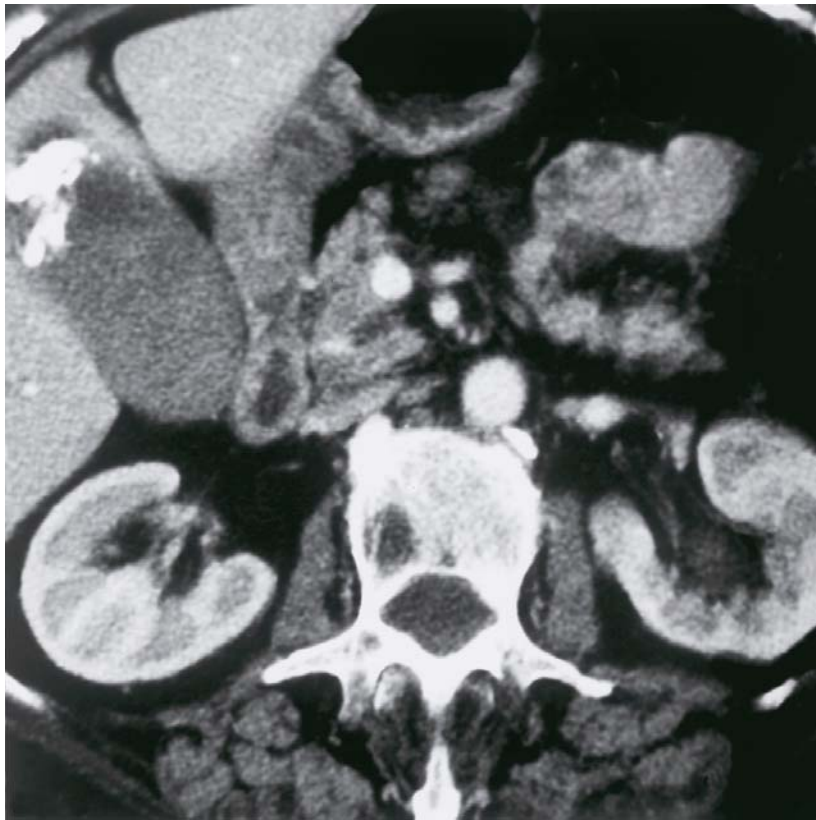
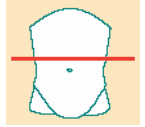
Duodenum, axial CT felvétel / 2.



1. Hepar
2. Gaster
3. Jejunum
4. Vesica fellea
5. Duodenum, pars sup.
6. Duodenum, pars descendens
7. Caput pancreatis
8. V. mesenterica sup. és v. lienalis egybeömlése

9. Cauda pancreatis
10. A. mesenterica sup.
11. Aorta
12. V. renalis sin.
13. Ren
14. V. cava inf.
15. M. psoas major
16. Discus intervertebralis LI/LII

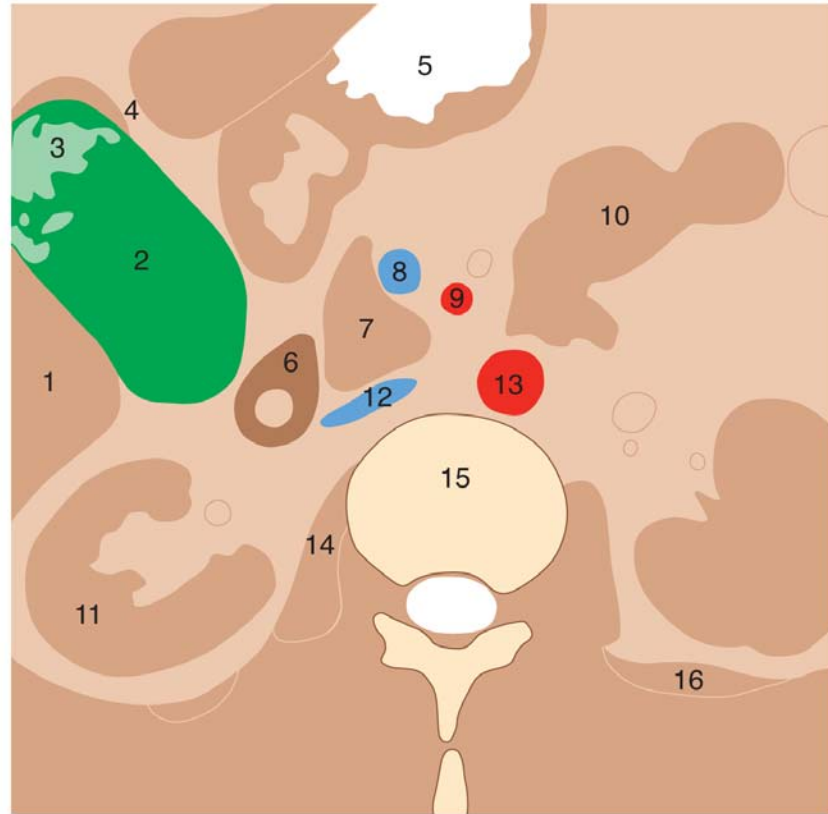
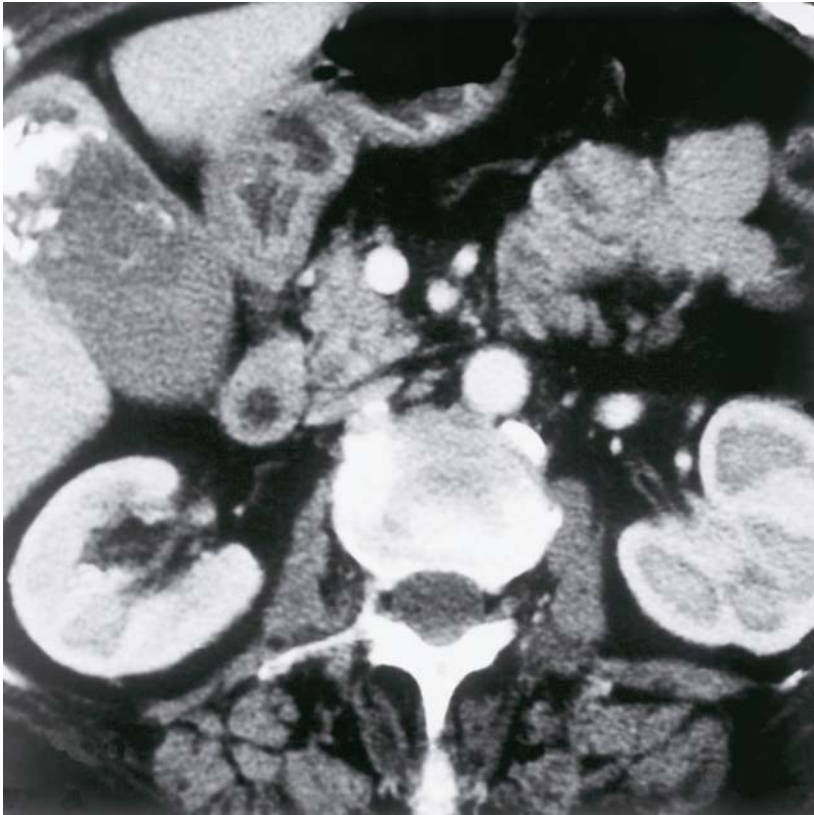
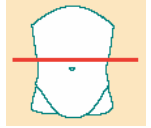
Duodenum, axial CT felvétel / 3.



1. Gaster
2. Fissura lig. teretis
3. Epekő
4. Hepar
5. Vesica fellea
6. Duodenum, pars descendens
7. Pancreas (caput)
8. V. mesenterica sup.

9. A. mesenterica sup.
10. Jejunum
11. Ren
12. V. cava inf.
13. Aorta
14. M. psoas major
15. Vertebra lumb. II.
16. Pelvis renalis

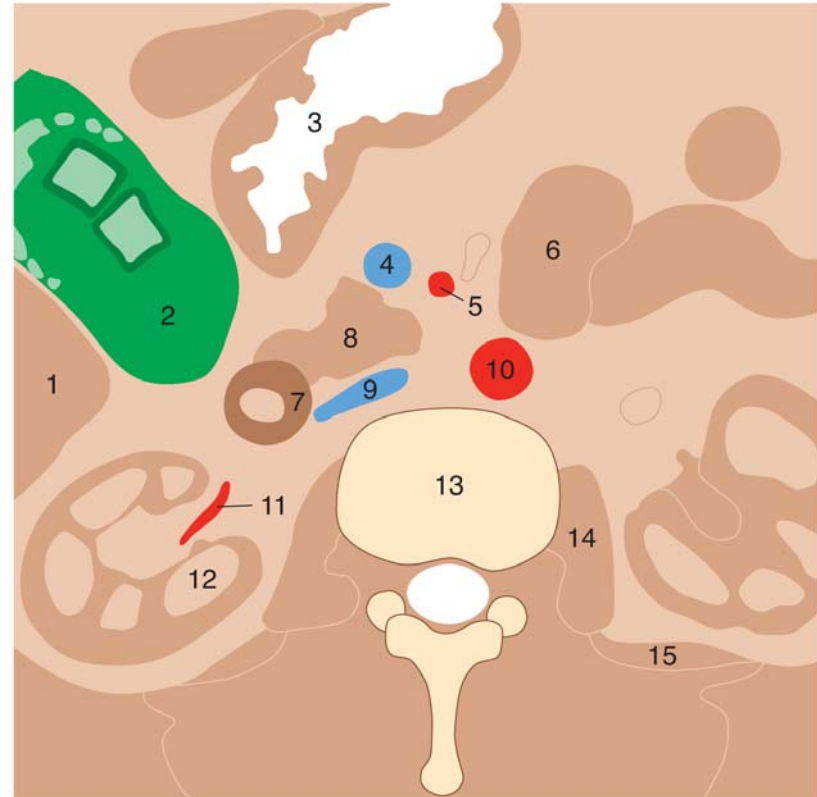
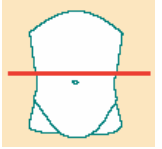
Duodenum, axial CT felvétel / 4.



1. Hepar
2. Vesica fellea
3. Epekő
4. Fissura lig. teretis
5. Gaster (pylorus/antrum)
6. Duodenum, pars descendens
7. Pancreas (caput)
8. V. mesenterica sup.

9. A. mesenterica sup.
10. Jejunum
11. Ren
12. V. cava inf.
13. Aorta
14. M. psoas major
15. Vertebra lumb. II.
16. M. quadratus lumborum

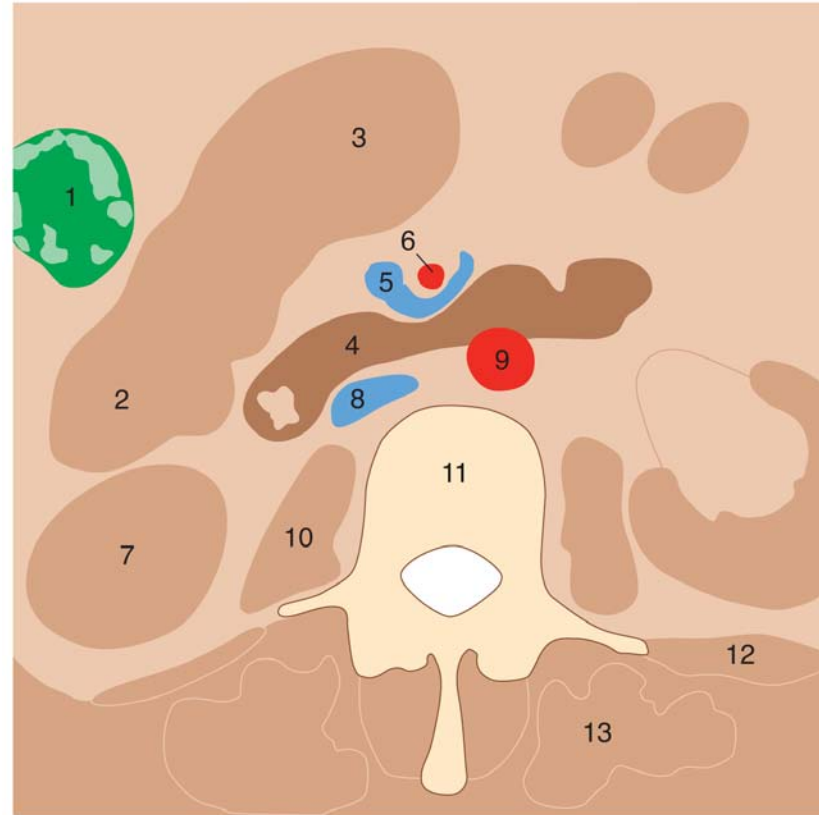
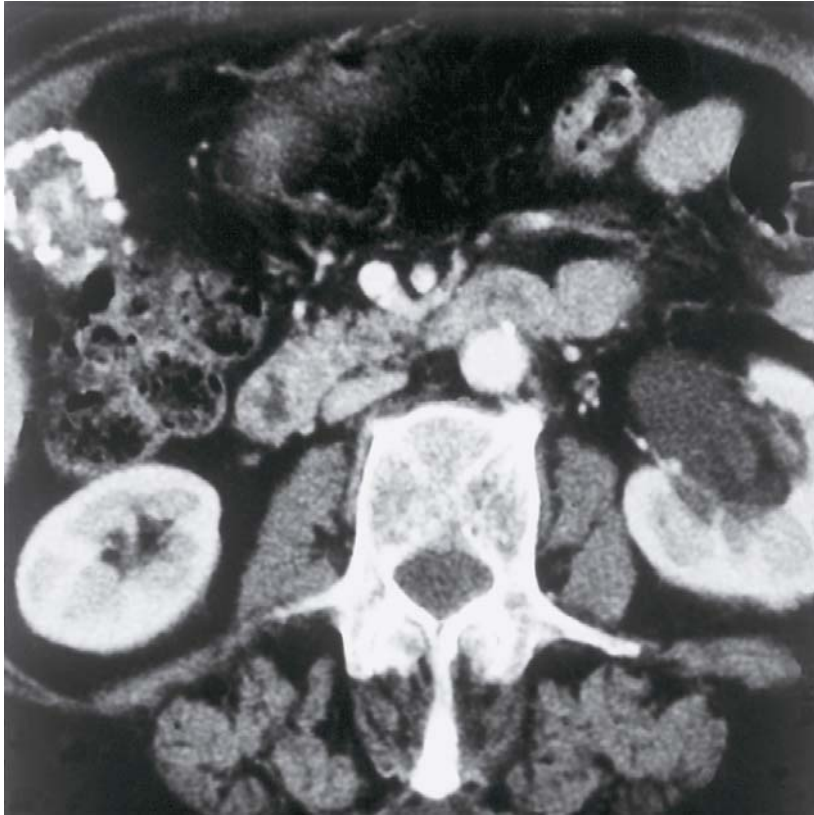
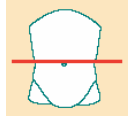
Duodenum, axial CT felvétel / 5.



1. Hepar
2. Vesica fellea, epekő
3. Pylorus
4. V. mesenterica sup.
5. A. mesenterica sup.
6. Jejunum
7. Duodenum, pars descendens
8. Pancreas (caput)

9. V. cava inf.
10. Aorta
11. A. renalis dext. ág
12. Ren
13. Discus intervertebralis lumb. II-III.
14. M. psoas major
15. M. quadratus lumborum

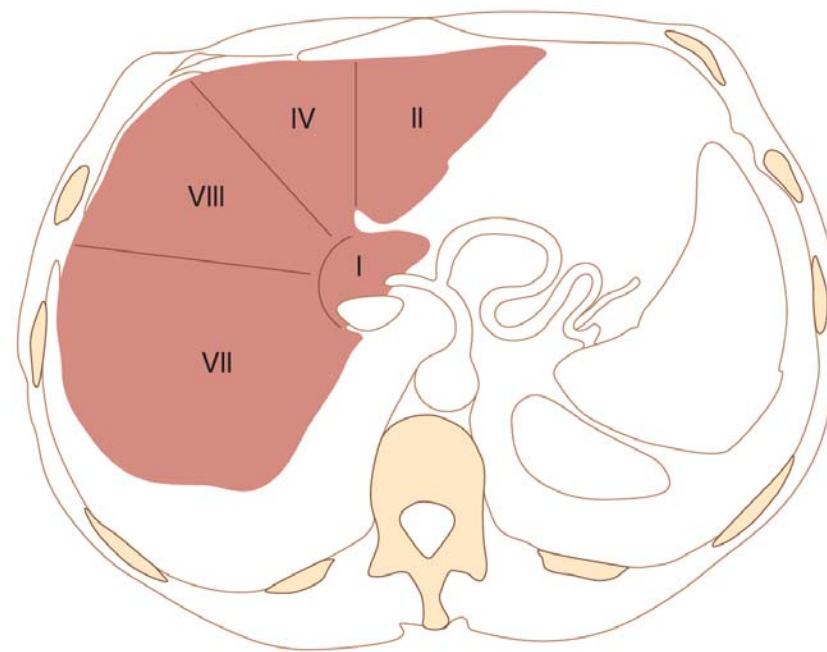
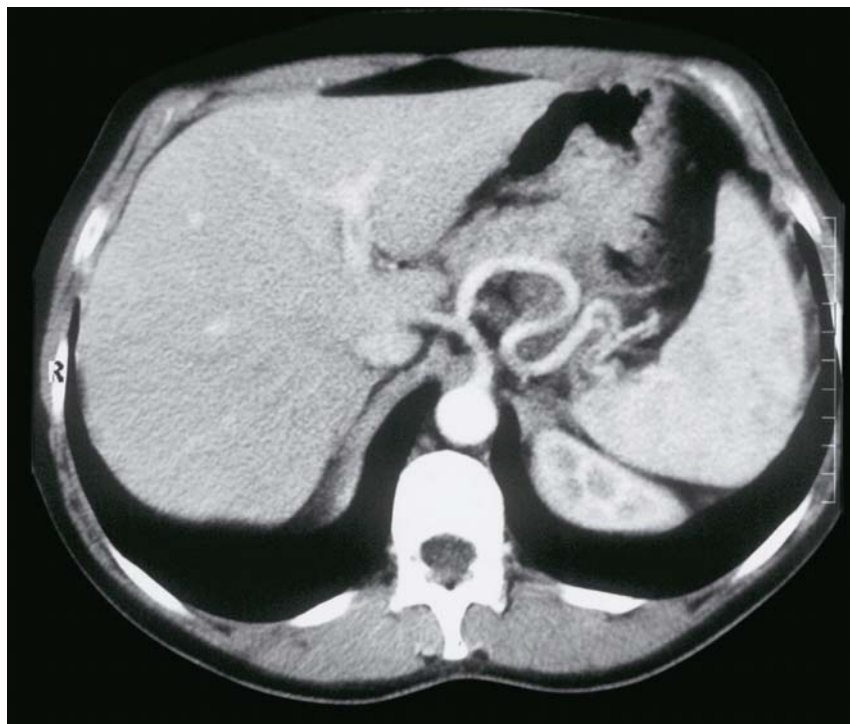
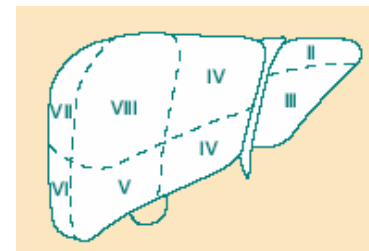
Duodenum, axial CT felvétel / 6.



1. Vesica fellea
2. Colon, flexura hepatica
3. Colon transversum
4. Duodenum, pars horizontalis
5. V. mesenterica sup.
6. A. mesenterica sup.
7. Ren

8. V. cava inf.
9. Aorta
10. M. psoas major
11. Vertebra lumb. III.
12. M. quadratus lumborum
13. M. erector spinae

Máj – szegmentumok / 1.



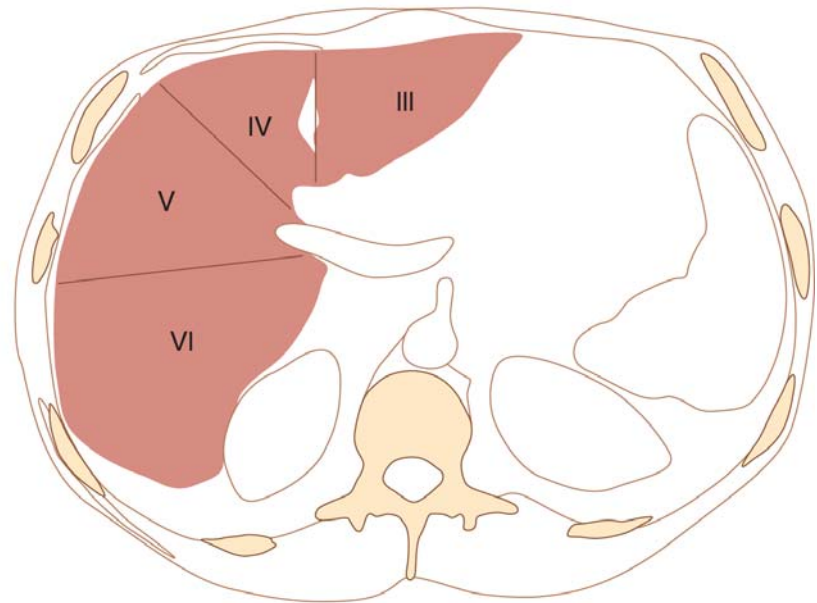
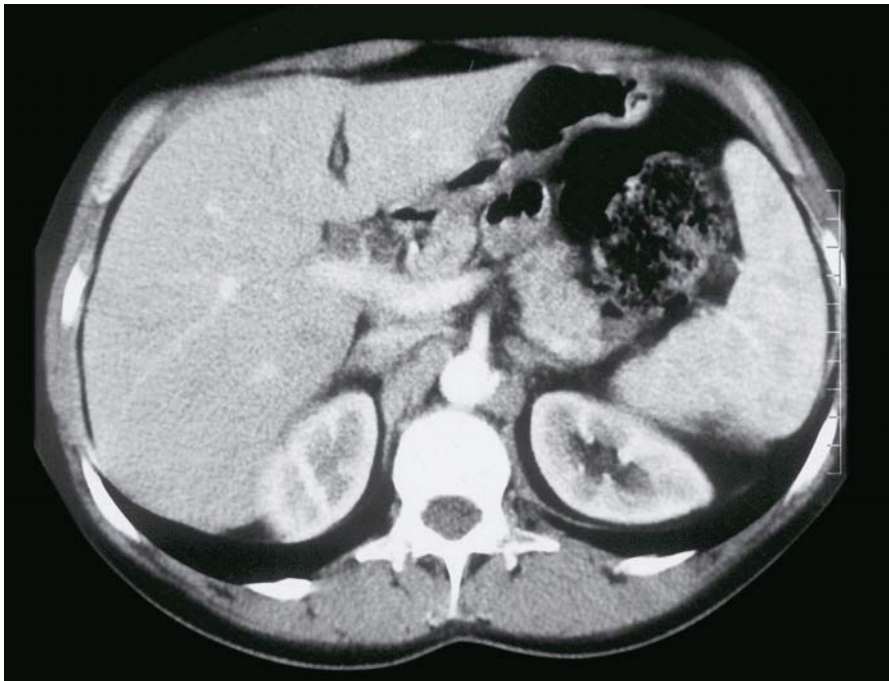
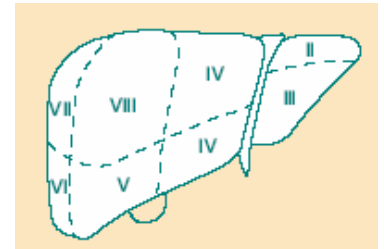
Lobus sinister:

- I. Lobus caudatus
- II. Segmentum laterale superius
- III. Segmentum laterale inferius
- IV. Segmentum mediale superius et inferius

Lobus dexter:

- V. Segmentum anterius inferius
- VI. Segmentum posterius inferius
- VII. Segmentum posterius superius
- VIII. Segmentum anterius superius

Máj – szegmentumok / 2.



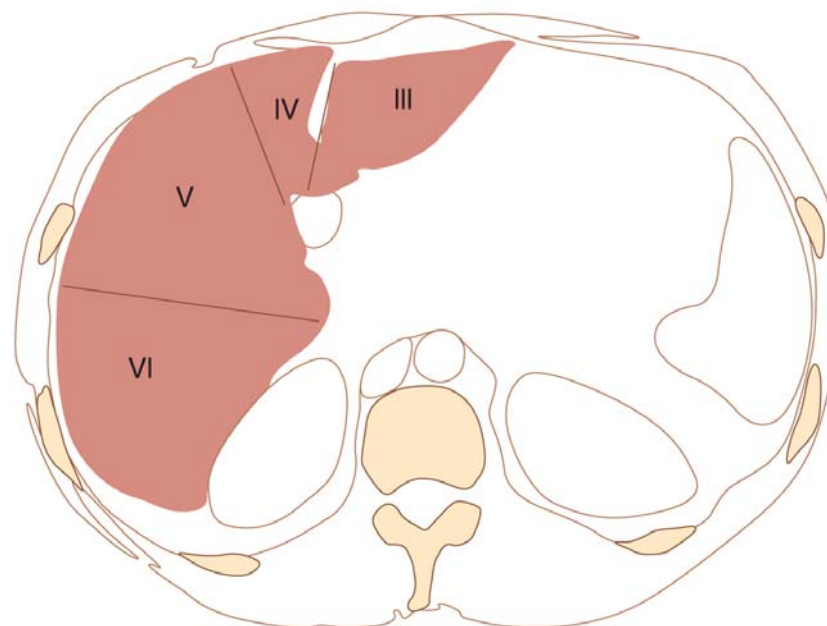
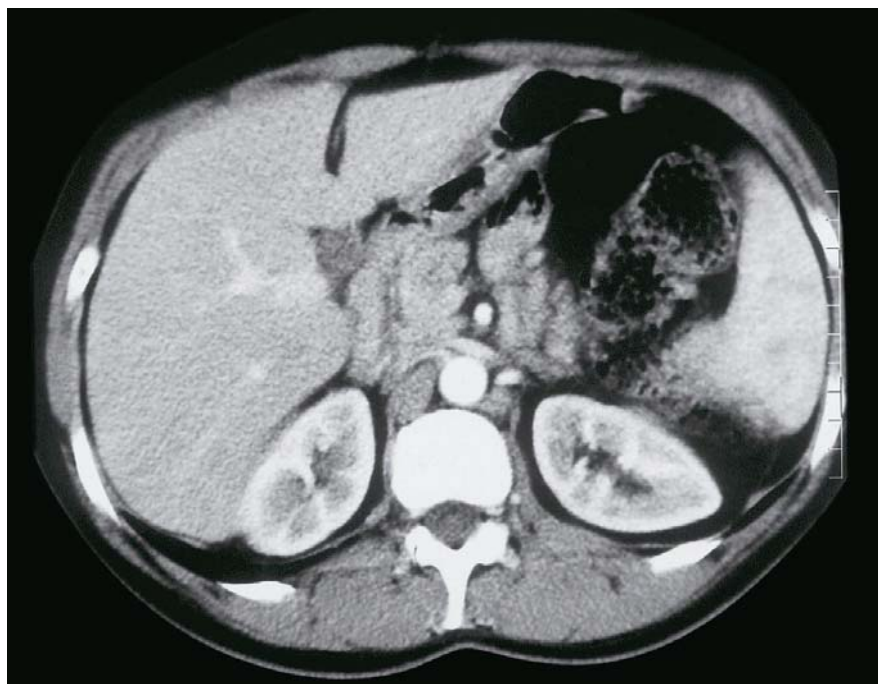
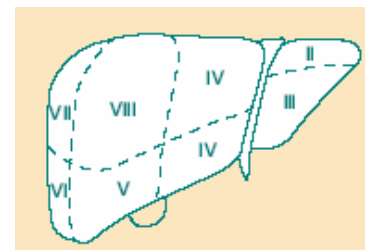
Lobus sinister:

- I. Lobus caudatus
- II. Segmentum laterale superius
- III. Segmentum laterale inferius
- IV. Segmentum mediale superius et inferius

Lobus dexter:

- V. Segmentum anterius inferius
- VI. Segmentum posterius inferius
- VII. Segmentum posterius superius
- VIII. Segmentum anterius superius

Máj – szegmentumok / 3.



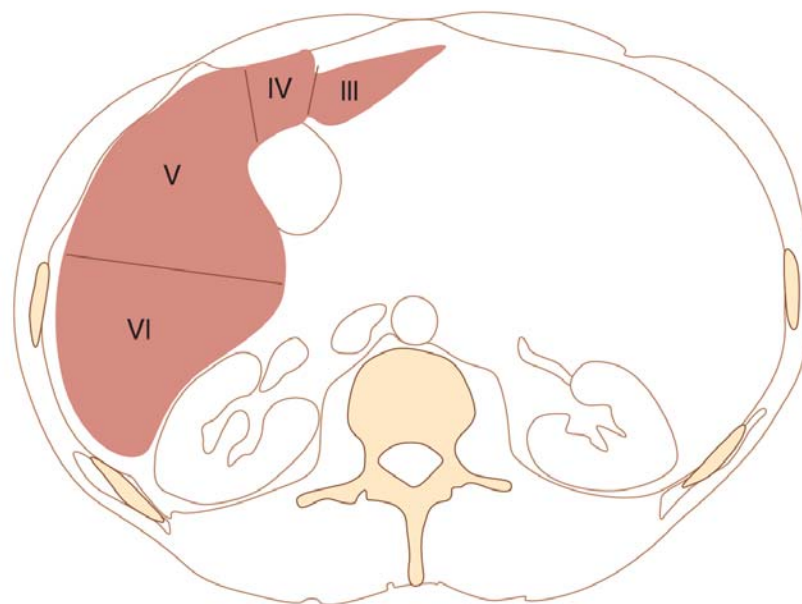
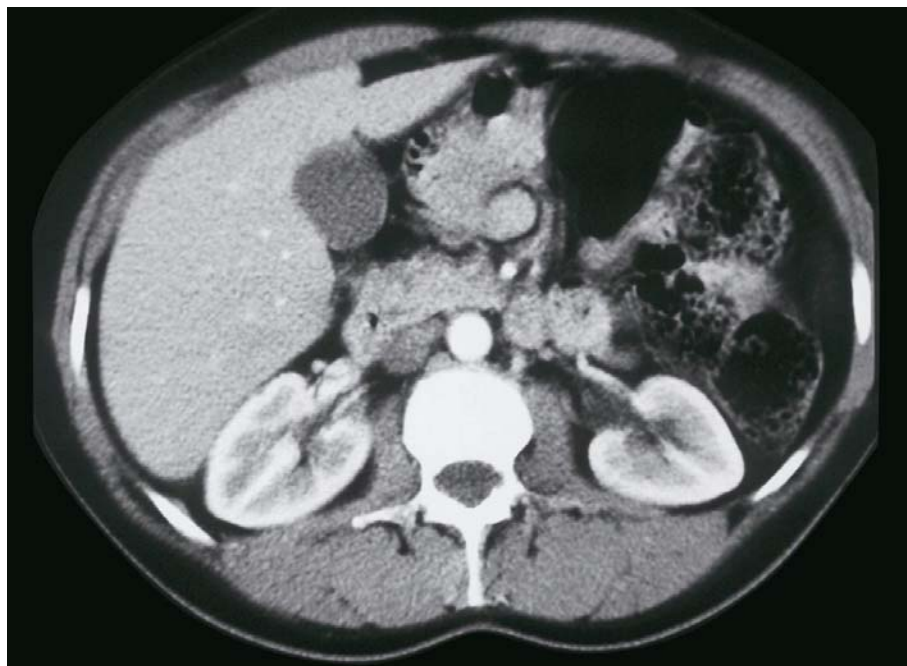
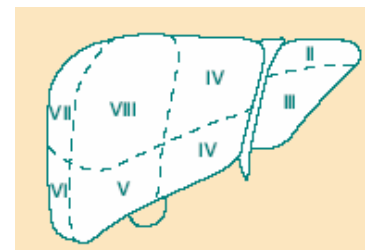
Lobus sinister:

- I. Lobus caudatus
- II. Segmentum laterale superius
- III. Segmentum laterale inferius
- IV. Segmentum mediale superius et inferius

Lobus dexter:

- V. Segmentum anterius inferius
- VI. Segmentum posterius inferius
- VII. Segmentum posterius superius
- VIII. Segmentum anterius superius

Máj – szegmentumok / 4.



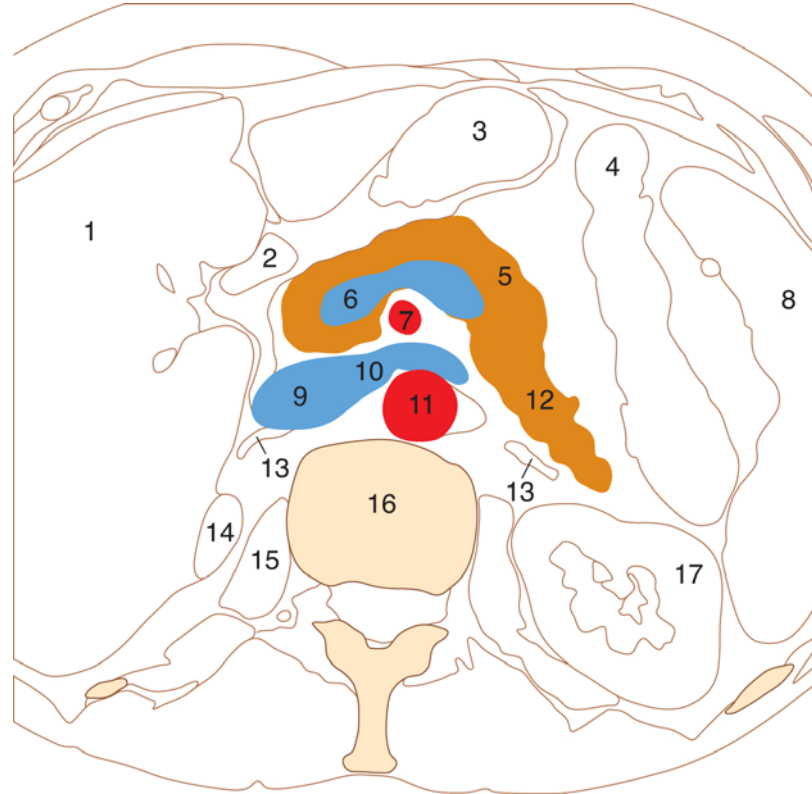
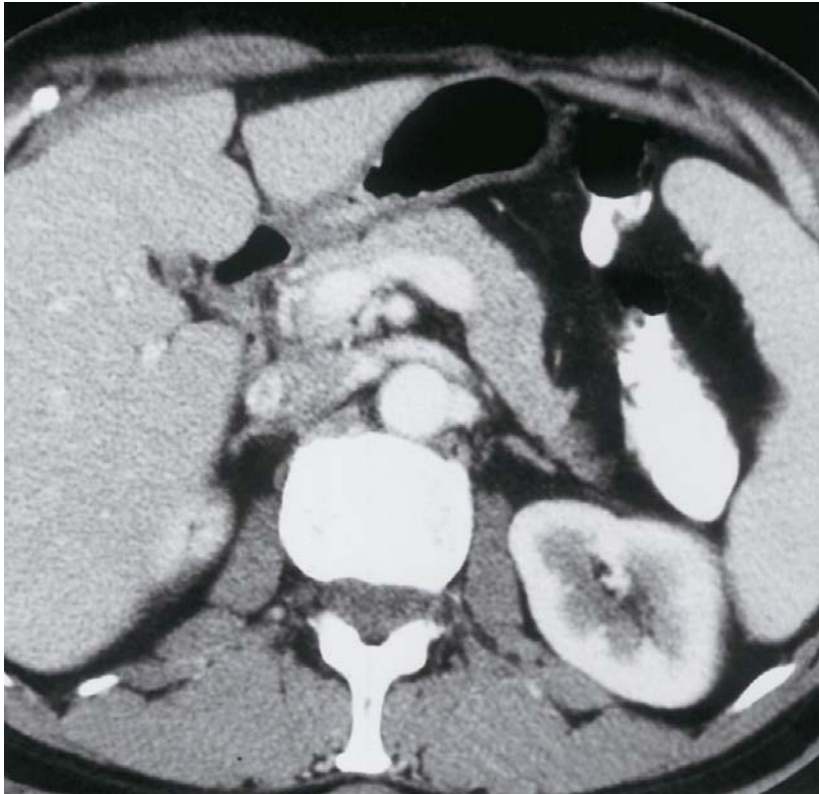
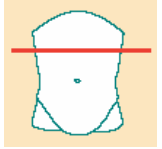
Lobus sinister:

- I. Lobus caudatus
- II. Segmentum laterale superius
- III. Segmentum laterale inferius
- IV. Segmentum mediale superius et inferius

Lobus dexter:

- V. Segmentum anterius inferius
- VI. Segmentum posterius inferius
- VII. Segmentum posterius superius
- VIII. Segmentum anterius superius

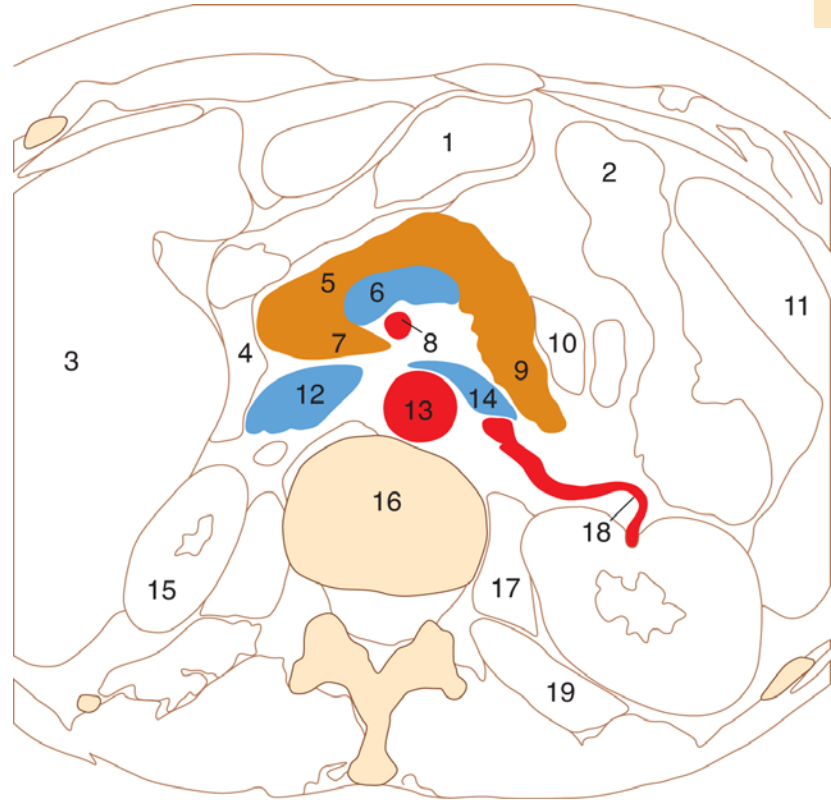
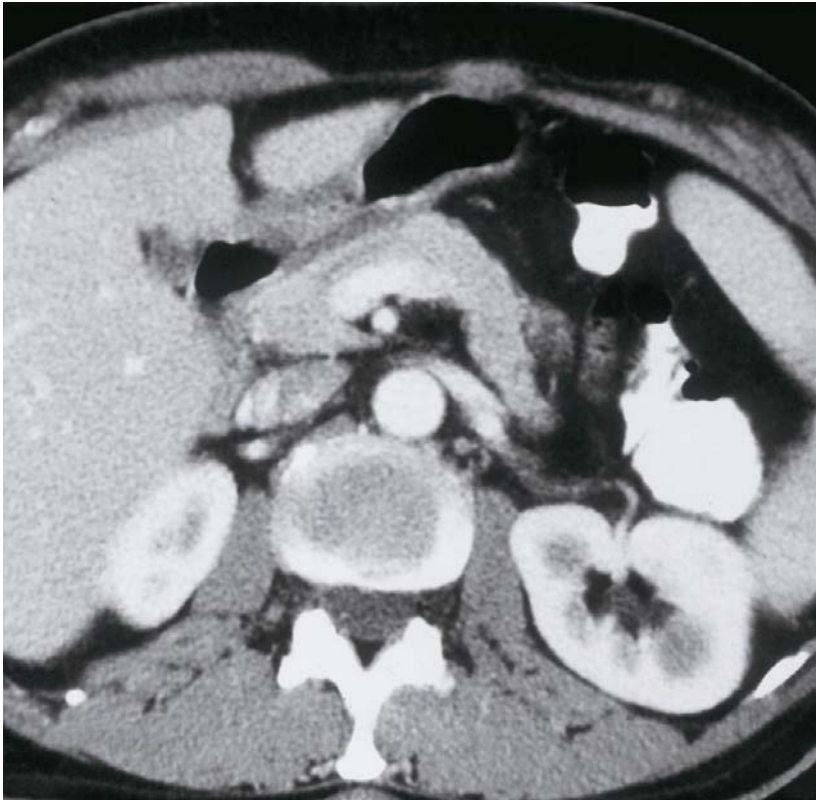
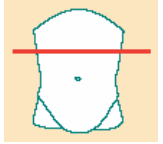
Pancreas, axial CT felvétel / 1.



1. Hepar
2. Pars pylorica ventriculi
3. Corpus ventriculi
4. Flexura coli sin. (lienalis)
5. Corpus pancreatis
6. V. lienalis
7. A. mesenterica sup.
8. Lien
9. V. cava inf.

10. V. renalis sin.
11. Aorta
12. Cauda pancreatis
13. Gl. suprarenalis
14. Ren dexter
15. M. psoas major
16. Vertebra
17. Ren sinister

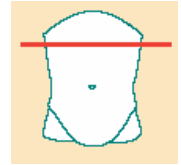
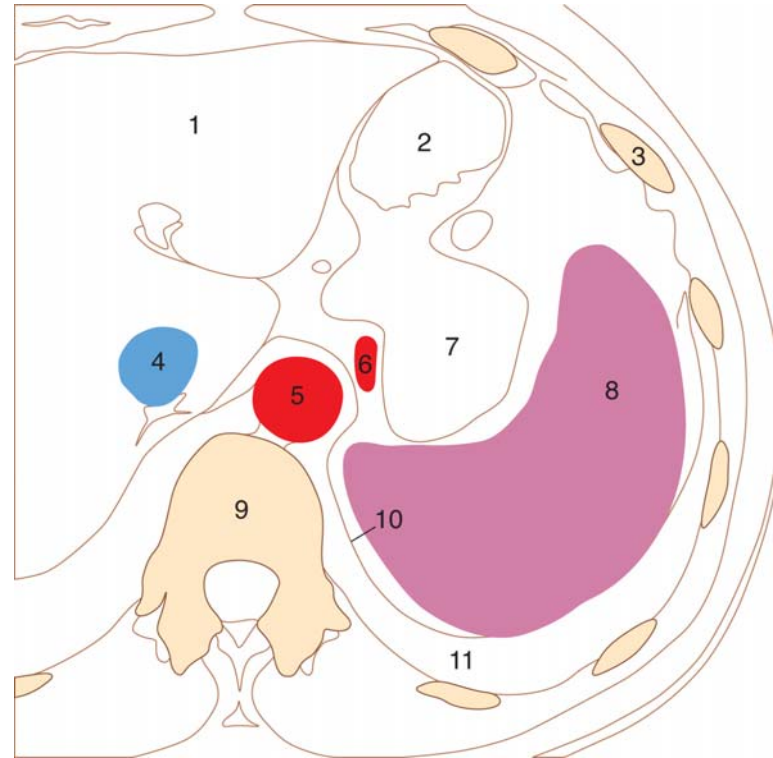
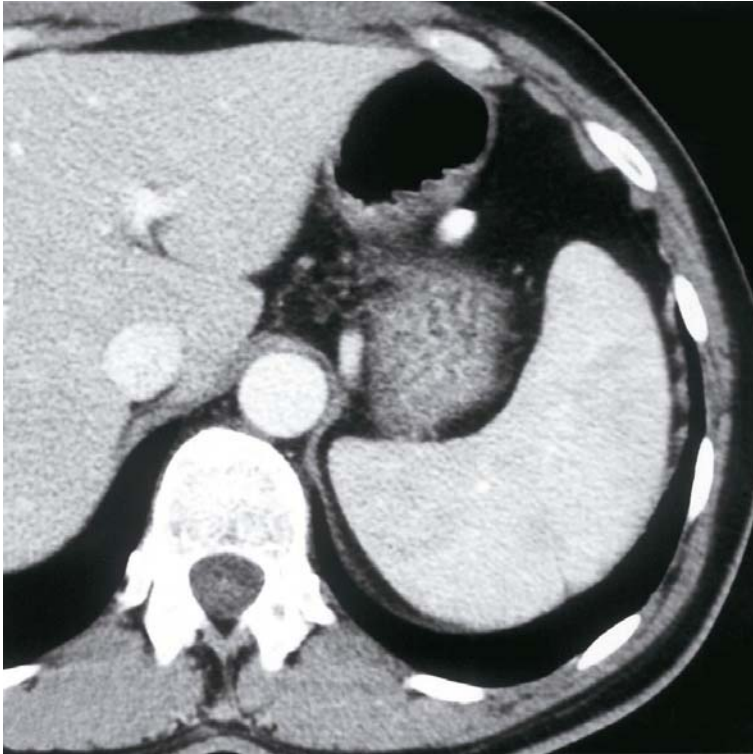
Pancreas, axialis CT felvétel / 2.



1. Gaster
2. Flexura coli sinistra (lienalis)
3. Hepar
4. Duodenum
5. Caput pancreatis
6. V. mesenterica sup. és v. lienalis egybeömlése
7. Pancreas, proc. uncinatus
8. A. mesenterica sup.
9. Cauda pancreatis

10. Vékonybél
11. Lien
12. V. cava inf.
13. Aorta
14. V. renalis sin.
15. Ren dexter
16. Vertebra
17. Ren sinister
18. V. renalis sin.
19. M. quadratus lumborum

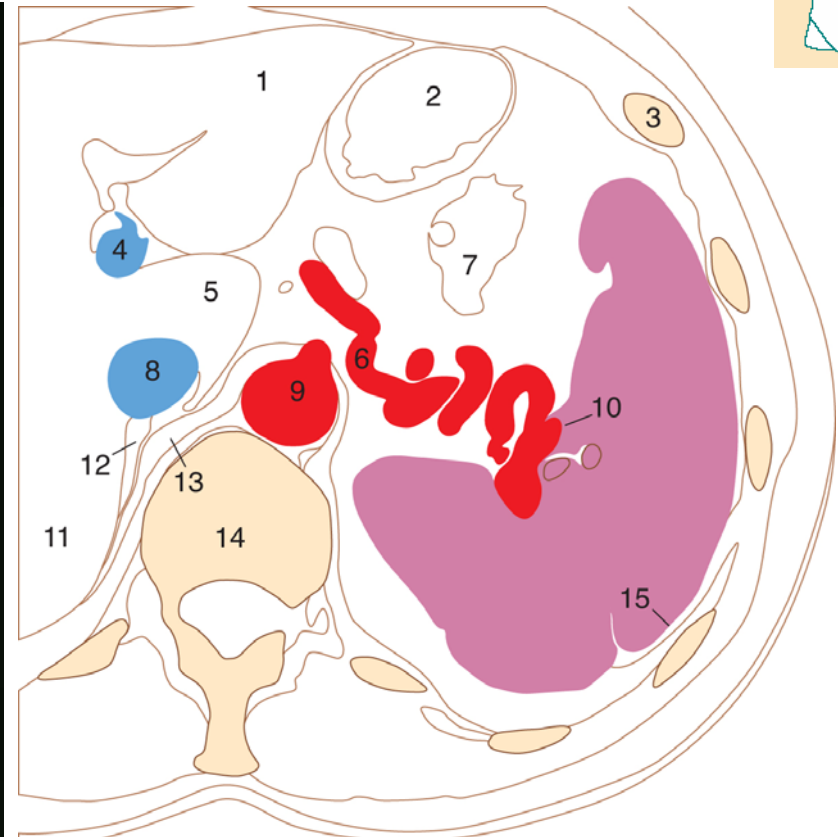
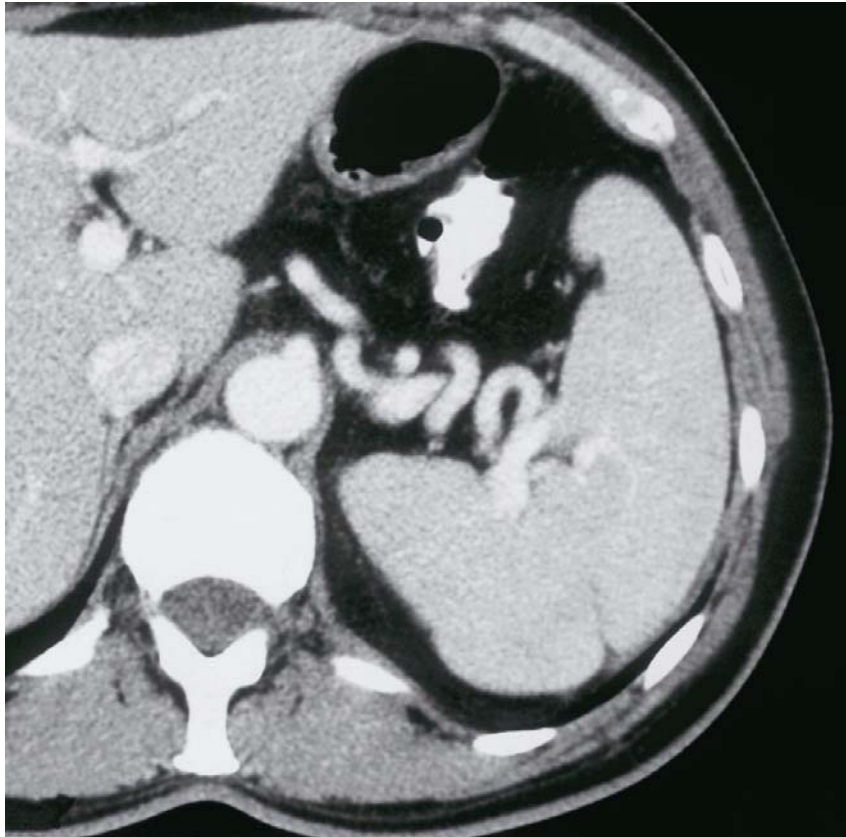
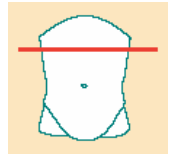
Lép, axialis CT felvétel / 1.



1. Hepar
2. Gaster (levegővel telt)
3. Costa
4. V. cava inf.
5. Aorta
6. A. lienalis

7. Fundus ventriculi
8. Lien
9. Vertebra
10. Diaphragma
11. Recessus costodiaphragmaticus

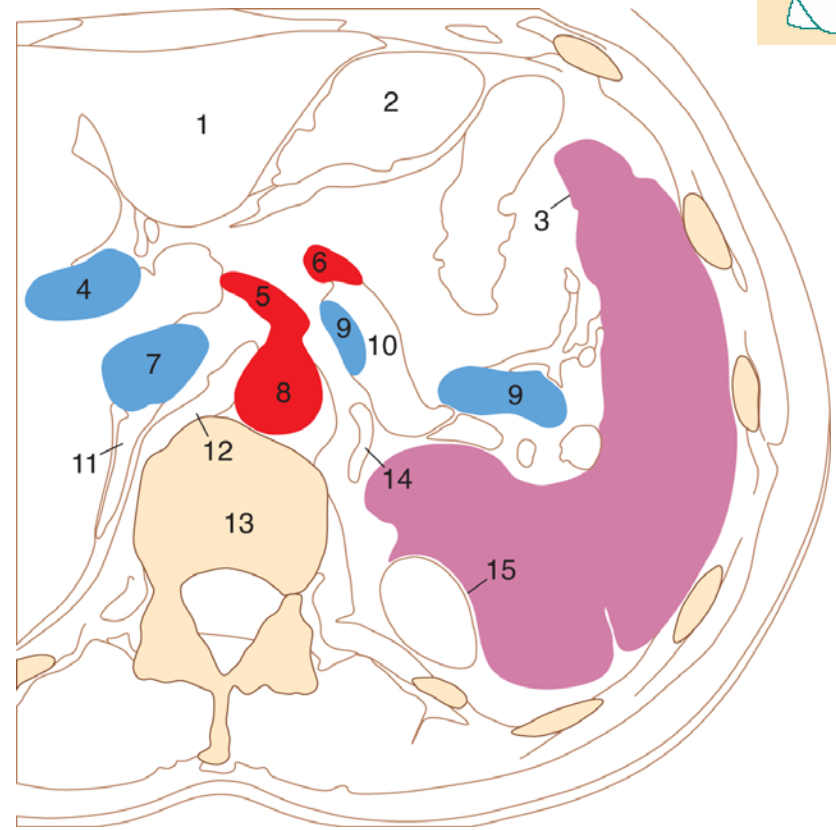
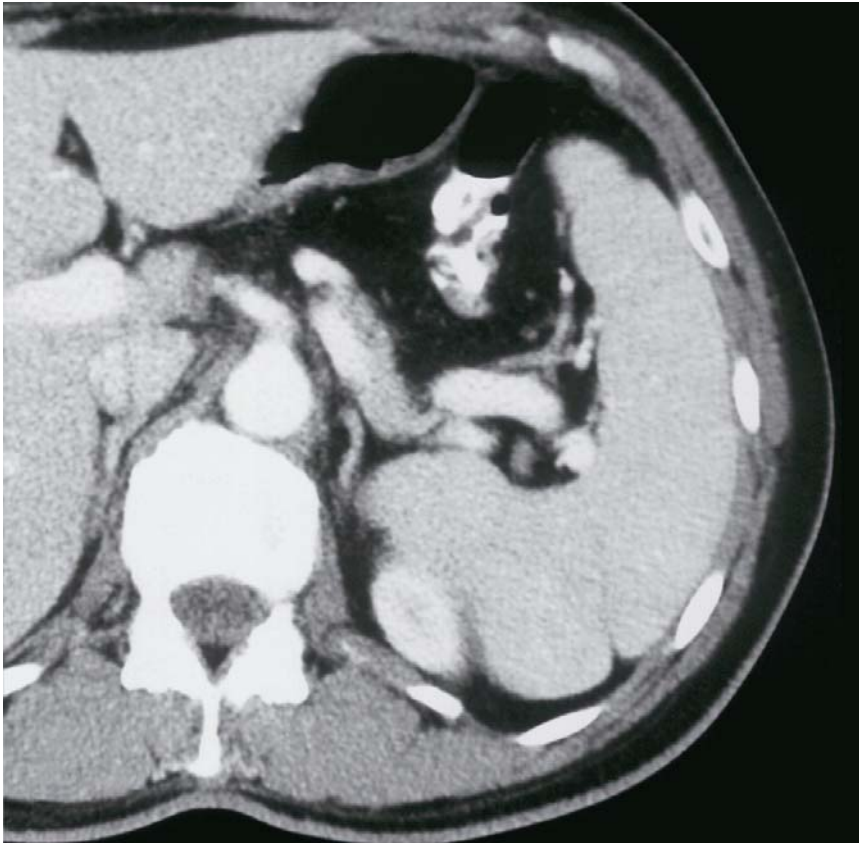
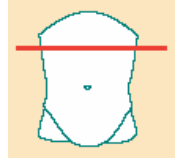
Lép, axialis CT felvétel / 2.



1. Lobus hepatis sinister
2. Gaster
3. Costa
4. V. portae
5. Hepar, lobus caudatus
6. A. lienalis
7. Flexura coli sin.
8. V. cava inf.

9. Aorta
10. Hilus lienis (facies visceralis)
11. Lobus hepatis dexter
12. Gl. suprarenalis dext.
13. Diaphragma, crus dext.
14. Vertebra
15. Lien, facies diaphragmatica

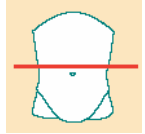
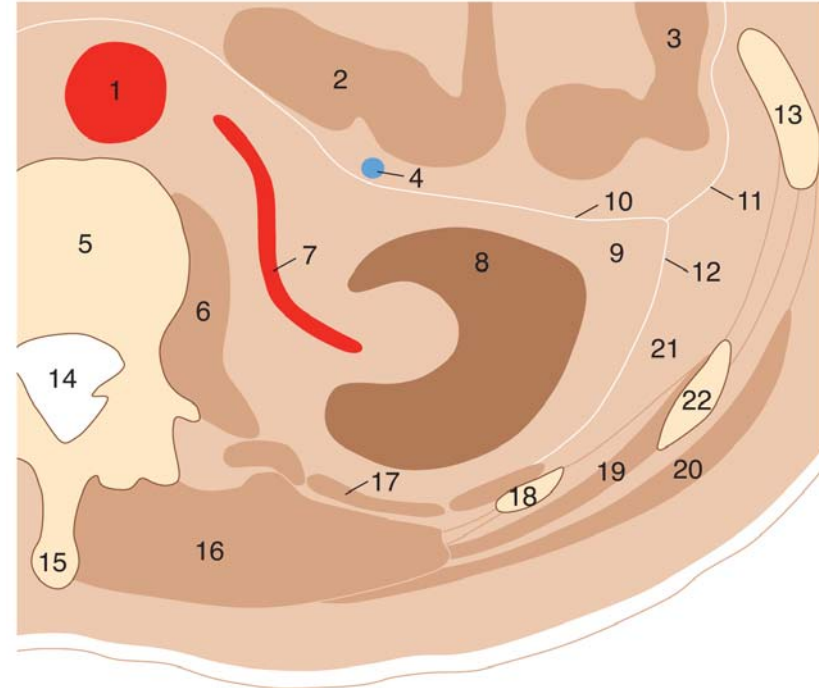
Lép, axialis CT felvétel / 3.



1. Lobus hepatis sinister
2. Gaster
3. Lien, facies colica
4. V. portae
5. Truncus coeliacus
6. A. lienalis
7. V. cava inf.
8. Aorta

9. V. lienalis
10. Cauda pancreatis
11. Gl. suprarenalis dext.
12. Diaphragma, crus dext.
13. Vertebra
14. Gl. suprarenalis sin.
15. Lien, facies renalis

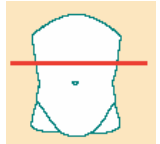
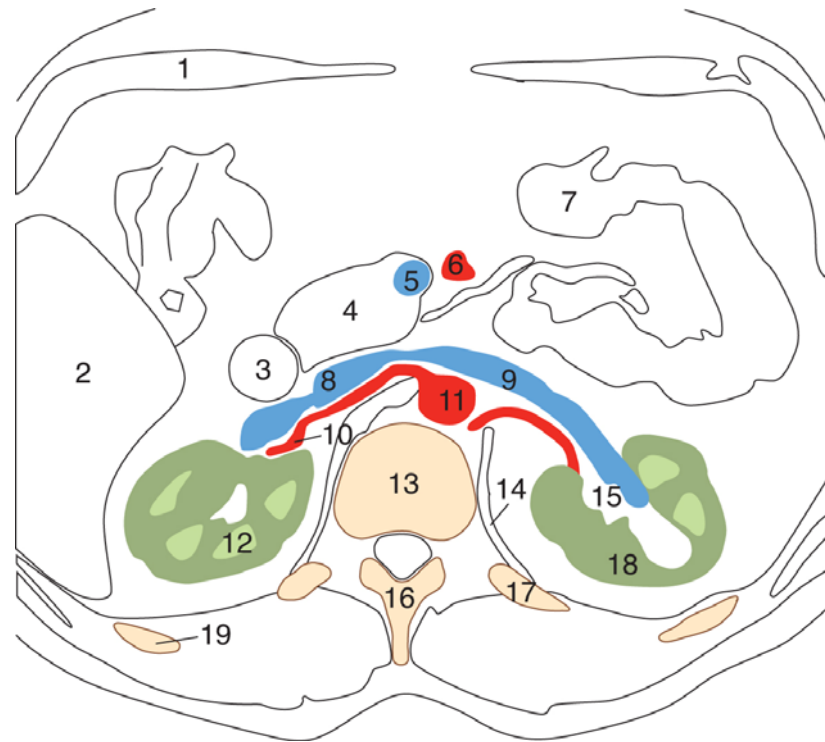
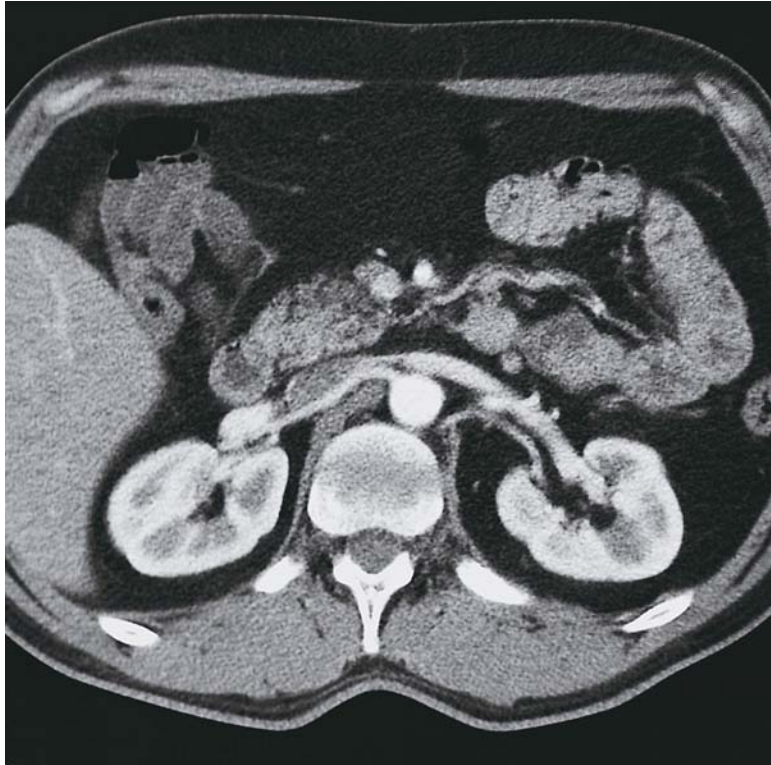
Capsulae renis, axialis CT felvétel



1. Aorta
2. Jejunum
3. Colon descendens
4. V. mesenterica inf.
5. Vertebra lumb. II.
6. M. psoas major
7. A. renalis
8. Ren
9. Capsula adiposa (elülső perirenalis zsírtest)
10. Lamina ant. fasciae renalis (Gerota fascia)
11. Fascia lateroconalis

12. Lamina post. fasciae renalis (Zuckermandl fascia)
13. Costa X.
14. Canalis vertebralis
15. Processus spinosus
16. M. erector spinae
17. M. quadratus lumborum
18. Costa XII.
19. M. serratus post. inf.
20. M. latissimus dorsi
21. Hátsó pararenalis zsírtest
22. Costa XI.

A vese erei, axialis CT felvétel



1. Arcus costae
2. Hepar
3. Duodenum, pars descendens
4. Pancreas, proc. uncinatus
5. V. mesent. sup.
6. A. mesent. sup.
7. Vékonybél
8. V. cava inf.
9. V. renalis
10. A. renalis

11. Aorta
12. Medulla renis
13. Corpus vertebrae lumb. I
14. Diaphragma, pars lumbalis
15. Sinus renalis
16. Proc. spinosus
17. Costa XII.
18. Cortex renalis
19. Costa XI.