

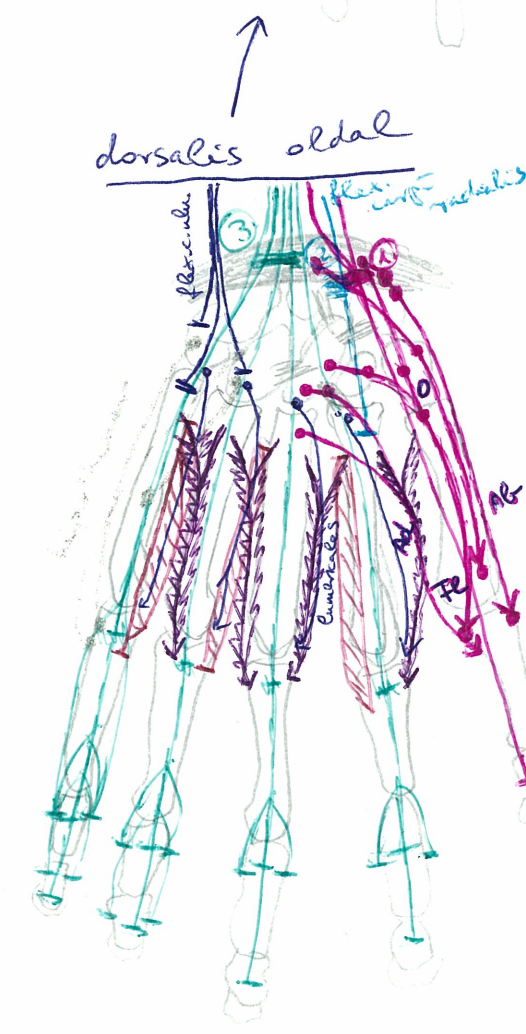
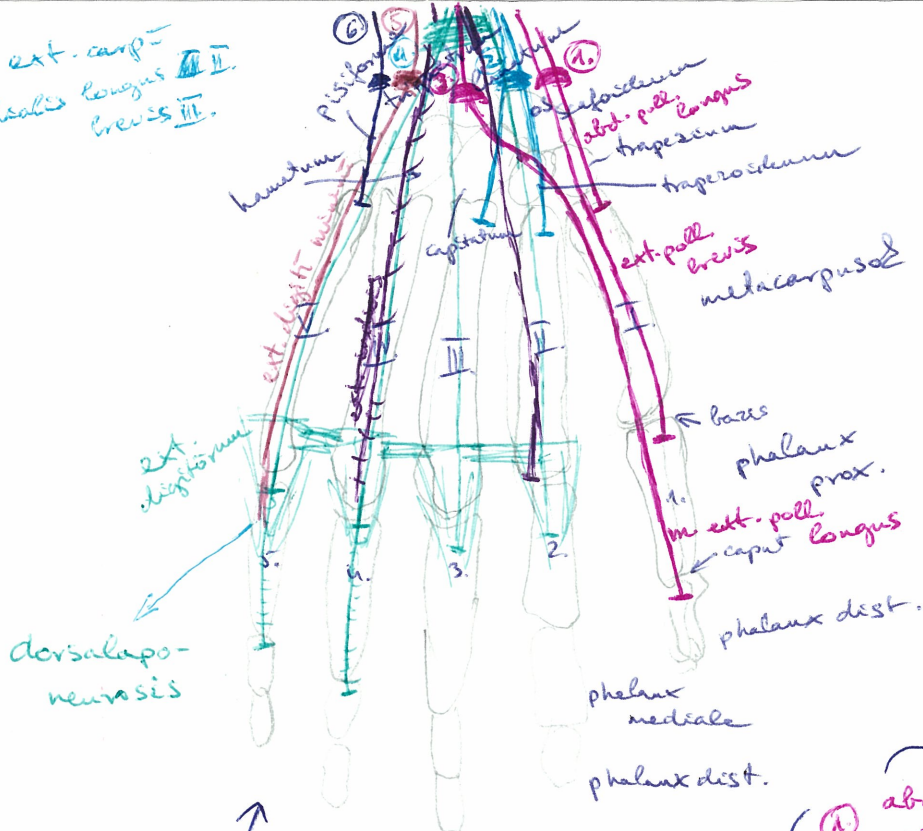
Fasciculus posterior

Fasciculus medialis

Fasciculus lateralis

n. axillaris	n. radialis	n. cutaneus brachii m.	n. cut. antibrachii med.	n. ulnaris	n. medianus	n. musculocutaneus	
<p>motorosau: m. deltoideus, m. teres minor</p> <p>Erösa: vállcsukát</p> <p>n. cutaneus brachii lateralis superior</p> <p>Éar oldalsó bõre</p>	<p>motorosau: õmes falkai, alkar extensor</p> <p>Erösa: Éar is alkar bõr dors. old., Éirket rad. felõt (bõr)</p> <p>aigan: n. cut. brachii lat. inferior, Éar külsõ bõre, n. cut. antibrachii posterior, alkar dors. old. bõre, n. cut. brachii posterior, Éar hõtsõ felõia bõre</p> <p>ramus profundus alkar ext. izmõk</p> <p>ramus superficialis orõk Erõk</p>	<p>Erösa: felkar medialis bõre</p> <p>ramus anterior</p> <p>ramus posterior</p> <p>alkar ulnaris r. n. is dorsalis oldalon</p>	<p>ramus superficialis</p> <p>ramus profundus</p> <p>ramus dorsalis</p> <p>motorosau: m. flexor carpi ulnaris, m. flex. digitorum prof. uln. r.</p> <p>Erõk</p> <p>motorosau: nagy tenyõri izmõk (Éiv. 2,5 amit a n. medianus)</p> <p>ulnarisau 3 ujjfel volarisau, dorsalisau 5 ujjfel ulnar felõl a phalanx med. Éõrepeõk</p>	<p>motorosau: m. abductor poll. cruris, m. flex. poll. cruris, m. opponens poll., 1/2 lumbricales</p> <p>ramus palmaris</p> <p>motorosau: m. abductor poll. cruris, m. flex. poll. cruris, m. opponens poll., 1/2 lumbricales</p> <p>motorosau: nagy tenyõri izmõk (Éiv. 2,5 amit a n. medianus)</p> <p>nervus digitales dorsales</p> <p>dorsalisau 5 ujjfel bõre ulnar felõl, a phalanx med. Éõrepeõk</p>	<p>motorosau: alkar flexorõk (Éiv. amit n. ulnaris)</p> <p>ramus palmaris</p> <p>motorosau: m. abductor poll. cruris, m. flex. poll. cruris, m. opponens poll., 1/2 lumbricales</p> <p>nervus digitales communis</p> <p>nervus digitales proprii</p> <p>Erösa: Fõb ujjfel palmarisau, radialis felõl, atnyõl</p> <p>5db ujjfel phalanx dist. dors. radialis felõl</p>	<p>motorosau: felkar flexorõk</p> <p>n. cutaneus antibrachii lateralis</p> <p>alkar lateralis bõre</p>	
		<p>palmaris</p>		<p>dorsalis</p>			

m. ext. carp. radialis longus II.
brevis III.



Ventralis oldal

lumbricales → flex. digit. prof. in rad. dd. I-V. → dorsalaponeurosis II-V. (metacarpophalangealis interdigitalis)

interossei palmar. → II-IV-V. metacarp. → II-IV-V. dorsalaponeurosis

interossei dors. → II-V. metacarp. → I-III-IV. dorsalaponeurosis
 eponus feli visus obliqua

Ab abd. poll. brevis os scaphoideum → os sesamoideum
 FL flex. poll. brevis os trapezium → — u —
 O opponens poll. os trapezium → I. metacarpus
 Ad adductor poll. os capitatium → os sesamoideum
 III. metacarpus

Enthivezések

- | | | |
|----|------------------------|---|
| 1. | abductor poll. longus | → I. metacarpus |
| | ext. poll. brevis | → phalanx dist. prox. |
| 2. | ext. carp. rad. longus | → II. metacarpus |
| | brevis | → III. metacarpus |
| 3. | ext. poll. longus | → phalanx dist. |
| 4. | ext. digitorum | → dorsalaponeurosis II-V. (phalanx prox.) |
| | ext. indicis | → II. dors. aponeur. |
| 5. | ext. digiti minimi | → V. — u — |
| 6. | ext. carp. ulnaris | → V. metacarpus |

Enthivezések

- | | | |
|----|-------------------------|--------------------|
| 1. | flex. poll. longus | → phalanx dist. |
| 2. | flex. carp. radialis | → II. metacarpus |
| 3. | flex. digitorum superf. | → phalanx medialis |
| | prof. | → phalanx dist. |

flex. carp. ulnaris → os pisiforme hamatum V. metacarpus

Ízületek

① art. humerale

- art. sphenica → cavitas glenoidalis + labrum caput humeri
lesztok - válltálatl picaum
tuberculum supraglenoidale

• mozgásai:

sqg.	abd. add.	90° fuggóig	180° ha scapula elfordul
horizont.	ante retro	60° 5°	>90° ha clavicle elford.
long.	rotatio	90°	360° úrmintesen abd. karnál

- szalagok: lig. coracoclaviculare (art. acromioclav. társój.)
↳ lig. coracoideum
lig. trapeziuum

lig. coracohumerale
↳ többel émenő

lig. coracoacromiale
↳ abd. fő gátlój!

+ circumductio

② art. cubiti

- art. humero-ulnaris ¹ synchondros
- art. humero-radialis ² nebad
- art. radioulnaris prox. ³ trochoid

trochoginglymus

- Eozsintézés fog.:
- caput humeri ¹ flex. 140°
ext. 180°
- capitulum humeri ² pron. 140°
sup. 30° hum. mal
- caput radii ³ 360° teljes rőtő
- proc. styli ulnari

trochlea humeri + capitulum hum. = condylus humeri

incisura trochlearis fovea capitis

olecranon - fossa olecrani

proc. coronoideus - fossa coronoidea

capitulum radii - fossa radialis

- szalagok: lig. coll. ulnare
lig. coll. radiale
lig. anulare radii

③ art. radiocarpae

- fogás
- fovea art. radii - discus articularis scaph. + lun. + triquetrum

- szalagok: lig. ulnocarpum palmar
lig. radiocarpum - palmar.
dors.

- mozg.: dorsod. fog. 40° (ulnar fele mozg.)
radiouln. fog. 160-170°


④ art. intercarpae

- fovea
- ligg. intercarpalia dorsalia

⑤ art. carpometacarpeae II-V.

- fovea
- ligos is felmívelt
- ligg. carpometacarpeae
- ligg. metacarpalia

⑥ art. metacarpophalangeae II-V.

- Éreltálatl nebad
-  elölal ágott
gősub felvő

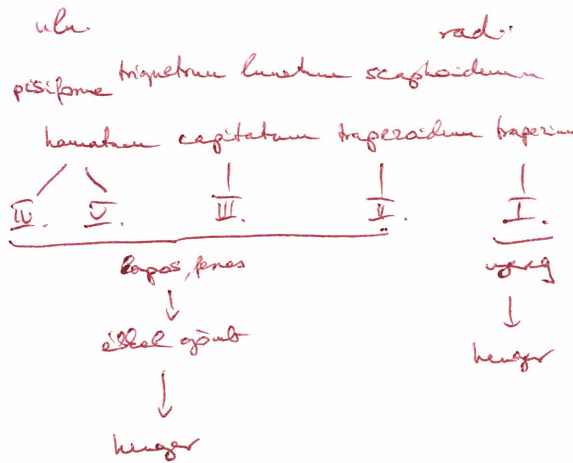
⑦ art. interphalangeae

+
art. carpometacarp.
art. metacarpophalangeae
pollicis

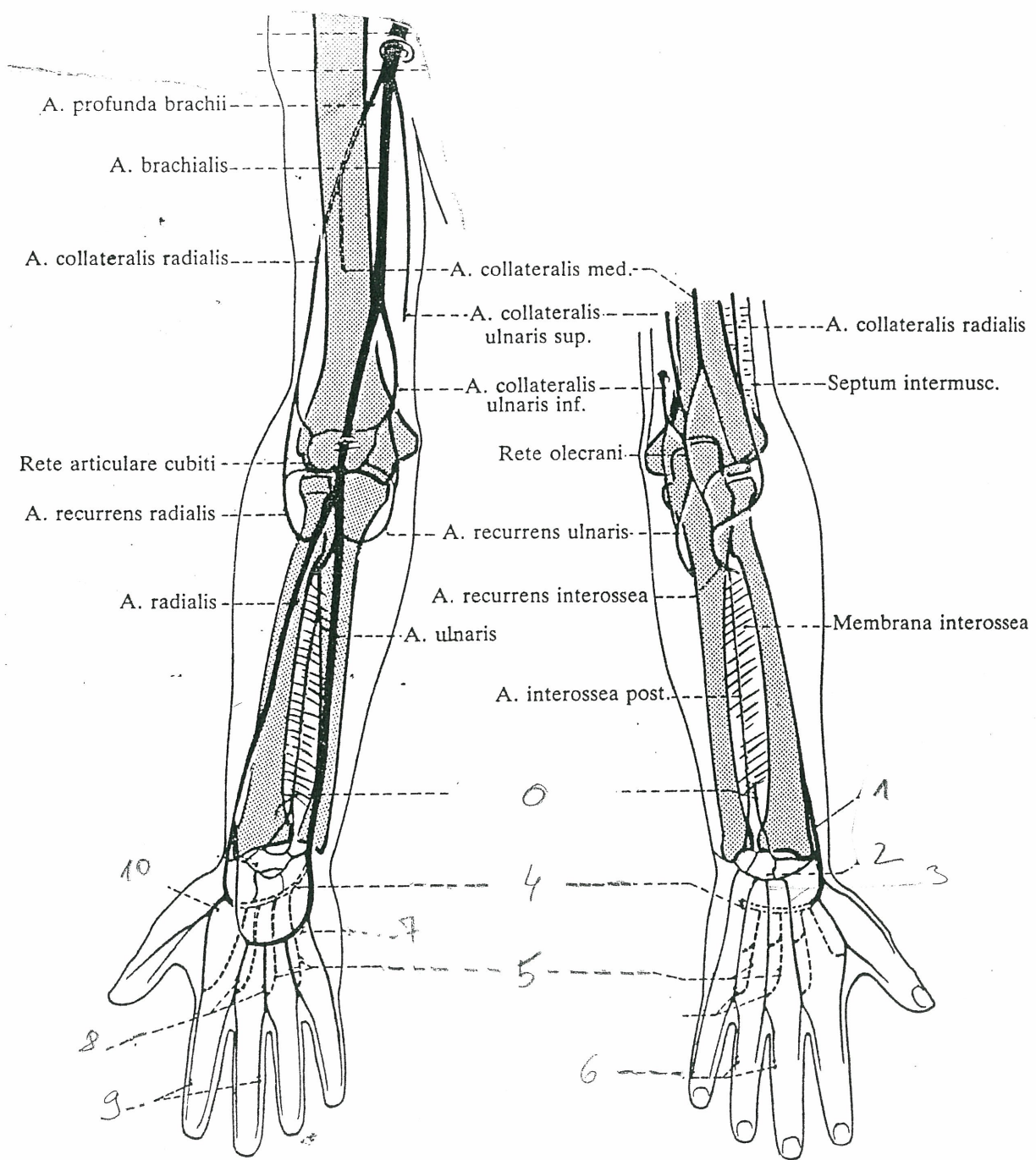
- kengy felmívelt, dorsod.
- lig. coll. ¹ nebad
- ginglymus
- fovea coll. ² nebad
- volaris rostporcos ³ nebad
- nebad

⑧ art. carpometacarpalia pollicis

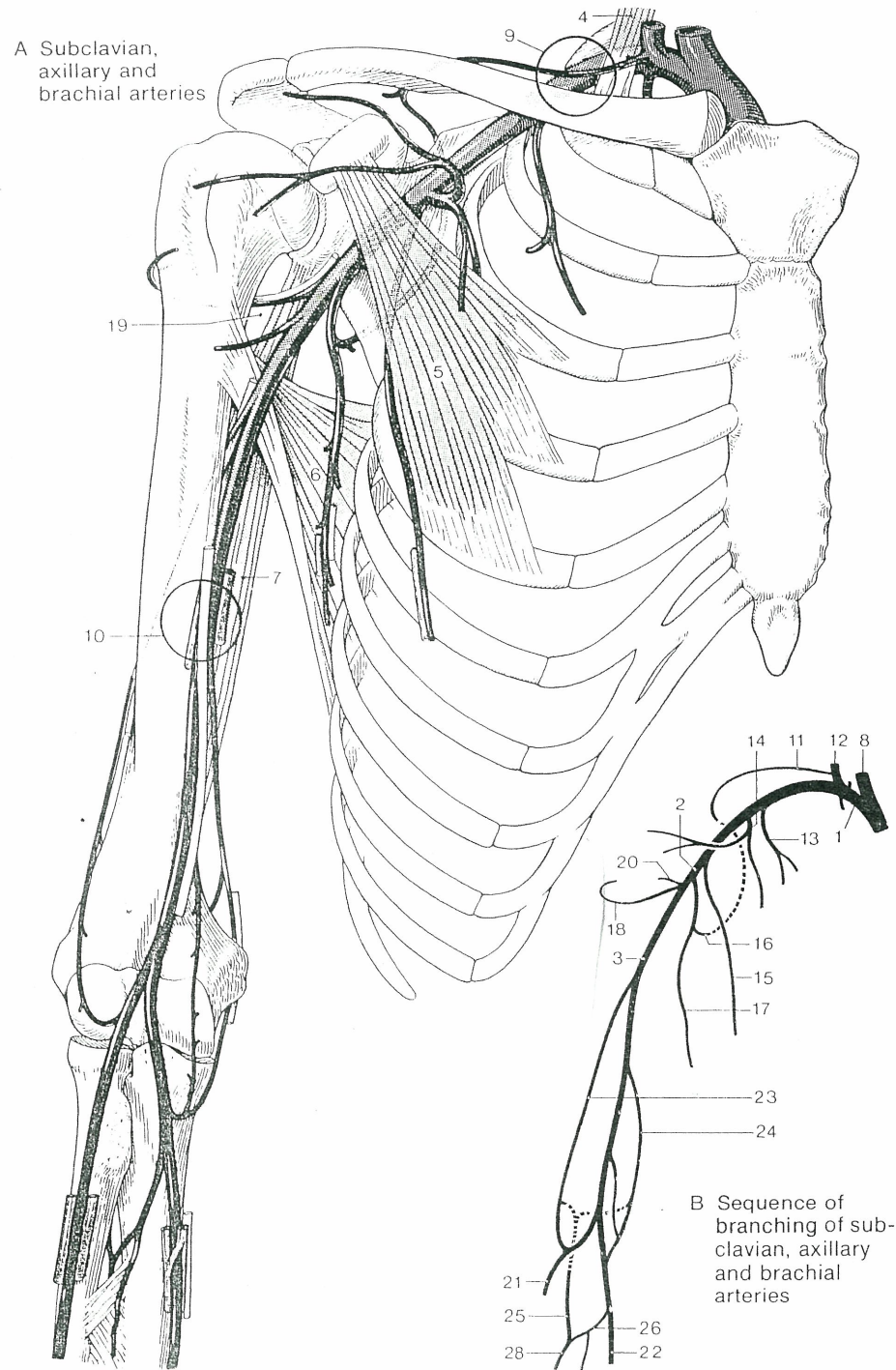
- ugróg
- os trapezium - I basis



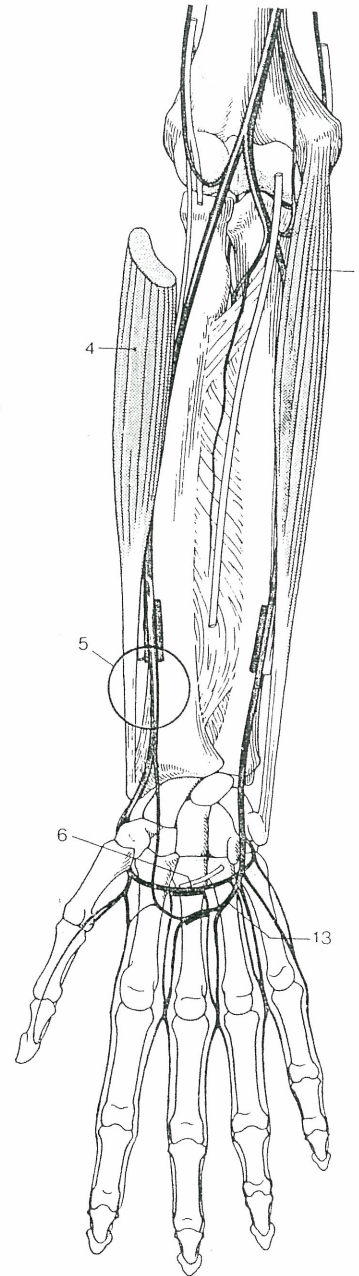
- flex. - est.
- abd. - add.



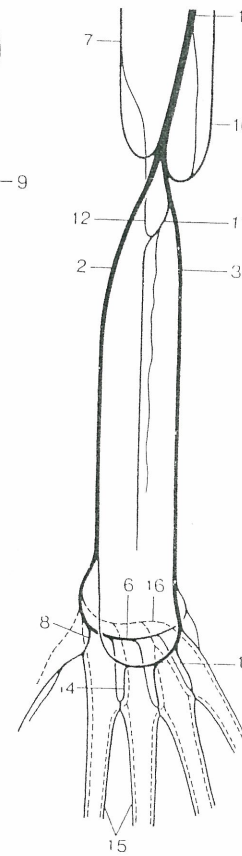
A Subclavian, axillary and brachial arteries



A Arteries of forearm (flexor aspect)



B Sequence of branching of antebrachial arteries



C Arteries of dorsum of hand

